

People's Postcode Lottery Annual Report 2022



Proud to have raised over £1 billion for charities and good causes since 2005.

COVER: The December Postcode Millions saw over 700 players in Goring-by-Sea win a share of our largest ever prize — an amazing £16.9 million.

Contents Page from top to bottom: 1. In May, 435 residents in Rhymney, South Wales, scooped a share of a £3.7 million Postcode Millions prize. One in ten people in the town were winners! 2. On a high in the Hebrides! We travel the length and breadth of Britain to surprise lucky winners with golden envelopes and cheques. 3. In June, 19 neighbours in Orrell, Greater Manchester, celebrated a £630,000 windfall between them — making People's Postcode Lottery history with our largest ever Street Prize.



Contents

- 2 Managing Directors’ welcome
- 4 Postcode Lottery Group
- 5 How it works
- 6 Nearly two decades of impact
- 9 2022 at a glance
- 10 Much more than a knock at the door
- 17 Lifting the cap on our fundraising
- 18 Celebrating on Britain's streets
- 22 Ambassadors
- 24 Our team
- 27 Doing business sustainably
- 30 Financial reporting
- 40 Governance

Our players raise funds for charities including the Ellen MacArthur Cancer Trust, which helps young people rebuild their confidence after cancer.

“Receiving funding from People’s Postcode Lottery has been a gamechanger in enabling us to reach and have a positive impact on the lives of many hundreds of young people over the past decade.”

Dame Ellen MacArthur, founder of the Ellen MacArthur Cancer Trust

Managing Directors' welcome



Clara Govier,
Managing Director



Lorna Menzies,
Managing Director



Rob Letham,
Managing Director

On Wednesday 1 November 2022, we officially hit a major milestone in our history – a massive £1 billion in total raised for good causes since 2005.

The journey had taken us 17 years. Our entire team celebrated, of course, and we shared the incredible news with our 4.2 million players, our trustees and the 13,000 charities and good causes we support.

This was a proud achievement for everyone connected to People's Postcode Lottery. A landmark moment was reached thanks to the daily hard work, passion, commitment and innovation of our talented team, the partnerships and networks built around our funded charities ... and of course, the enthusiasm and loyalty of millions of players around Britain.

Then, just weeks later, our year ended on a high as we celebrated our largest-ever prize of £16.9 million with the help of our new ambassador Jason Donovan.

What a leap from reaching our first £1 million raised in 2008 to hitting the £1 billion mark in 2022. The impact has been undeniable. As this report shows our uniquely unrestricted, flexible funding model and our partnership approach are transforming lives and creating lasting impact across Britain and around the world, every day.

But we always want to do more. We will continue to evolve and challenge ourselves to grow. We aim to deliver the next £1 billion target quicker, for the benefit of people, communities and the planet.

“What a leap from reaching our first £1 million raised in 2008 to hitting the £1 billion mark in 2022. The impact has been undeniable.”

With society facing multiple challenges including the spiralling cost of living, ongoing global conflict and the twin climate and biodiversity crises, it is imperative that we do much, much more to support the efforts of charities and good causes. To that end, we are on a mission to futureproof charity lottery fundraising.

In the autumn of 2022, we stepped up our campaign for a significant overhaul of UK charity lottery legislation. Following the long-awaited 2020 reforms, which saw annual sales limit increase to £50 million, we are now calling for the removal of annual sales limits for charity lotteries.

After all, charity lotteries such as ours are the only type of charity fundraising to face this restriction. Removing the cap will supercharge funding for good causes large and small, at no cost to the public purse.

As well as overwhelming third sector backing, there is huge cross-party support for the removal of the red tape. So in the coming year, we will aim for a rapid outcome, because we know the restricted limit is impacting on people's lives.

Looking to the future, we can promise two things - we will work hard, and we will work together for positive change.



Celebrating our £1 billion milestone was a proud achievement for the team.

2022 Postcode Hero

Our 2022 Postcode Hero is Gareth Thomas, former Welsh international rugby star turned HIV campaigner. He was the first openly gay professional rugby player and has worked tirelessly to end the stigma around HIV. During the annual Charity Gala in May, Gareth accepted £250,000 on behalf of Terrence Higgins Trust, the UK's leading HIV and sexual health charity.



This year's highlights



Postcode Lottery Group

The first Postcode Lottery launched in 1989 in the Netherlands, created by Novamedia/Postcode Lottery Group with an ambitious mission: to help build a fairer, greener world by raising funds for charities and good causes.

At the heart of the Postcode Lottery format is the unique concept of neighbours playing and winning together, while charities and good causes win too.

There are now Postcode Lotteries in five countries: the Netherlands, Sweden, Great Britain, Germany and Norway, with over 13.9 million subscriptions in total. Together, these players have raised €12.6 billion for charities around the globe. Novamedia/Postcode Lottery Group is one of the world’s largest private charity donors.

A record total of €854 million for charities

For over three decades, the Postcode Lotteries have played a leading role in creating a fairer, more equal and environmentally sustainable world.

We do this with the continued support of millions of loyal players in five countries. Together we are making a long-lasting positive social impact, transforming people’s lives, and improving neighbourhoods and communities everywhere.

Our purpose is stronger than ever. A record total of €854 million was raised for charities in 2022 by our players in the Netherlands, Sweden, Great Britain, Germany and Norway. This means €2.3 million was raised every single day last year.

We are guided by people and a shared mission. Every day we meet exceptional people and charities with ideals, goals and dreams. These charities, and civil society as a whole, are a force for transformation, a force for good in what is currently a world full of immense problems for so many people and our planet.

By fully embracing our entrepreneurial and innovative spirit, we can continue to build on our strengths, raise even more funding for charities and make many more Postcode Lottery winners.



Imme Rog, CMO, Michiel Verboven, COO, and Sigrid van Aken, CEO
Executive Board, Postcode Lottery Group.

How it works

People’s Postcode Lottery is a subscription lottery and has guaranteed winners every day. Anyone aged over 18 in England, Scotland and Wales can sign up and play with their postcode, alongside their neighbours.

Every month there are 20 draws, and winning postcodes are announced every day of the month.

A minimum of 33% of the ticket price goes to charity, so our players know they are helping to transform lives and shape a better world every day.

Funds raised are awarded to charities and good causes by one of 20 independent, grant-giving Postcode Trusts. The funding is usually long-term, unrestricted and flexible, reflecting a relationship based on trust and a partnership approach.



Neighbours in Stanmore, North London, were thrilled to bag a Street Prize in January, with police dispatcher Tak-Kwong Liu (centre) scooping £60,000 with two tickets.

“You see the adverts on TV ... you want to believe it. You wait for the day and today’s the day. It’s nice to win on your own, but it’s nicer to win with your neighbours. I love this community and I love my neighbours here, we’re very close.”

Depaul UK supports young people experiencing homelessness, or at risk of it. It also works to prevent homelessness by giving young people tools for the future.

“This is our tenth year of being supported by players of People’s Postcode Lottery, and every day their support continues to change the lives of young people affected by homelessness. So again, on behalf of everyone at Depaul UK, we take this opportunity to say thank you!”

Sarah Williams, Director of Philanthropy and Partnerships at Depaul UK

A photograph of two young women sitting at a wooden table. They are both smiling and looking at each other. One woman is holding a white mug, and the other is holding a patterned mug.

Where our players’ money goes

The income from each ticket is used as follows:



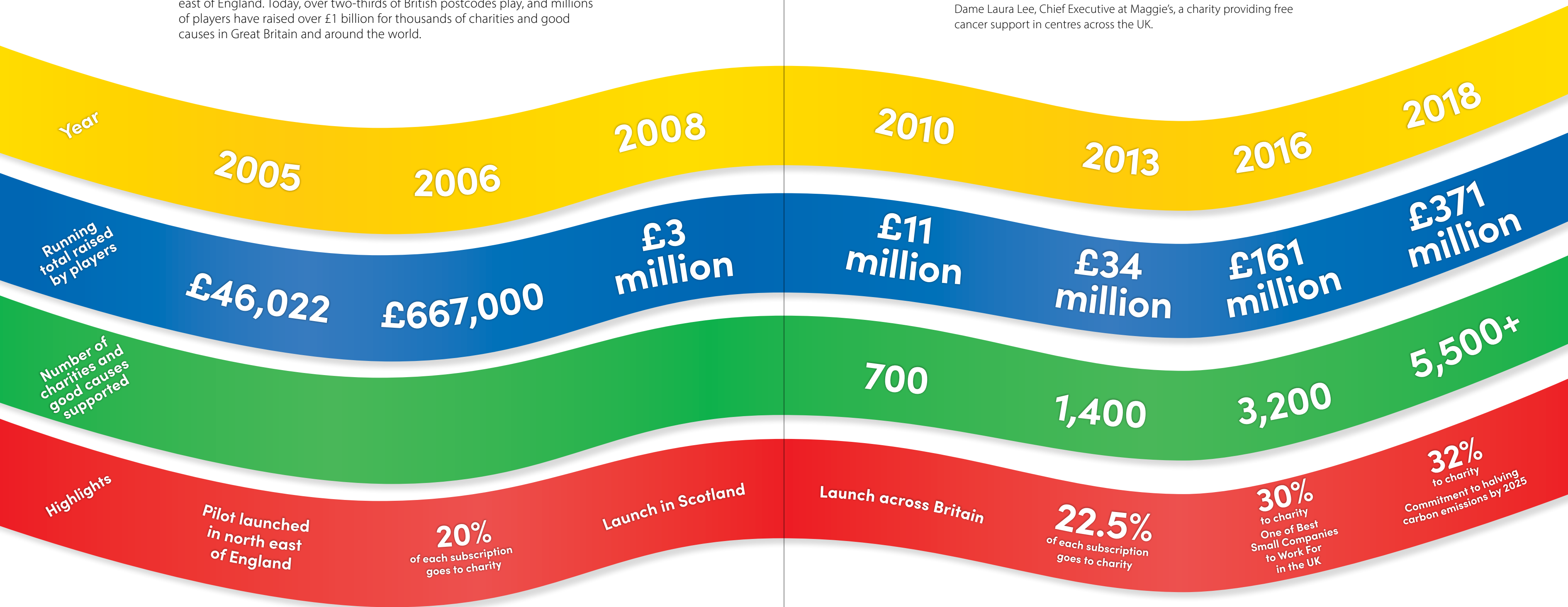
***13% more than the legally
required minimum**

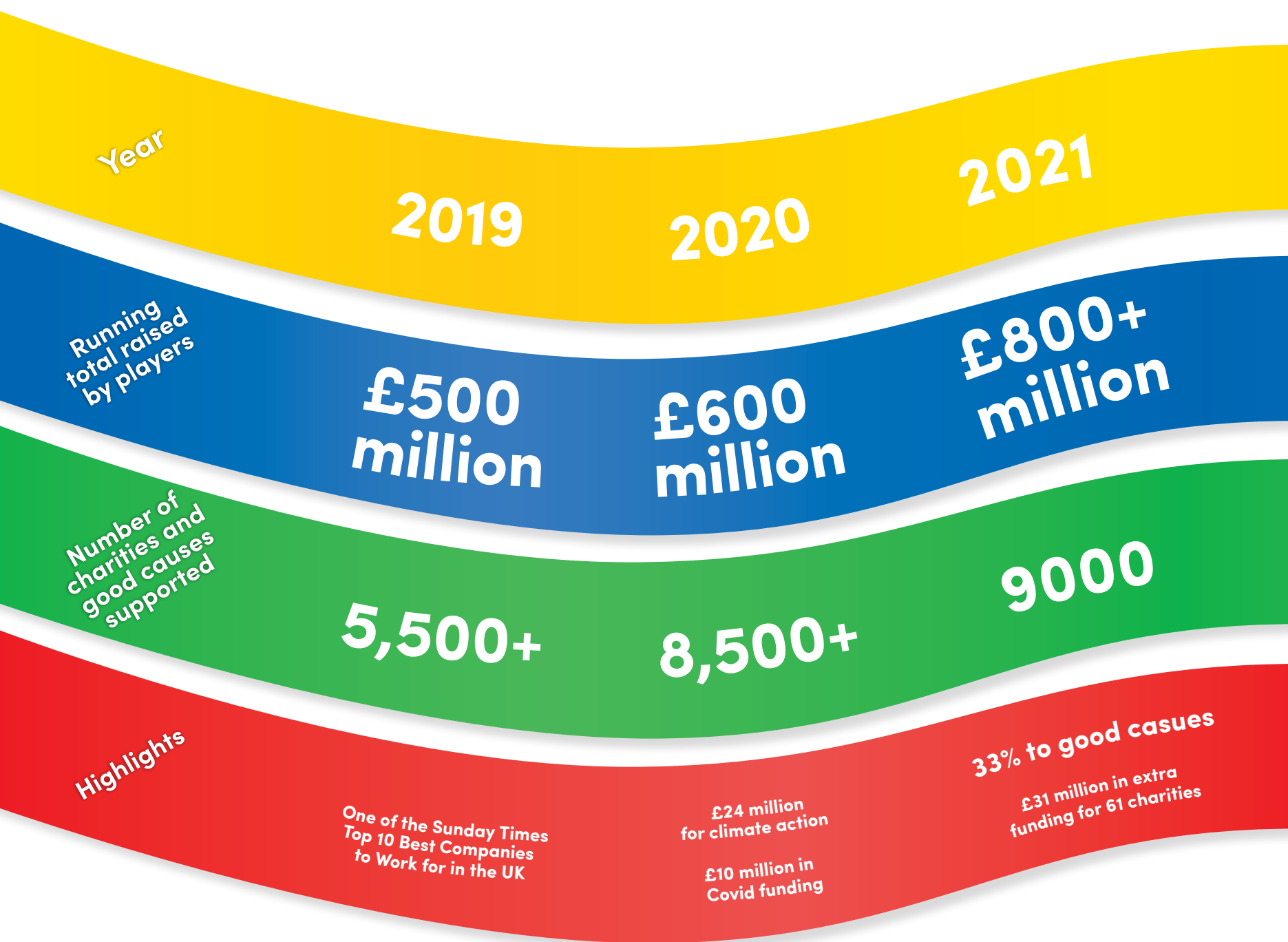
Nearly two decades of impact

People's Postcode Lottery began in 2005 as a small pilot project in the north-east of England. Today, over two-thirds of British postcodes play, and millions of players have raised over £1 billion for thousands of charities and good causes in Great Britain and around the world.

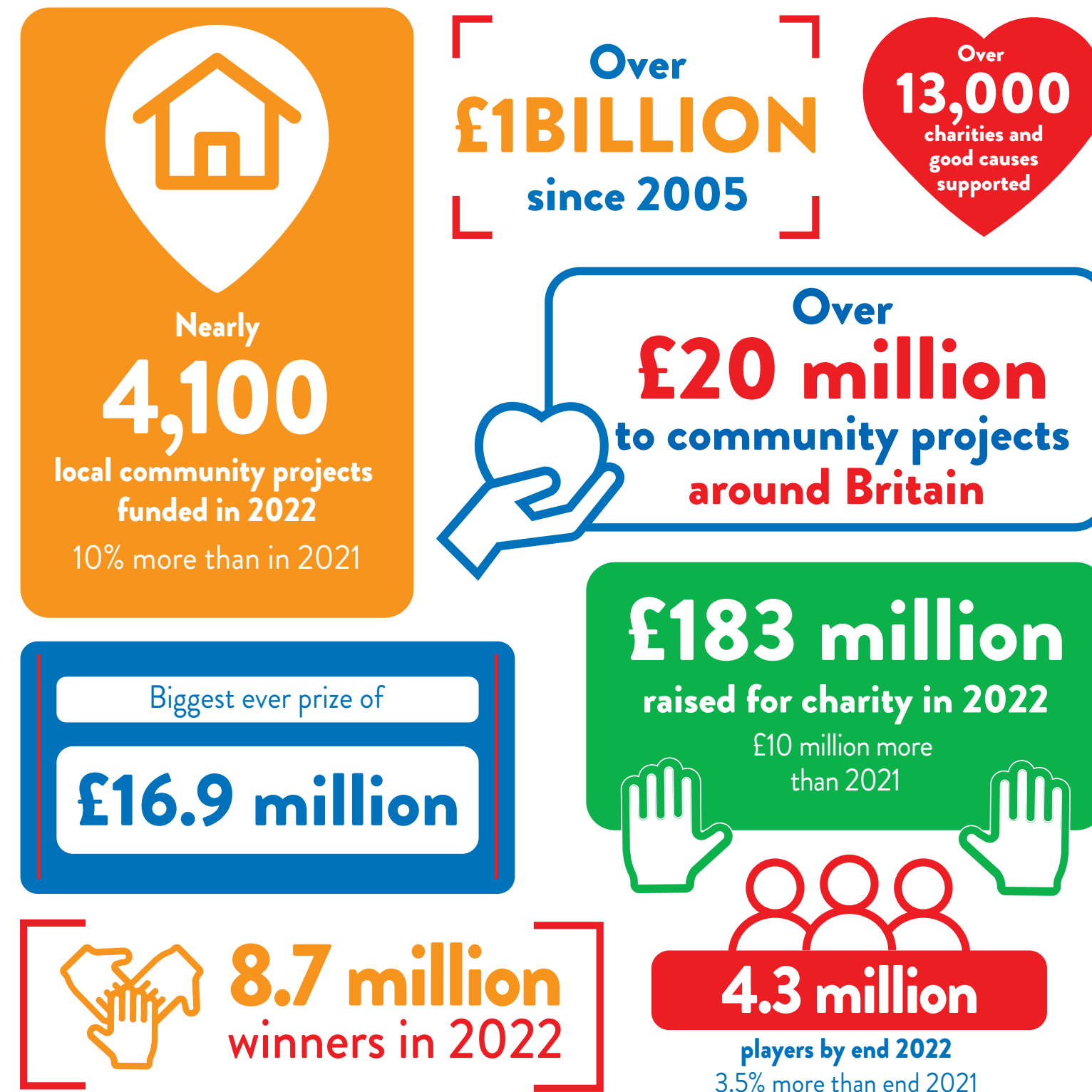
"Your players have raised over £1 billion, that is just amazing. You said you were committed to supporting charities with unrestricted revenues, supporting charities to share and learn from each other. You've kept those promises and done that in abundance."

Dame Laura Lee, Chief Executive at Maggie's, a charity providing free cancer support in centres across the UK.





2022 at a glance



Much more than a knock at the door



Dad of one Rowan cares for his mother who has Parkinson's. Carefree provides vital breaks for unpaid carers like him.



Charlotte, who lives with autism, mild cerebral palsy and bipolar disorder, was scared of the ocean until her mum signed her up for surf therapy lessons. She is now a competitive para-surfer.

Thanks to People’s Postcode Lottery players, a massive £183 million was raised for charities in 2022 – £10 million more than in 2021.

From a local project providing peer support for children with Down’s Syndrome and their families, to a major global initiative helping women in conflict zones rebuild their lives, the funds raised by players of People’s Postcode Lottery are transforming lives and creating lasting impact around the world, every day.

Over £20 million was awarded to more than 4,000 community projects around Britain – an increase of 10% from 2021. This local funding is proving vital in supporting people and communities in postcodes across the country.

Giving carers room to relax

Carefree is using empty hotel rooms to provide much-needed short breaks for unpaid carers. Its ground-breaking platform allows hotels to donate unsold bed nights to carers, just like Rowan, who could do with a breather. Thousands of carers have already self-referred to enjoy free short breaks.

A combination of grant and loan funding awarded from Postcode Innovation Trust.

The sea and me

Marine Conservation Society explores the deeply personal connection volunteers like Charlotte have with the sea. With the help of funding raised by our players, it is fighting for a better protected, healthier ocean that we can all enjoy.

Funds awarded from Postcode Planet Trust.

Boost for music making

More children and young people have opportunities to learn and earn in the music industry after national charity Youth Music launched its Recharge Fund to support around 40 projects across the country.

Funds awarded from Postcode Culture Trust.

Bison are back in Britain

In July, three female bison were released at Wilder Blean near Canterbury, Kent, with a bull arriving in December. The reintroduction, part of a rewilding project by Kent Wildlife Trust and the Wildwood Trust, will see these natural ecosystem engineers shape a more diverse woodland habitat and manage the landscape in a more natural way. The surprise birth of a calf in the autumn bodes well for the new herd!

Dream Fund awarded from Postcode Innovation Trust.

Rebuilding lives after conflict

Women for Women International’s Stronger Women, Stronger Nations programme helps women across eight post-conflict countries understand their own rights, earn an income and connect with each other. Thanks to player funding, the programme is reaching thousands of marginalised women in countries including Afghanistan, Iraq, Nigeria, Rwanda, South Sudan and the Democratic Republic of Congo.

Funds awarded from Postcode Justice Trust.



Jack Drum Arts in County Durham is benefiting from Youth Music’s Recharge Fund. Image: Scenicview Gallery & Studio.



In September, Wilder Blean welcomed an unexpected arrival – the first wild bison calf to be born in Britain since the Ice Age.



Support from Women for Women International has empowered these members of the Isangano farming co-operative in Rwanda to earn an income. Image: Serrah Galos.

Rare new arrival

Maya is one of three snow leopard cubs born at the Royal Zoological Society of Scotland (RZSS) Highland Wildlife Park. Her name, that of Buddha’s mother, was chosen by players of People’s Postcode Lottery. Player support allows RZSS to help conserve vulnerable species like the snow leopard.

Funds awarded from Postcode Planet Trust.



Maya was born at the RZSS Highland Wildlife Park in early summer 2022.

Derelict viaduct becomes a greenspace

In summer 2022, Manchester’s Grade II-listed Castlefield Viaduct, abandoned since 1969, was transformed into a brand new ‘sky park’ offering a green haven for the city’s residents. The project, led by the National Trust along with local partners, saw more than 3,000 plants, shrubs and trees planted in just five months.

Funds awarded from Postcode Earth Trust.



Manchester’s previously derelict Castlefield Viaduct has been given a new lease of life and transformed into an urban park. Image: National Trust Images/Annapurna Mellor.

Taking action on plastic

Every year, around 14 million pieces of plastic rubbish end up in and around Britain’s canals and rivers. Canal and River Trust’s Plastics Challenge encourages people to get involved with litter picking around their local waterway.

Funds awarded as part of the Postcode Climate Challenge.



Small actions can make a big difference. Canal and River Trust is encouraging people to fight back against plastic becoming part of our nature.

Six-year-old Alfie has a new best friend in his buddy dog Cooper, provided by Guide Dogs UK. Alfie’s sight condition, septo-optic nerve hypoplasia, means he can find it difficult to settle, but his family has noticed a real improvement since Cooper arrived. Thanks to player funding awarded from Postcode Animal Trust, Guide Dogs is helping to boost the wellbeing of up to 150 sight-impaired children with a buddy dog.

“Alfie is calmer ... it’s had a real impact on the whole family.” Alfie’s mum Tamara

Maggie’s in West London has been a lifeline for Alice, who went into early menopause following breast cancer treatment. In 2022, players raised £3 million for Maggie’s.

“The menopause was almost as hard as the cancer. There was no end in sight – I wanted to be out of my body. I had a mastectomy, and my ovaries and ovarian tubes removed. People say things like, ‘Oh, that’s such a shame, you’re so young.’ They were trying to be kind, but it does make you consider your circumstance more. Not having a partner or a job, no longer the choice to have children made me feel unmoored. But I could talk to people in Maggie’s about this. Realise that life itself is the gift.”

Funds awarded from Postcode Care Trust.

Scientists voyaged to the Antarctic Peninsula with Greenpeace. Here they carried out ground-breaking research on the effects of climate change on remote penguin colonies, many of which have never before been surveyed.

Funds awarded from Postcode Earth Trust.



Alfie has a new best friend in his buddy dog Cooper.



Maggie’s in West London has been a lifeline for Alice.



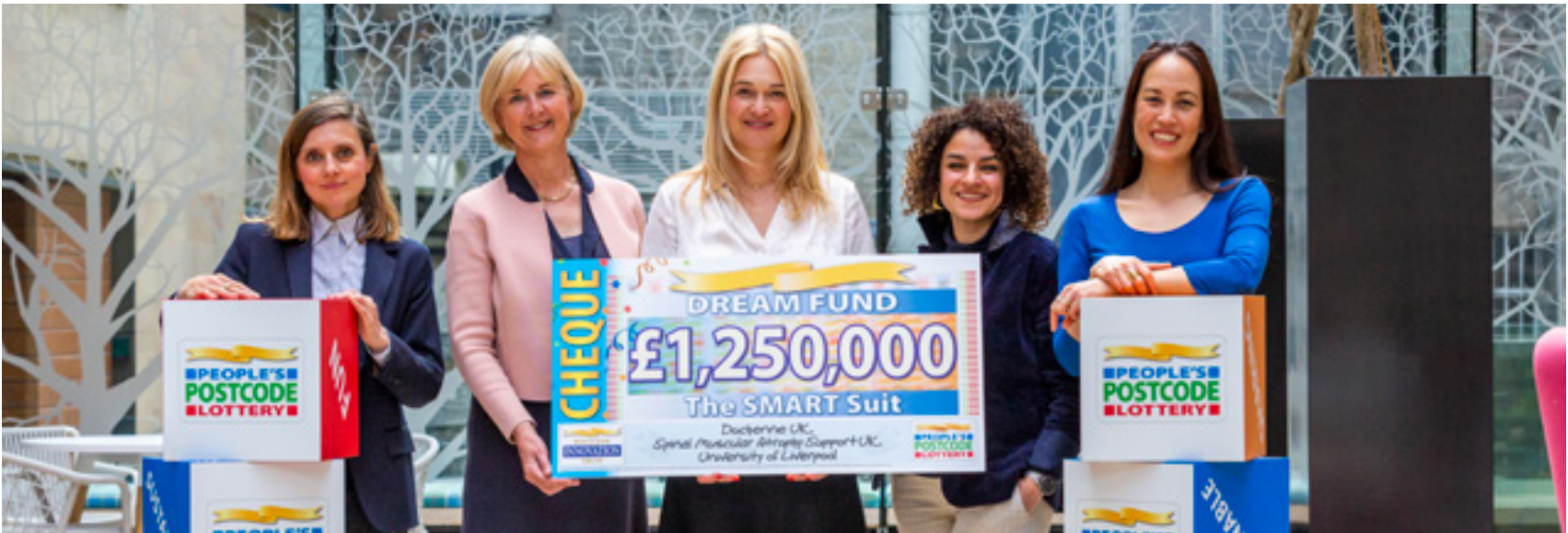
Scientists in the Antarctic Peninsula. Image: Tomás Munita/Greenpeace.

A £400,000 grant to landmine clearance charity The Halo Trust means men and women across northwest Syria are making their communities safe again by clearing landmines and explosives. Funds awarded from Postcode Global Trust.



What dreams are made of

Three pioneering collaborative initiatives shared this year’s £3.75 million Dream Fund, as the Fund celebrated in its tenth funding round since its launch in 2011. The three winners each received £1.25 million to make their dream project a reality.



Dream Fund winners Duchenne UK and partners will be developing the SMART suit, restoring arm function for people living with progressive muscular dystrophy conditions.

The SMART Suit will use cutting-edge technology to restore arm function for young people with Duchenne muscular dystrophy. It's a partnership from Duchenne UK, Spinal Muscular Atrophy UK and the Inclusionaries Lab at University of Liverpool.

Nature Positive Food Challenge by Ellen MacArthur Foundation and Sustainable Food Trust aims to reshape the food industry to tackle climate change and biodiversity loss.

Space4Nature will use satellite imagery to assess land and wildlife habitats so it can target conservation work and restore wildlife. It's a collaboration between Surrey Wildlife Trust, Painshill Park Trust, University of Surrey and Buglife.

Dream Funds awarded from Postcode Innovation Trust.



“Dream Fund offers an unrivalled opportunity for charities and organisations to work together to deliver an original, high impact, innovative project. These projects are all very different, but they are each aspirational in their solutions to deliver change to the critical issues affecting our communities.”

Laura Chow, Head of Charities, People’s Postcode Lottery



Six years of Magic Little Grants

In 2017, People's Postcode Lottery launched its partnership with Localgiving to provide mini grants of £500 to small, local charities and community groups across Britain. Over six years, this funding has expanded more than tenfold – from £100,000 in grants going to 205 groups in 2017, to £1.3 million being awarded to 2,650 groups in 2022. *

* Funds awarded from People's Postcode Trust, Postcode Community Trust, Postcode Local Trust, Postcode Neighbourhood Trust, Postcode Places Trust and Postcode Society Trust.

Total of over

£3.5 million

in small grants to more than

4,000 groups

from 2017 to 2022



Our report, *Limitless Potential*, highlights that charities are losing out on millions of pounds due to legal limits on charity lottery fundraising. From left to right: Clara Govier, Managing Director of People's Postcode Lottery, Tracey Crouch MP, and Dame Laura Lee, Chief Executive of Maggie's.

Lifting the cap on fundraising potential

In autumn 2022, People's Postcode Lottery stepped up its campaign for further reforms to the UK's restrictive charity lottery legislation, with a call to scrap annual sales limits altogether.

Long-awaited changes to charity lottery legislation saw annual sales limits raised from £10 million to £50 million in 2020. However, this increased limit remains restrictive, as shown in the new report *Limitless Potential – the case for lifting the cap on charity lottery fundraising*, published by our public affairs team in September 2022.

The report demonstrates how three Postcode Trusts each lost out on around £1 million of potential income in 2022, with 31 funded charities already impacted. It warns that more Postcode Trusts – and more funded charities – will be affected in future.

The campaign calls on the UK Government to remove annual sales limits altogether, thereby unleashing the full fundraising potential of charity lotteries. Continued reform will allow the thriving charity lotteries sector to deliver even more funding for the vital work of charities. All at no cost to the public purse.

"Now is the time for the UK Government to press on with its reforms of charity lottery legislation. We urgently call for the annual sales limit to be scrapped altogether, or at the very least raised to £100 million, as the Government previously pledged."

Clara Govier
Managing Director

"People's Postcode Lottery changes lives for the better – for players, charities and service users. Upping or completely removing charity lottery limits would be an effective, impactful way to increase the funds flowing to charities at a critical time of need. It would be a quick win for Government, for charities and society. My question to Government is: why wouldn't you?"

Rachel Kirby-Rider
Chief Executive, Young Lives vs Cancer



In November, neighbours in Beccles, Suffolk celebrated together when they won a share of £3.2 million.



December Postcode Millions winners in Goring-by-Sea.



December Postcode Millions winner Stacey Rivers.

Celebrating on Britain's streets

Across England, Scotland and Wales, neighbours play together and celebrate wins every day. Prizes usually range from £10 to £30,000, right up to a substantial share of the monthly Postcode Millions.

This year, over 8.7 million Postcode Lottery players celebrated a win, sharing a total of over £220 million in prizes between them.

Ambassadors were knocking on doors and ringing bells to bring excitement and surprises to streets around Britain.

In July, 15 neighbours in East Riding could not believe their luck when their postcode delivered a win for the second time in three years. Kilham neighbour Elizabeth Kennedy and her husband Stuart were surprised with a £100,000 win in their 40th wedding anniversary year.

"I can't believe this has happened again! We won £4,254 in 2019 and kept playing because we liked supporting the charities, but we never thought we'd win again ... Lightning really can strike twice!"

Our biggest Millions ever

This year's December Postcode Millions saw our largest prize yet – a huge £16.9 million – land in Goring-by-Sea, West Sussex. With over 700 residents winning it means one in ten people in the town celebrated a win, and 12 people took home £379,062 each. Their win was broadcast on national television as part of a partnership with ITV.

Among the ecstatic winners was Stacey Rivers, single mum to seven-year-old twin sons, one of whom has leukaemia.

"My son has got a year and a half of treatment and then I've promised them both we'll go on a huge trip of a lifetime. This is going to help a lot."



Elizabeth Kennedy and her husband Stuart.



In March, Georgia Hooley's TikTok celebrations set the internet alight with over a million views. Lucky Georgia, one of five neighbours in Wessington, Derbyshire to win, landed a cool £60,000 thanks to playing with two tickets.



When livestock farmer Bob Atkinson and wife Margaret had a knock on their door in Padiham, Lancashire, in March, they were lost for words. But Bob soon revealed he'd spend his win on buying grass fertiliser for his 100 acres of farmland, which had risen steeply in price.



Postcode Millions landed in the Lanarkshire town of Wishaw in February, with 620 neighbours sharing the £7.9 million prize pot. Six were lucky enough to take home cheques for £368,461. One of them, Jean Moffat, said:

"I'm over the moon, absolutely over the moon. I'm going to help as many people as I can with it."



Over 100 neighbours in Seaton, Aberdeen, took home a share of £3.2 million in October's Postcode Millions. Among them was 83-year-old Alexander Hardingham, who won over £730,000 with two tickets.

"I can't believe it ... this feels like a fairy tale, just like the movies."



When 26-year-old student Gokulnathan Senthilnathan Shananthi bagged a £13,996 share of Aberdeen's Postcode Millions win in October, he was thrilled with the extra financial boost to get him through his MBA at the University of Aberdeen. He also pledged to buy gifts for his mum and brother, who have been supportive of his studies.



When pensioners Denise Bell and Alan Shaw received news of their win in June, they vowed to tie the knot in Las Vegas... 29 years after getting engaged! The couple from Arnold, Nottinghamshire, won £90,000 between them.



When self-employed tradesman Darren Coates of Bedlington, Northumberland, heard of his Street Prize win in February, he and his wife Judith happened to be in Edinburgh. So, they popped into People's Postcode Lottery HQ to meet the team and collect the cheque.



Street Prize winner Jasbinder Sohal and his wife Meenah were bowled over when the team knocked on their door in Reading, Berkshire, in July.

Ambassadors



We say G'day! to Jason Donovan

In September, the former Neighbours actor and pop star became People's Postcode Lottery's newest ambassador. Jason's training to prepare for his role included a set of gruelling challenges devised by fellow ambassador Jeff Brazier and shared with the nation in a series of entertaining TV adverts.

From left to right: Matt Johnson, Judie McCourt, Jason Donovan, Jeff Brazier and Danyl Johnson.





Fun is one of our core values. Team Day 2022 was a perfect opportunity for everyone to come together and celebrate our achievements.

Fun Sharing Courageous Sustainable

We are led by these four core values - fun, sharing, courageous, sustainable. We are a team driven by a social mission to make the world a better place for people and planet. We do this by selling tickets and raising vital funds for charities and good causes in Britain and beyond.

Always striving to improve

We are committed to creating a working culture that is inclusive, representative and celebrates diversity in everyone. But we are not perfect. We will always strive to do better – that is just who we are and what we do.

In 2022, we introduced unconscious bias training for every People’s Postcode Lottery team member for

the first time. Acknowledging our unconscious biases and increasing awareness means we can help create equal opportunities for all.

Dementia inclusive training was offered as standard for every member of our customer experience team. With a greater understanding of the issues faced by people living with dementia, our team are better able to communicate with and support them.

Healthy competition

An energising movement challenge got us off the sofa in February. With one in four team members taking part, they racked up an impressive 15,037 kilometres across 3,617 different activities.

Putting our people first

Our team’s wellbeing matters. In the dark winter months of January and February, team members were able to take an additional break every day – this initiative was the equivalent to two extra days off.

“This is really helpful and once again shows People’s Postcode Lottery puts the teams’ wellbeing at the heart of what it does. Thank you!” - Stefan Pearson, retention manager

“This makes a huge difference – so far I’ve taken two longer lunches to walk and soak up the little bit of sun we had last week.” - Andrew Main, software developer

We have also expanded our Edinburgh headquarters to provide an enhanced working environment. The additional space provides extra meeting rooms, a television studio, a new café area, and gym facilities.

Learning at Work Week

We demonstrated our commitment to promoting lifelong learning by offering Learning at Work week in May. Team members were encouraged to share their skills, and a range of sessions – from pet first aid to sign language – were available.



A bake sale by the team raised money for Young Lives vs Cancer and the Ellen MacArthur Cancer Trust.



We are committed to personal development and career growth.

Fundraising from the team:

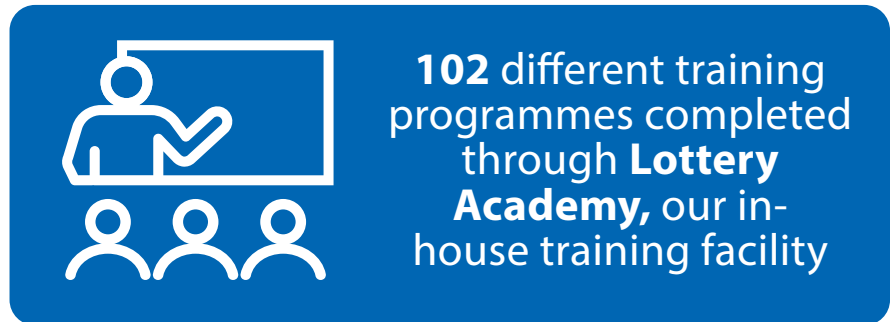
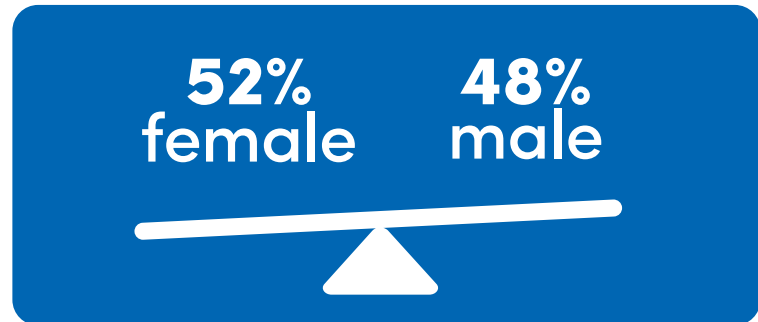
The issues that matter to our team matter to us too. In 2022, we match-funded a number of individual fundraising efforts across the team.

Customer experience team manager Siobhan Fergusson, who lives with endometriosis, summited Mount Kilimanjaro in August, raising money for Endometriosis UK. Our donation of £3,000 took her fundraising total to over £6,500.

To mark Childhood Cancer Awareness Month, team members donned their aprons and raised £584 with a bake sale for Young Lives vs Cancer and the Ellen MacArthur Cancer Trust. With match funding, the total was £1,168.

Daniel Warren from our TV team jumped on his bike for player-supported charity British Red Cross’ Ride for Tomorrow initiative. With match funding from us, £968 went to help people in crisis situations.

Team generosity continued up until the end of the year. During our now annual Giving Tree drive, over 20 bags of clothing and food supplies were collected and donated to two nearby food banks.



Doing business sustainably

We care about building a sustainable future – both for people and for the planet.

Good Operations is our commitment to operating in a sustainable and responsible way.

Customer-focused campaigning

Our customers are our players. We aim to engage them in our mission – we show them the incredible things achieved by charities and good causes around the world and thank them for their support.

Funding for resilience

Our unique model of unrestricted, flexible, long-term funding gives our supported charities breathing space to build capacity and resilience and focus on growing their services.

Operating with integrity

We strive to do the right thing and be the best we can possibly be. We are committed to integrity and transparency across all areas of our business. Our conduct is built around industry best practice. We go above and beyond to protect personal data and ensure safe play.

A great place to work and meet

Our people are our greatest strength. We create a safe and inspiring workplace where they can be their best. We focus on their wellbeing and invest in their development. We aim to maintain a thriving, equal and respectful environment, guided by our values and shaped by our team.

Relationships built on trust and transparency

Our relationships with funded charities, our team and our suppliers are built on trust – and a code of conduct based on transparency and fairness. We work closely with our partners to analyse and better understand our areas of impact.

More on sustainability:

postcodelottery.info/about-us/sustainability

Making everyone feel welcome

We are continually improving the accessibility and inclusivity of our products and spaces to make them more welcoming for people of all abilities, whether they are players, partners, or team members.

Our expert team is working to ensure that all our digital products meet international digital accessibility standards, to make them more user-friendly for those with dyslexia, for example.

At our Edinburgh headquarters, visitors and team members with hearing aids are now better catered for, with hearing loops installed in the board room, café space and new seminar facilities.

And this year we were named a Visibly Better Employer by the Royal National Institute of Blind People, recognising the support we provide to colleagues affected by sight loss, and our commitment to include those with sight loss in recruitment.





Committed to EDI

This year, we continued to build on our commitment to equality, diversity and inclusion (EDI):

- We have EDI Champions among our team members in every part of the business
- We monitor progress on diversity by collecting data for existing staff and applicants
- Unconscious bias training for all our team members was introduced this year

Throughout 2022 the team celebrated diversity with a number of events, including Pride Month and Black History Month.

Reducing carbon emissions

In 2022, we continued to work towards our goal of halving our carbon emissions by 2025 (from a baseline year of 2018):

- Carbon budgeting was introduced across all departments, linking the main drivers of CO2 emissions with budgets or usage data. This means emissions are now considered during procurement
- Changes to the air conditioning system at our head office have made it more energy efficient, and the roll-out of LED lighting continued in 2022
- We partnered with data centres that use renewable energy for cloud data services
- A carbon neutral printer was introduced for our printed marketing materials

The team get GOing

In October, GO Week saw a series of events in our office exploring aspects of our Good Operations ethos. It featured talks by charity partners including WaterAid and The Trussell Trust.

A highlight was a fashion show called Sashay for the Planet, with team members taking to the catwalk in stylish pre-loved clothing. It was delivered with charity partner the Ellen MacArthur Foundation, which is pioneering the transition to a circular economy.



The team made carbon reduction pledges as part of GO Week.

How we are reducing single-use plastic



E-gift cards instead of plastic gift cards for prizes in kind



Reusable water bottles made from recycled plastic as prizes in kind



Compostable packaging for onsite catering at our HQ

Certified responsible gaming

In August, Novamedia/Postcode Lottery Group achieved European Lotteries Responsible Gaming Certification, which recognises the highest standards of player protection and safety.

The group has been a European Lotteries member since 2021, and all members are required to meet a broad set of responsible gaming standards. These include how operators meet advertising regulations, minimise any potential harm on society, how they contribute to broadening and deepening scientific insights about the possible risks of some games of chance and much more.

Financial Reporting

Our performance in 2022 (in £1,000)

	Share of total			
	2022		2021	
Ticket Revenue	554,989	100%	533,846	100%
Charities	183,146	33%	173,522	32.5%
Prizes	221,995	40%	213,538	40%
PPL Operator Revenue	149,847	27%	146,785	27.5%

Postcode Trust	2022
People's Postcode Trust	2,747
Postcode Active Trust	7,325
Postcode Animal Trust	13,735
Postcode Care Trust	10,073
Postcode Children Trust	14,651
Postcode Community Trust	2,747
Postcode Culture Trust	8,241
Postcode Earth Trust	14,651
Postcode Education Trust	12,820
Postcode Global Trust	9,157
Postcode Green Trust	8,241
Postcode Innovation Trust	9,157
Postcode International Trust	12,820
Postcode Justice Trust	14,651
Postcode Local Trust	2,747
Postcode Neighbourhood Trust	4,578
Postcode Places Trust	2,747
Postcode Planet Trust	12,820
Postcode Society Trust	4,578
Postcode Support Trust	14,651
Total	183,146

Funds for charities and good causes

GOOD CAUSE	AMOUNT (£)
People's Postcode Trust	
1st Elgin Scout Group	20,613
30th Glasgow Scout Group	16,442
Àban Outdoor Ltd	25,000
ApparelXchange	25,000
Argyll and Bute Rape Crisis Ltd	20,900
Avenue Confidential	24,799
Ayr Housing Aid Centre SCIO	24,510
BallsandBoots	23,350
Bikes for Refugees SCIO	25,000
Blunt Knife Co. Ltd	2,500
British Society of Soil Science	5,000
Buggy Walks	2,500
Caledonia Funeral Aid CIC	11,776
Calum's Cabin	23,888
Cancer Support Scotland	25,000
Cerebral Palsy Scotland	25,000
Citadel Arts Group	12,500
Civil Rights First	20,000
Clackmannanshire Economic Regeneration Trust SCIO	24,430
COAST - Community of Arran Seabed Trust	23,077
Coatbridge Citizens Advice Bureau	14,809
Coorie Creative CIC	25,000
Covid Aid	22,230
Cuillin FM	12,500
Cumbernauld and Kilsyth Care	25,000
Cunninghame Furniture Recycling Company	24,915
Dalkeith and Monktonhall Brass Band	9,053
Drylaw Telford Community Association SCIO	21,500
Dundee and Angus ADHD Support Group	25,000
Edinburgh City Mission SCIO	15,000
Edinburgh School Uniform Bank	20,000
Empty Kitchens Full Hearts	25,000
Faith in Community Dundee	24,800
Family Journeys Ltd	24,180
Firth of Forth Lobster Hatchery	16,707
Forres Area Community Trust	25,000
Foundation for Positive Mental Health	25,000
Four Pillars	25,000

Fresh Start Scotland	2,500
Friends of Scottish Settlers	25,000
Good Call Mobile CIC	22,500
Govan Community Project	24,715
Grangemouth Old People's Welfare	8,988
Group for Recycling In Argyll and Bute Trust Ltd (GRAB)	11,315
Heart of Newhaven Community	2,416
Hearts & Minds	21,605
HOPE Connections	22,598
Ignite Theatre	24,480
Interest Link Borders	6,000
Interfaith Glasgow	24,905
Irvine Cricket Club	2,300
Jedforest Instrumental Band	24,877
Kindred Advocacy	23,708
Lauder Community and Leisure Centre	25,000
Lauderdale Community Shed	22,438
Learning through Landscapes	138,162
Linton Lane Centre	23,618
Localgiving Foundation	206,937
Lorn and Oban Healthy Options Ltd	23,500
Lothian Autistic Society	22,150
Make 2nds Count	24,300
Mauchline Holy Fair Event	2,500
Mayfield and Easthouses Youth 2000 Project	19,483
Merry-Go-Round Glasgow	24,729
Midlothian Foodbank SCIO	25,000
Millport Town Hall	25,000
Movement Evolution Scotland CIC	6,968
Nairn Coastal Rowing Club	3,684
Nature's Nook	22,553
Park Villa Football Development	21,600
Pause and Breathe CIC	25,000
Peace & Justice Scotland	11,250
Play Midlothian	19,409
Possilpark People's Trust	11,035
ReAct - Refugee Action Scotland	15,498
Safety Awareness Glasgow	5,843
Sanday Afternoon Club	25,000

Scotdec (Scottish Development Education Centre)	24,729
Scottish Detainee Visitors	15,000
Scottish Documentary Institute	23,040
Scottish Environment LINK	12,000
Shetland Canoe Club	2,450
Social Good Connect	2,500
Speech Language Communication Company	21,256
Spotlights Community Youth Theatre	13,684
Stellar Quines	19,770
Strathfillan Community Development Trust	24,672
Strengthening Communities for Race Equality Scotland	24,735
Ten for Zen CIC	21,380
The Alma Project	25,000
The Carloway Community Association	24,360
The Croft (Visitors' Support & Advice Centre, Barlinnie)	24,116
The Dash Club	21,168
The Glasgow Barons	25,000
The Occasional Cabaret Ltd	2,000
The Polar Academy	25,000
The Pyramid at Anderston Trust	25,000
The Salisbury Centre SCIO	23,847
The Sorted Project	21,000
The Very Inclusive Play Club (The VIP Club)	21,878
Urban Uprising	11,155
Veterans Tribe Scotland CIC	25,000
Viewfield Garden Collective	25,000
Volunteering Hebrides	25,000
Western Isles Foyer	25,000
Women on Wheels SCIO	25,000
World of Film International Festival	6,415
YMCA Edinburgh SCIO	19,602
Youth Theatre Arts Scotland	12,000
Youth Vision	23,296

Postcode Active Trust	
Cruyff Foundation	450,000
Ellen MacArthur Cancer Trust	450,000
Greenhouse Sports	450,000
Lord's Taverners	800,000
Newcastle United Foundation	450,000
Street League	800,000
Street Soccer	100,000
The Ramblers	2,500,000
Tottenham Hotspur Foundation	600,000

Postcode Animal Trust	
Battersea	1,000,000
Cats Protection	2,500,000
Dogs Trust	3,300,000
Hebridean Whale and Dolphin Trust	50,000
Medical Detection Dogs	500,000
PDSA	3,000,000
Pets As Therapy	50,000
Riding for the Disabled Association	600,000
RSPCA	350,000
Scottish Society for the Prevention of Cruelty to Animals (SSPCA)	175,000
The Froglife Trust	50,000
The Guide Dogs For The Blind Association	2,000,000
The Last Chance Hotel	50,000
Traffic International	300,000

Postcode Care Trust	
Alzheimer's Society	800,000
Breast Cancer Now	2,500,000
Carers Trust	800,000
Dementia Adventure	400,000
Maggie's	3,000,000
Music in Hospitals & Care	200,000
Royal National Institute of Blind People	2,250,000
Scotland's Charity Air Ambulance	200,000
The Food Train	200,000
The Trussell Trust	200,000

Postcode Children Trust	
Barnardo's	3,000,000
Children 1st	900,000
Children North East	400,000
Daisy Chain	400,000
Girllguiding	3,000,000
Magic Breakfast	600,000
NSPCC	2,500,000
Place2Be	600,000
Whizz-Kidz	500,000
Young Lives vs Cancer	2,500,000

Postcode Community Trust	
Action for Elders Trust	22,360
Adverse Camber Productions Ltd	7,500
Ardour Academy	2,500
ASDES Autism Skills Development Employment Support	14,950
Autistic Minds Ltd	25,000
BARC (Bridgend Adult Resource Centre) Bridgend Community Outreach Centre CIC	24,600
Bedford Street Community Company	24,050
Beyond the Border Storytelling	25,000
Beyond Words Thousand Voices CIC	24,758
Bigmoose	25,000
BlueGreenCymru CIC	25,000
Boys and Girls Clubs of Wales	23,436
Brecon Mountain Rescue Team	25,000
Bridgend Carers Centre	24,962
Bryncynon Community Revival Strategy Ltd	23,192
Bullies Out	18,765
Buttle UK	100,000
Bwlchygroes Community Hall Committee	19,192
Caldicot Town Team	2,500
Call Of The Wild Development Trust CIC	22,630
Cardiff Institute for the Blind	25,000
Cardiff Salad Garden CIC	16,508
Cardiff Writers' Circle	1,360
Carmarthen Family Centre	25,000
Children's Leukaemia Society	25,000
Chloe's Community Cupboard	25,000
Coed Eva Athletic FC	2,040
Community Music Wales	20,401
Contemporancient Theatre CIC	5,500

Conwy Mind	25,000
County in the Community	23,995
Creations of Cymru Film and Media	25,000
Cymer Afan Community Library	25,000
DAFFODILS	24,424
Dangerpoint Ltd	24,570
DASH - Disabilities and Self Help	25,000
Discovery - Student Volunteering	21,106
Displaced People in Action	24,300
Drosi Bikes CIC	24,444
Emmaus South Wales	24,752
Family and Therapy CIC	25,000
Family Friends	25,000
Fferm Goedwig Gymunedol Dyffryn Tanat Valley Community Fores	20,733
Fiery Jacks CIC	23,037
Fighting Homelessness CIC	25,000
Fio	25,000
Friends of Cwm Playgrounds	2,500
Garnant Family Centre	25,000
Golden-Oldies (Goldies Cymru)	12,100
Greenstream Flooring CIC	25,000
GUILSFIELD Community Bowling Club	2,500
Happy Go Lucky Theatrical Company	1,641
Headway Cardiff & South East Wales	7,500
Hiddenabilities CIC	4,480
Home-Start county borough of Wrexham	25,000
Intergenerational Music Making	17,643
Jac Lewis Foundation	23,000
Lampeter Family Centre	25,000
Learning through Landscapes	137,048
Let's Talk Mens Mental Health	13,100
Llanmorlais Community Hall Charity	25,000
Localgiving Foundation	206,937
Mid & North Powys Mind	18,860
Neuro Therapy Centre Ltd	19,600
Newport U3A	8,625
North Wales Crusaders Foundation	23,868
On Course Foundation	11,648
Outside Lives Ltd	25,000
Pembrokeshire People First	24,658
Penrhyncoch and Trefeurig Recreation and Sports Association	25,000

Race Council Cymru	75,000
RCT People First Ltd	23,627
Recovery Cymru Community	25,000
Refurbs Flintshire	19,264
Rekindle Home	50,000
Resolven Building Blocks	18,602
Sandy Bear Children's Bereavement Charity	25,000
Sea Trust Wales	19,289
Seren in the Community	10,501
Sound Progression Ltd	19,000
Sparkle	25,000
SPLICE Child and Family Support Project	16,171
Sustainable Wales Cymru Gynaliadwy	25,000
Swansea City Opera & The Opera School Wales	14,000
The 10:10 Foundation	24,908
The Aloud Charity	25,000
The Elemental Adventures Project CIC	24,860
The Family Place Foundation	9,400
The Gellideg Foundation Group	25,000
The Intersensory Club	19,000
The Mentor Ring	24,840
The Mullany Fund	14,000
The Ystradgynlais Miners Welfare and Community Hall Trust	20,000
Tintern Recreation Centre And Village Hall	15,000
Vibe Youth CIC	20,750
Wace Chester CIC	23,000
Wales Environment Link	25,000
Waunarlwydd Galaxy AFC CIC	17,040
WeMindTheGap	25,000
Windswept CIC	24,480
Wrexham Community Broadcasting CIC	23,040
Wrexham Youth & Play Partnership	24,980
Y Ty Celf - The Art House Ltd	8,320

Postcode Culture Trust	
Artcore Ltd	75,000
Black Country Touring	75,000
Edinburgh International Book Festival	600,000
In2scienceUK	75,000
MAC Birmingham	600,000
Museums Galleries Scotland	150,000
National Galleries of Scotland	700,000
National Museum Wales	600,000
National Museums Scotland	600,000
Science Museum Group	700,000
Scottish Documentary Institute	75,000
Sistema Scotland	600,000
V&A Museum of Design Dundee	600,000
Youth Music	2,500,000

Postcode Earth Trust	
Canal & River Trust	2,500,000
ClientEarth	1,500,000
Ellen MacArthur Foundation	1,500,000
Friends of the Earth	3,000,000
Greenpeace Environmental Trust	1,500,000
Keep Britain Tidy	1,000,000
National Trust	1,000,000
National Trust for Scotland	800,000
Surfers Against Sewage	300,000
The Big Give	150,000
The Conservation Volunteers	800,000
Yorkshire Dales Millennium Trust	500,000

Postcode Education Trust	
AfriKids	600,000
Book Aid International	700,000
Children on the Edge	300,000
Global Fund for Children	500,000
Restless Development	300,000
Save the Children	3,020,000
STiR Education	300,000
Theirworld	2,500,000
Unicef UK	2,500,000
War Child	3,000,000

Postcode Global Trust	
APOPO	800,000
Amref Health Africa UK	400,000
Humanity & Inclusion UK	300,000
Médecins Sans Frontières	1,250,000
Ndlovu Care Group	500,000
Sightsavers	2,500,000
The Halo Trust	400,000
WaterAid	3,000,000

Postcode Green Trust	
Fauna & Flora International	1,500,000
Forum For The Future	200,000
Global Greengrants Fund UK	900,000
Royal Botanic Garden Edinburgh	800,000
Royal Botanic Gardens, Kew	800,000
The Royal Parks	900,000
Trees for Cities	200,000
Woodland Trust	3,000,000

Postcode Innovation Trust	
Carefree	150,000
Down to Earth Project	150,000
Duchenne UK	1,250,000
Ellen MacArthur Foundation	1,250,000
Growing for Good CIC	193,000
Habitat for Humanity Great Britain	250,000
Hatch	80,000
Impact Hub London	78,089
Lighthouse Futures Trust	250,000
London Early Years Foundation	250,000
Micro Rainbow CIC	250,000
National Migraine Centre	182,282
Neurokinex	250,000
Nordoff Robbins	250,000
Offploy CIC	165,000
Purple Shoots	250,000
Scottish Edge	77,000
Social Enterprise Academy	75,000
Social Investment Scotland	70,000
Terrence Higgins Trust	250,000
The Surrey Wildlife Trust Ltd	1,250,000
WYK Group Ltd	150,000

Postcode International Trust	
Action Against Hunger	1,000,000
ActionAid	3,000,000
ADD International	300,000
British Red Cross	3,000,000
CARE International UK	1,000,000
Mary's Meals	800,000
Oxfam GB	2,500,000
Practical Action	300,000
Women Win	600,000

Postcode Justice Trust	
Amnesty International UK	3,000,000
Global Witness	800,000
Helen Bamber Foundation	500,000
Human Rights Watch	1,000,000
Liberty	800,000
MDIF	100,000
Peace Direct	900,000
Plan International UK	3,000,000
Reprieve	300,000
The Sentry	800,000
Thomson Reuters Foundation	800,000
Women for Women International	900,000

Postcode Local Trust	
4Youth (South West)	19,850
A.P.E. Project CIC	7,200
Activating Creative Talent CIC	24,151
Allsorts Gloucestershire	16,227
Bath City Farm	24,996
Bath Gateway Out and About	25,000
Beating Time	25,000
Being You Therapy	24,930
Biddulph Youth and Community Zone Ltd	25,000
Big Breakfast Plus	15,000
Borderlands Ltd	25,000
Borrow Don't Buy CIC	23,000
Bournemouth Spear Trust	15,000
Bow Village Hall and Field	25,000
Bristol Association for Neighbourhood Daycare	5,000
Bristol Hospitality Network	23,422
Bristol Tree Craft CIC	25,000
CAP-UK (Child Assault Prevention)	24,533

Caryford Community Hall Association	3,089
CHAS Bristol (Churches Housing Aid Society)	15,000
Citizens Advice Mendip	18,392
Common Soil (Cotswolds) Ltd	24,932
ConGens Group	23,058
Connect Us Academy CIC	20,560
Creativity Works for Everyone	14,550
Devizes Outdoor Celebratory Arts	23,101
Devon County Association for the Blind	20,000
Doorway Wiltshire Ltd	12,000
Dorset Parent Infant Partnership	22,353
Double Elephant Print Workshop	14,640
Dyslexia Cornwall	25,000
ecobirmingham	24,958
Everyone 4 Sport CIC	9,050
Exeter Science Centre	25,000
Express & Star Bowls Club	2,120
Girls Assemble UK CIC	25,000
Greatwood Charity	19,616
Guardian Ballers CIC	16,380
Gympanzees	13,000
HeadsUP Mental Health Awareness CIC	16,500
Home-Start North Dorset	20,000
Home-Start Torridge & North Devon	23,537
Ignite Life	20,000
Inner Flame	25,000
IPSUM	20,140
Jacari	20,000
Kennet Valley Village Hall	10,000
Kernow Conservation CIC	25,000
Kingsbridge Area Food Bank	20,000
Learning through Landscapes	137,048
Little Stars Baby Bank	24,952
Localgiving Foundation	206,457
Manor Park Sailing Club	2,000
Mission Remission	24,500
Moonstruck Astronaut CIC	10,870
Move More	13,681
NewStarts	25,000
NMC Midlands (T/A Muscular Dystrophy Support Centre)	5,000
Off the Record Bath & North East Somerset	24,975
Open Harmony CIC	12,800

Perranporth Bowling Club	2,155
Phoenix Bereavement Support Services Ltd	22,818
Planet & People CIC	15,000
Planet Earth Games Trust	24,892
Prime Theatre	25,000
Project MAMA	24,987
Proud2Be CIC	25,000
R J Working CIO	12,877
Rage Arts	25,000
ReachOut Creative Futures CIC	16,738
Red Brick Building Centre Ltd	23,630
Rugby Rhinos American Football Club	2,500
Scary Little Girls Association CIC	25,000
Seachange Devon	10,437
Sensory Trust	17,556
Shallal	24,000
Shri Pashupatinath Mandir of UK	19,805
Somer Valley Education Trust CIO	17,640
South Dartmoor Community Energy Ltd	23,890
Sport 4 Life UK	18,513
St Pauls Advice Centre	25,000
Swindon Therapy Centre for Multiple Sclerosis	21,120
Talking Money	19,000
Taunton Muskets Baseball Club	2,500
The Chalk Effect Climbing Project CIC	24,915
The Freshford Village Memorial Hall	25,000
The Gina Project CIC	24,081
The Harbour	25,000
The Hollow Lane Club	9,540
The Hugs Foundation	15,000
The Mortimer Community Benefit Society Ltd	20,198
The Nest Southwest CIC	17,730
The Ogwell Memorial Hall	17,800
The SAMEE Charity	20,076
The Sea Change Trust	24,860
The Space CIO	19,000
The Village Hall, Belstone	18,295
The Wind Project Ltd	25,000
Time Banks UK	25,000
Tor Support Services	18,692
Towards Tomorrow Together	25,000
Trauma Breakthrough	24,300
TSA Sports and Education CIC	25,000

Urban Wilderness Stoke CIC	24,960
Vision North Somerset	22,423
Voices for Life	15,000
Walsall Society for the Blind	25,000
Wick Care Farm CIC	15,368
Wiltshire Blind Association	23,886
Wiltshire Mind	25,000
Wixford Village Hall	25,000

Postcode Neighbourhood Trust	
Sives Community Sports Club	25,000
Abbeydale Park Bowling Club	2,000
Ability Consultancy NW Ltd	2,500
Accrington Stanley Football in the Community Trust Ltd	24,000
Activate Rawmarsh	24,480
Active Futures, Educational Development	3,995
Actually Education CIC	21,063
Adam's Activity Ark CIC	24,990
Aire Rivers Trust	18,973
Alexandra Rose Charity	25,000
Art Therapy Yorkshire	24,979
Arts 2 Heal	23,290
Ashbrooke Sports Club Ltd	24,192
Barrel Organ CIO	14,062
Batley Sporting Foundation	15,600
Berwick Cricket Club	15,000
BLISS=Ability	22,458
Bounceback Food CIC	20,000
Breaking Cycles CIC	19,132
Bridge2 Ltd	24,320
Bright Futures NE	23,619
Bright Park	24,602
Building Self-Belief CIO	9,920
Burnage East Quids In	2,400
Butterflies Dementia Support and Activities Group	24,624
Cabasa CIC	9,750
Cap-a-Pie Engagements	24,296
Cavendish Cancer Care	24,807
Chaveirim Manchester CIC	11,390
Chopwell Regeneration CIO	24,107
Chrysalis Centre for Change	24,534
Claro Enterprises	25,000
Clean Slate Solutions	25,000

Close-Knit CIC	16,998
Collaborative Women UK CIC	24,520
Communication Matters	10,000
Community Bees CIC	23,949
Concrete Youth	25,000
Creative Living Centre	24,523
Cumbria Family Support Ltd	25,000
Cycling Minds CIC	24,300
Deafink North East	23,750
Developing Matters CIC	22,800
Doncaster Rape & Sexual Assault Counselling Service	25,000
Down Syndrome Cheshire	24,992
E.D.E.N. Film Productions	2,500
Edge Hill Youth and Community Centre Ltd	24,568
Emotional Wellbeing Group Ltd	2,500
Endeavour Training Ltd	25,000
Endeavour Woodcrafts CIC	20,916
EricKnows CIC	20,508
Everton Volleyball	2,170
Family Matters York	24,000
FareShare North East	25,000
Feeding Families	22,944
Fleetwood Trust	25,000
Flourish Together CIC	24,900
Friends Action North East	25,000
Friends of Harthill and Calderstones Park	23,983
Friends of Newton Community Park	2,481
Goldfields Organisation for Local Development of Sport	18,700
Good Companions Bolton	23,300
Greenfingers Charity	24,896
Growing Well Ltd	25,000
Happy Signs CIC	5,283
Heads up Ltd CIC	24,814
Hepworth Band	6,396
Holbeck Together	25,000
Homebaked Community Ltd	22,420
HOPE- South Yorkshire Fire, Road and Water-related Trauma Support for Families	16,791
Hull Red CIC	19,468
Humber Job Hub CIC	9,598
In His Presence Foursquare Church	9,780
In2Change South Yorkshire Ltd	19,750

Irish Community Care	25,000
Jigsaw Coaching CIC	14,500
Keyfund Federation Ltd	24,990
Kyra Women's Project	18,900
Learnest CIC	24,131
Learning through Landscapes	227,300
Liberdade Community Development Trust	25,000
Little Green Sock Project	25,000
LivedHealth CIC	15,000
Liverpool Homeless Football Club	22,200
Localgiving Foundation	336,367
Making Education a Priority	20,744
Manchester Sikh Foundation	23,060
Marsh Community Centre	20,365
Meadow Well Connected	23,850
MediCinema	12,000
Mersey Counselling And Therapy Centre	9,768
Methodist Asylum Project, Middlesbrough	12,600
Mighty Mariners Boxing Academy CIC	5,000
Moss Side Fire Station Boxing Club CIO	22,000
Movema	24,983
Mummy's Star	15,187
Neighbourhood Resource Centre	9,900
North East Environment Network	24,412
North Yorkshire Music Therapy Centre	25,000
Northern Allotment, Leisure and Community Gardens	14,030
Northern Opera Group	10,000
Oak Tree Animals Charity	21,991
Open Country	20,000
Parallel Histories	21,821
Poet in the City	4,400
Pool Arts	16,800
Premier Learning	24,600
Proud 2 b Parents	24,518
Quids In Merseybank	2,490
Rainbow Baby Bank	17,160
Rainbow Hub NW Ltd	25,000
Reflections Counselling Service	15,840
Regal Respite Ltd	25,000
Remade Wigan CIC	14,000
Resume Foundation	24,998
Rio Ferdinand Foundation	12,817

Ripon City Band	2,500
River And Sea Sense Ltd	2,500
Rooted In	24,989
Roots & Bloom CIC	25,000
Rosemary and Time CIC	19,200
RSACC Darlington and County Durham	9,642
Scarborough, Whitby & Ryedale Mind	24,571
Scotch Quarry Community Garden	2,500
Scotswood Natural Community Garden	24,988
Secret Santa CIC	25,000
SEND R US CIC	11,104
Sheffield ME Group	24,341
Sheffield Women's Counselling and Therapy Service	25,000
SICK! Productions	20,315
Smart Mindful Choices CIC	14,200
Special Spirits	24,940
Sports Alive NorthWest	24,975
St John's Centre	22,226
St peters Pavilion	22,911
Stick 'n' Step	21,282
String of Hearts CIC	18,648
Support After Rape and Sexual Violence Leeds	25,000
Supporting Older People	19,436
Switch the Play	24,300
Syrian British Cultural Centre CIC	24,900
Tees Valley Community Church	24,948
Teesside Vineyard Church	24,585
The Bond Board Ltd	17,224
The Bradford Bulls Foundation	17,690
The East Manchester Community Association	23,209
The Electric Sunshine Project CIC	25,000
The Ethel Trust	11,920
The Harmony Hub CIC	25,000
The Hinge Centre Ltd	19,500
The Hull & East Yorkshire Community Counselling Service CIC	25,000
The Hut York Ltd	24,995
The Laurie Brewis Trust	24,948
The Moses Project	24,578
The PCC of the Ecclesiastical Parish of All Saints Rotherham	20,457
The Recruitment Junction	25,000
The Twisting Ducks Theatre Company CIO	19,839

The Untold Orchestra	9,000
The Wildside- Learning Through Nature CIC	9,133
The Windmill Trust	25,000
The World in One City CIC	15,120
Tiny Lives Trust	17,280
TippyToes babybank	25,000
Transform Lives Company	2,500
Transition Chester	2,335
True Colours CIC	19,860
Tyne Rivers Trust	24,912
Venture Arts	25,000
Vision of Adventure	16,554
Visit from the Stork CIC	24,950
Visits Unlimited CIC	23,907
Visyon	24,913
Wales Community Theatre Players	2,315
Walton Vale Community Shop CIC	16,180
Warrington Youth Rowing	23,460
West Everton Community Council	19,786
Wheels2Work County Durham	22,823
Wigan STEAM CIC	25,000
Wirral Metro Swimming Club	2,500
Yaran Northwest	24,720
Yonder Surf Academy CIC	4,936
York Blind & Partially Sighted Society CIO	20,700
York Media Arts Festival CIO	15,500
Yorkshire Cricket Foundation	24,980
Youth Leads UK	22,380
Youth Project @ Apostles and Cuthberts	11,008
Zero Carbon Harrogate	25,000

Postcode Places Trust	
2Funky Arts	2,156
38th Chesterfield Scout Group	2,470
Access Migrant Support	19,814
Asperger East Anglia	25,000
Bangladesh Youth League Luton	24,579
Bassetlaw Food Bank	19,883
BOSP Brighter Opportunities for Special People	22,653
Cambridge Acorn Project	21,600
Cambridge Breastfeeding Alliance	24,610
Chelmsford Vineyard	25,000
CHEXS	23,737
Children First Derby	18,000
Citizen Zoo	10,050
Citizens Advice Broxtowe	18,992
Citizens Advice Bureau Tendring	24,993
City of Chelmsford Mencap	24,312
Cohere Arts CIC	11,296
Colchester Museums Development Foundation	4,900
Creative Support For Vulnerable Families And Children	23,520
Crescent Summer School CIC	22,986
Darkside Rising CIC	19,495
David Lynch Foundation UK	25,000
Derbyshire Unemployed Workers’ Centres	24,500
Dersingham Choral Society	2,500
Desire Change CIC	11,674
DIAL South Essex	21,157
Doddridge Centre Ltd	19,791
East Herts Citizens Advice Service	18,548
Eden-Rose Coppice Trust Ltd	22,009
Elevator Arts CIC	2,470
Enterprise East Group CIC	21,834
EPIC Dad CIC	25,000
Essex Respite & Care Association	15,000
Eudaimonia	19,300
Family Support Derbyshire	9,997
Fincham Memorial Hall and Playing Fields	18,000
Future Living Hertford	24,800
HandMade Theatre	13,740
Hardwick Climate Action Group	1,614
Hayton Village Hall Trust	4,225
Headway Essex	19,231

Headway Hertfordshire Ltd	25,000
Herts Disability Sports Foundation	25,000
Herts Welcomes Refugees	21,379
Hollesley Village Hall	12,443
Home-Start Cambridgeshire	17,197
Home-Start Royston and South Cambridgeshire	20,859
Home-Start Watford and Three Rivers	24,088
Hopeville CIC	24,000
Keeping Abreast	21,502
Learning through Landscapes	135,936
Learning Through The Arts	10,696
Leicestershire Action for Mental Health Project	25,000
Level Trust	25,000
Living Keys	12,353
Local Welcome	24,000
Localgiving Foundation	206,937
London Youth Games	24,500
Luton All Women Centre	25,000
Mast Cell Action	10,394
Mind Over Cancer	23,350
Music24 CIO	25,000
National Kidney Federation	24,366
New Leaf Derbyshire	2,000
Newark Emmaus Trust	24,546
Norwich and Norfolk OCD Voluntary Support Group	11,030
Nottingham Counselling Service	24,490
One Stop Advice Centre	23,760
Our Special Friends	24,812
PCrefurb	24,182
Potential Kids	8,000
POW Nottingham	25,000
PROJECT MIND EMPOWER CIC	18,936
Random Cafe CIC	15,000
REACH Community Projects	24,683
Revive Healthy Living Centre	22,199
Revoluton Arts CIC	19,000
Rock Paper Scissors Arts CIC	13,576
Root-and-Branch Out CIC	23,000
Rowan Humbertsone Ltd	25,000
S.H.E UK	12,458
SALTO Gymnastics Charitable Foundation Ltd	25,000
Souster Youth	22,036

Southend Carers	22,943
Special Needs And Parents SNAP	10,000
Sporting Inspirations CIC	6,300
Sports Connections Foundation	17,004
St Stephen's Community Trust	19,292
Strength With In Me Foundation	24,900
Sunflower Education CIC	25,000
Support4Sight	24,401
The Cambridgeshire Society for the Blind & Partially Sighted	21,914
The Ebonista Project	24,554
The Lowdown	25,000
The Meadows Children And Family Wing	24,685
The New Futures Project	24,647
The Offload Project CIC	10,396
The Recover Team Ltd	23,548
Thomas Theyer Foundation	24,400
Tilehouse Counselling	24,960
Under Open Sky Ltd	2,500
Underground Centre	18,755
Unpuzzled Theatre Company CIC	6,594
West Herts ABC and Educational Support CIC	24,696
Wilderness Foundation UK	22,105
WORTH - Women On the Road To Healing	25,000
Yesu	18,721
Yoga4all Group CIC	20,000
Young People's Puppet Theatre	25,000
Young Technicians CIC	22,224
Youth Talk	25,000

Postcode Planet Trust	
African Parks	1,500,000
Blue Marine Foundation	300,000
Cool Earth	300,000
Food and Land Use Coalition / World Resources Institute	1,000,000
John Ellerman Foundation	500,000
Marine Conservation Society	1,000,000
Royal Zoological Society of Scotland	700,000
Synchronicity Earth	800,000
Thin Green Line Foundation UK	5,000
Wildfowl & Wetlands Trust	1,000,000
Wildlife Justice Commission	300,000
Wildlife Trusts	3,000,000
World Land Trust	300,000
WWF-UK	3,000,000
Zoological Society of London	1,000,000

Postcode Society Trust	
ACE	24,960
Acheinu Cancer Support	24,930
AHOY Centre	16,100
Alive and Kicking UK	20,740
AM Partnership Group CIC	19,435
Amber Crisis Pregnancy Care	11,877
Angel Shed Theatre Company	23,192
Appeer CIC	24,276
Apsara Arts	17,792
Arts for Health MK	18,190
Baby Umbrella	19,479
Bankside Open Spaces Trust	25,000
Barkingside Community Academy CIC	24,400
Barnes Common Ltd	920
Basch Helps CIC	15,400
Basketball4all	21,620
Battersea Befriending Network	25,000
Berkshire County Blind Society	20,164
Berkshire Multiple Sclerosis Therapy Centre Ltd	25,000
Bethnal Green Nature Reserve Trust	17,060
Big Red Bus Club	10,850
Blackbird Leys Neighbourhood Support Scheme	20,997
Breadwinners	25,000
Breakfast Clubs Against Racism	19,800
Brighton & Hove LGBT Switchboard	25,000
Brighton Table Tennis Club	25,000
Browns Community Services CIC	25,000
Calm Minds - UK	20,220
Caxton House Settlement	25,000
Children on the Autistic Spectrum Parent's Association	25,000
Children with Cancer Fund	8,892
Chiltern Music Therapy	24,990
Citizens Advice Elmbridge West	25,000
Club Soda	23,810
Code1 Community Group CIC	25,000
Community Development Association for Minority Communities	14,760
Connect: North Korea	19,200
Crawley Community Action	20,800
Crawley LBGT CIC	25,000
Cray Wanderers Community Scheme CIC	10,000
Creative Futures Ltd	24,900

Crimsham Farm CIC	23,750
Crosslight Advice	12,756
Custom Folkestone CIC	24,820
Dalmar Heritage and Family Development	24,930
Dancehub CIC	24,904
Doceo Development CIC	25,000
Dogs for Autism	25,000
DreamArts	24,532
East London Cares Ltd	8,058
Ekota Care Trust Ltd	11,905
EmpathyLab	24,999
Ensemble Reza	25,000
Farncombe Community Garden	25,000
FAST London	25,000
First Days Children's Charity	21,790
Follow Your Dreamz Performing Arts CIC	24,192
Food and Friendship	6,000
Fresh Horizons CNB	20,435
Friends of Ruskin Park	21,759
Goldstar Creative Marketing	19,710
Hackney Caribbean Elderly Organisation	25,000
Happy Kids	24,679
Healthy Generations	22,940
Helping Girls Achieve	2,500
HMDT Music	24,770
Home-Start Arun, Worthing & Adur	17,830
Home-Start Chichester and District	25,000
Home-Start in Waverley	17,500
Hope for the Young Ltd	23,582
Hot Line Meals Service	24,000
IHEART Principles	22,320
In Touch/ Kids United	7,435
Indoamerican Refugee & Migrant Organisation	20,000
Islington Bangladesh Association	14,285
Jamal Edwards Delve	25,000
Kennedy Street Foundation CIO	22,500
Kicks Count	5,800
Kinship Carers Hub CIC	14,575
Knight Support CIO	16,500
Learn English at Home	22,240
Learning through Landscapes	227,300
Link UP London CIC	23,323
Literacy Pirates	15,156

Localgiving Foundation	336,367
London's Community Kitchen CIC	25,000
Marlborough Theatre Productions Ltd	21,945
Maya Productions Ltd	24,500
Mental Fight Club	24,548
Menucha Ltd	10,620
Mesila UK Ltd	16,250
Miindfulness CIC	24,840
Misgav	25,000
Museum of Homelessness	25,000
Music and Theatre for All	23,632
New Note Projects	8,011
No5 Young People	23,794
One Place East	11,250
Oxfordshire Sexual Abuse and Rape Crisis Centre	25,000
Pan Intercultural Arts Ltd	25,000
Parent Club	16,863
Pelican Parcels	24,430
PhotoVoice	19,784
Portsmouth City of Sanctuary	25,000
POW! Thanet	7,000
PramDepot CIC	20,862
Rainham Foodbank	24,051
Rap-Aid Youth FC - Fit2LiveSports	10,200
Re-Instate Ltd	23,875
Re:Charge R&R	10,000
Release Counselling and Therapy for Women CIO	24,938
Ride High Ltd	12,750
Room to Heal	24,915
SAIL - Summer Adventures For Inner Londoners	21,000
Sal's Shoes	15,000
Salisbury World	24,883
SEEN	13,328
Selsey Community Forum	18,625
Sherwood Park Hall CIC	25,000
Singing Mamas Choir CIC	22,260
SLOW	15,000
Somali Integration and Development Association	20,441
Somali Welfare Trust	16,347
Sophie Hayes Foundation	24,461
Soundcastle Ltd	20,997
South London Botanical Institute	25,000
Springboard Youth Academy CIO	20,862

St Margaret's House	9,810
Strength & Stem Ltd	25,000
Strongbones Childrens Charitable Trust	20,000
Suicide&Co	24,624
Sunbeams London Ltd	20,184
Support for All	19,427
Survivors Together	25,000
Sussex Pathways	13,500
Swale Gloves Amateur Boxing Club	2,450
Swings & Smiles	22,378
The Avenues Youth Project	25,000
The Chelsea Centre Ltd	17,806
The Cornerstone Church Group	17,500
The Crew Club	24,908
The Eden Galvani Trust	25,000
The Friends of Tower Hamlets Cemetery Park	22,850
The Happy and Healthy Trust	14,330
The Holloway Neighbourhood Group	24,978
The Hummingbird Cancer Support & Therapy Centre	24,930
The Living Paintings Trust	23,421
The Money Charity	25,000
The Moving on Project	10,170
The Mulberry Centre	25,000
The Nightingale Cancer Support Centre	23,689
The Pink Place	24,945
The Purple Elephant Project	18,864
The Real Junk Food Project Brighton CIC	24,960
The Renegades	24,532
The Ryan MS Therapy Centre	12,404
The Silverlining Charitty	25,000
The Thomley Hall Centre Ltd	24,939
Thelma Matilda Alves Foundation	23,776
Tools 4 Teens	12,070
TotRockinBeats	14,100
Transport for All	25,000
Treasures Foundation	19,895
Tree Shepherd	23,760
Tuppenny Barn Education	20,990
Tutors United	25,000
TwistFizz CIC	9,732
Underdog International	21,728
Westminster Arts	24,076

Winchester Gold	6,500
Windsor Horse Rangers	18,948
Women for Refugee Women	24,955
Yo! Street Zone CIC	13,000
Young and Inspired	12,200

Postcode Support Trust	
Crisis	3,000,000
Depaul UK	2,797,000
Kinship	400,000
Missing People	1,000,000
Re-engage	600,000
Royal Voluntary Service	3,000,000
The Prince Of Wales's Charitable Foundation	900,000
The Reader	900,000
The Silver Line Helpline	500,000
Volunteering Matters	900,000

Governance

Regulation

Novamedia/Postcode Lottery Group established Postcode Lottery Limited in Britain. People's Postcode Lottery is incorporated in England and Wales.

People's Postcode Lottery has a duty to ensure it is crime-free, fair and open and protects children and vulnerable people.

All draws use a random number generator which has been certified by a Gambling Commission approved testing organisation and are supervised by an independent adjudicator.

Although lotteries are recognised as low risk for problem gambling, People's Postcode Lottery is committed to protecting the millions of people who play. It adheres to the Postcode Lotteries-wide code of conduct on responsible play.

People's Postcode Lottery takes the management and protection of players' data and personal information seriously. It is ISO27001 accredited, which recognises the highest security standards.

Licensing

People's Postcode Lottery, a trading name of Postcode Lottery Ltd, is licensed and regulated by the Gambling Commission, the regulatory body for Gambling in Britain, under account number 829.

We are proud to be part of the Postcode Lottery Group, which operates in Britain, the Netherlands, Sweden, Germany and Norway. The instantly recognisable Postcode Lottery format is owned by Novamedia/Postcode Lottery Group.

Novamedia/Postcode Lottery Group charges a licence fee for the use of its intellectual property related to the Postcode Lottery format.

The fee is used to finance and set up new Postcode Lotteries and for the continued development of Novamedia/Postcode Lottery Group's formats.

Find out more: [novamedia.com](https://www.novamedia.com)

Trading address

28 Charlotte Square, Edinburgh, EH2 4ET

Registered office

2nd Floor, 31 Chertsey Street, Guildford, Surrey, GU1 4HD

Phone: 0800 368 5556

Email: communications@postcodelottery.co.uk

For corporate news and information: postcodelottery.info

For prizes and playing: postcodelottery.co.uk

