

People's Postcode Lottery Annual Report 2021



Our ambition is to build a fairer, greener world.



Players help bring new exhibitions to museums and galleries.



Seven Morecambe neighbours won £30,000 each in November.

Contents

2	Directors' welcome
4	Part of something bigger
4	CEO's message
5	How it works
6	16 years of impact
9	2021 snapshot
10	Much more than a knock at the door
15	We are doing more
16	The home of big wins
18	Our winners
19	Ambassadors
20	Our team
23	Doing business sustainably
25	Financial reporting
36	Governance



Street League gives young people the skills they need to thrive.



We work hard to surprise our winners and work with charities to make the world a better place.

Directors' welcome

Players of People's Postcode Lottery have been raising funds and awareness for charities and good causes of all shapes and sizes for 16 years now.

Going far beyond fundraising, People's Postcode Lottery is a partner to these organisations. It is this long-lasting partnership approach, and flexible funding model, which supports charities to grow their reach, drive innovation and continue to deliver inspiring results and solutions for people and planet.

More than £361 million was shared with our winners and good causes in 2021.

It is only thanks to the generosity of our players that a total of £173 million was raised – an increase of over £18 million on last year.

Despite a year of setbacks, restrictions and challenges for many, we have been anything but downcast. 2021 was a year of strong growth for People's Postcode Lottery, full of incredible achievements, uplifting wins and inspiring stories.

The effects of the pandemic have been widely felt, and have brought the true value of good causes and the impact of their work on lives and communities into sharp focus.

During a year when flexible funding was even more crucial to good causes and those most in need, we are pleased to report that £31 million in extra funding was awarded to 61 charities. This additional funding is a result of 2020's increased charity lottery sales limit which we – along with so many charity leaders and parliamentarians – called for and backed.

The benefits resulting from these important reforms are game changing. Administration, bureaucracy and operation costs are down, and the funds and percentage going to good causes are up.



Clara Govier,
Managing Director
and Chair



Lorna Menzies,
Managing Director
and Head of Television



Rob Letham,
Managing Director
and Head of Finance

We cannot stress enough the positive impact these changes and the vital funds they unlocked have already had. It is an incredible result, although there is always room to do even more.

Our continued success matters. It means we can keep helping thousands of organisations so they, in turn, can help individuals and communities, and create transformational change.

From campaigning for sexual harassment to be made a criminal offence, to ending child hunger in the UK, and impactful wildlife projects to restore habitats – all these significant strides towards a fairer, greener world give our work and our mission purpose.

As ever, everything achieved and delivered over this period is down to the millions of people who play People’s Postcode Lottery, the charities whose work they support and, of course, the hard work of our team. Together we can and do make a difference.

“Despite a year of setbacks, restrictions and challenges, we have been anything but downcast. 2021 was a year of strong growth for People’s Postcode Lottery.”

Highlights

£361 million
shared with winners and good causes

12% more
raised for good causes by players in 2021 vs 2020

£31 million
in additional funding for charities thanks to charity lottery reform

Double the funding
for smaller, local causes

£15 million
raised each month by players by the end of 2021



Marcus Rashford MBE, 2021’s Postcode Hero. The England international footballer presented a cheque for £250,000, raised by players, to the Trussell Trust and FareShare.



Working with WaterAid, actor and activist Mevis uses drama to teach communities about the importance of hygiene.

Part of something bigger

There are now Postcode Lotteries in five countries, working together for a single shared goal: to help make the world a better place.

It is this goal that has driven the Postcode Lotteries for over three decades.

Novamedia/Postcode Lottery Group

In 1989, Novamedia created the world's first Postcode Lottery in the Netherlands, with an ambitious mission: to raise funds to create a fairer, greener, more sustainable world.

Its lotteries are in the Netherlands, Sweden, Britain, Germany and Norway, with around 13 million players in total. Together, these players have raised €11.7 billion for charities around the world.

Novamedia and its Postcode Lotteries has ranked in the world's top three private charity donors for over a decade. In 2020/21 it was again named third largest in the world, after the Bill and Melinda Gates Foundation and the Wellcome Trust, and second largest in Europe*.

*Independent charity index published in
City A.M. Giving, December 2021

CEO's message

As an organisation and a team, we have much to be proud of when we look back over the past year. Under challenging circumstances, we have stayed true to our passionate, innovative culture and our ambition to help make the world a better place.

It is in such extraordinary times that funding from the Postcode Lotteries can continue to make an impact where it is needed most and for action to be taken.

A total of €825 million was raised for good causes in 2021 thanks to the 13 million loyal players of the Postcode Lotteries. A record high and, in true Postcode Lottery style, one we have the ambition of breaking in the year ahead.



Sigrid van Aken,
CEO, Novamedia/Postcode Lottery Group

How it works

Players of People's Postcode Lottery play with their postcode and pay £10 a month per subscription to be entered into 20 monthly draws. Winning postcodes are announced every day of the month.

The funds raised are awarded to charities and good causes by one of 20 independent, grant-giving Postcode Trusts.

With 33% of the ticket price going to charity, our players know they are helping amazing causes every day.



Nine Portishead neighbours won £30,000 each in November.

"I think it's such a brilliant concept, everyone can give a little bit and hopefully win something lovely and it's helping charities up and down the country. It's a wonderful thing to do."

Rachel, £756,150 winner
She won £378,075 for each ticket played with

"Never in my wildest dreams could I think I would win anything like that. It's not just us that has won, everybody else has got a slice of the cake as well, so it's really nice."

Marion, £342,375 winner

TICKET PRICE

33%
minimum to
good causes

1% more than
last year and
13% more than
20% regulatory
minimum

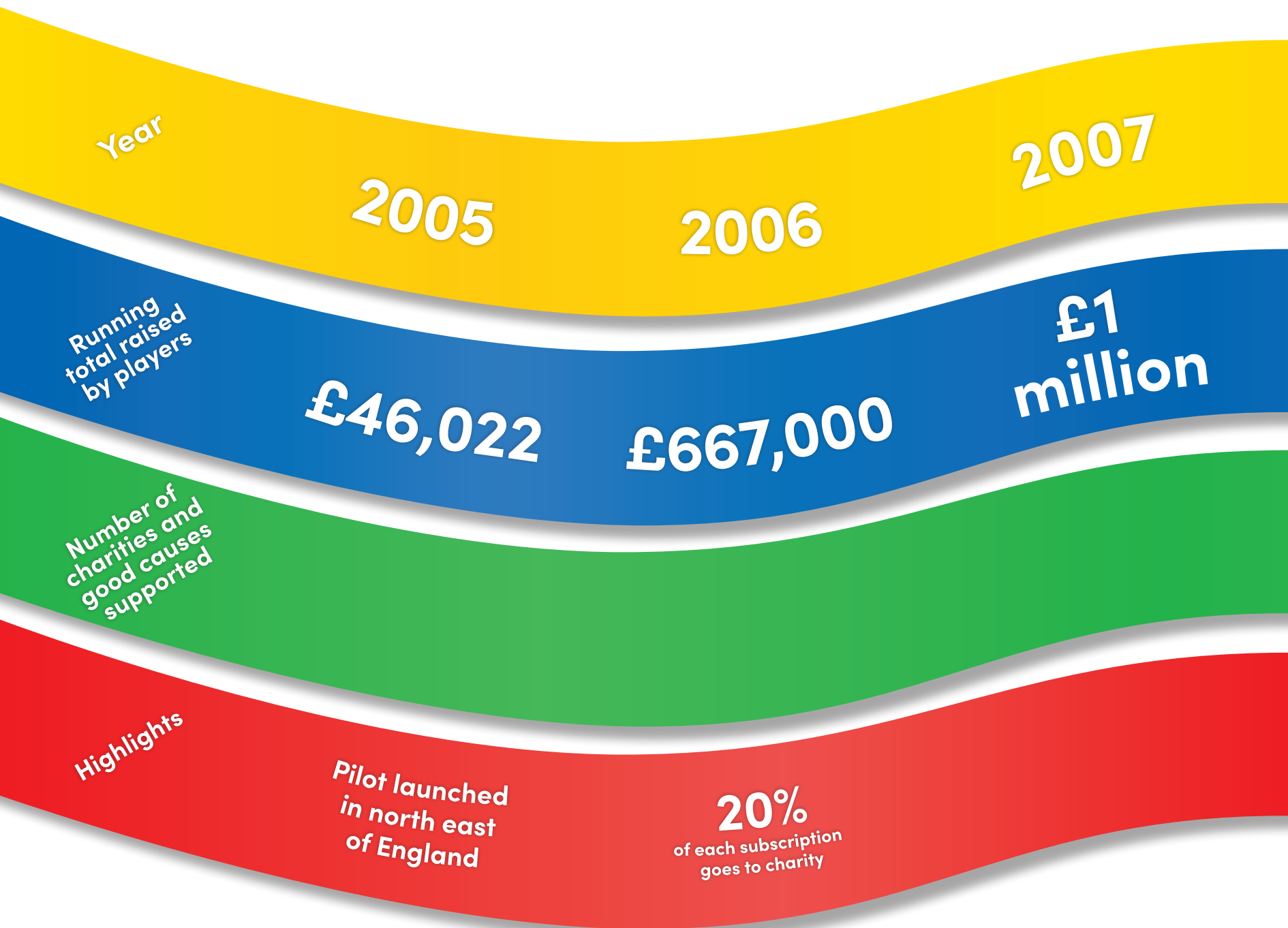
40%
prizes

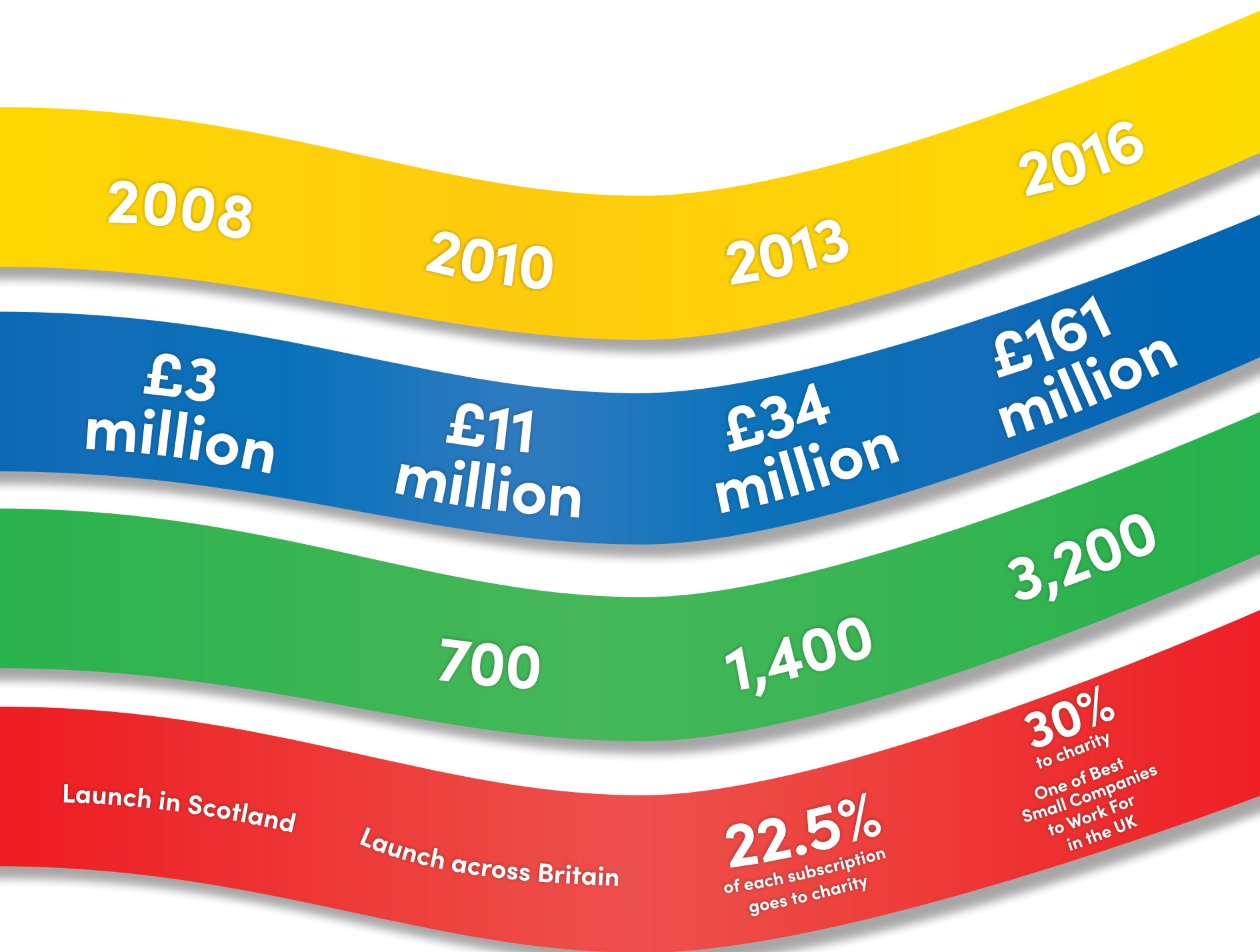
Up to
27%
operational
costs

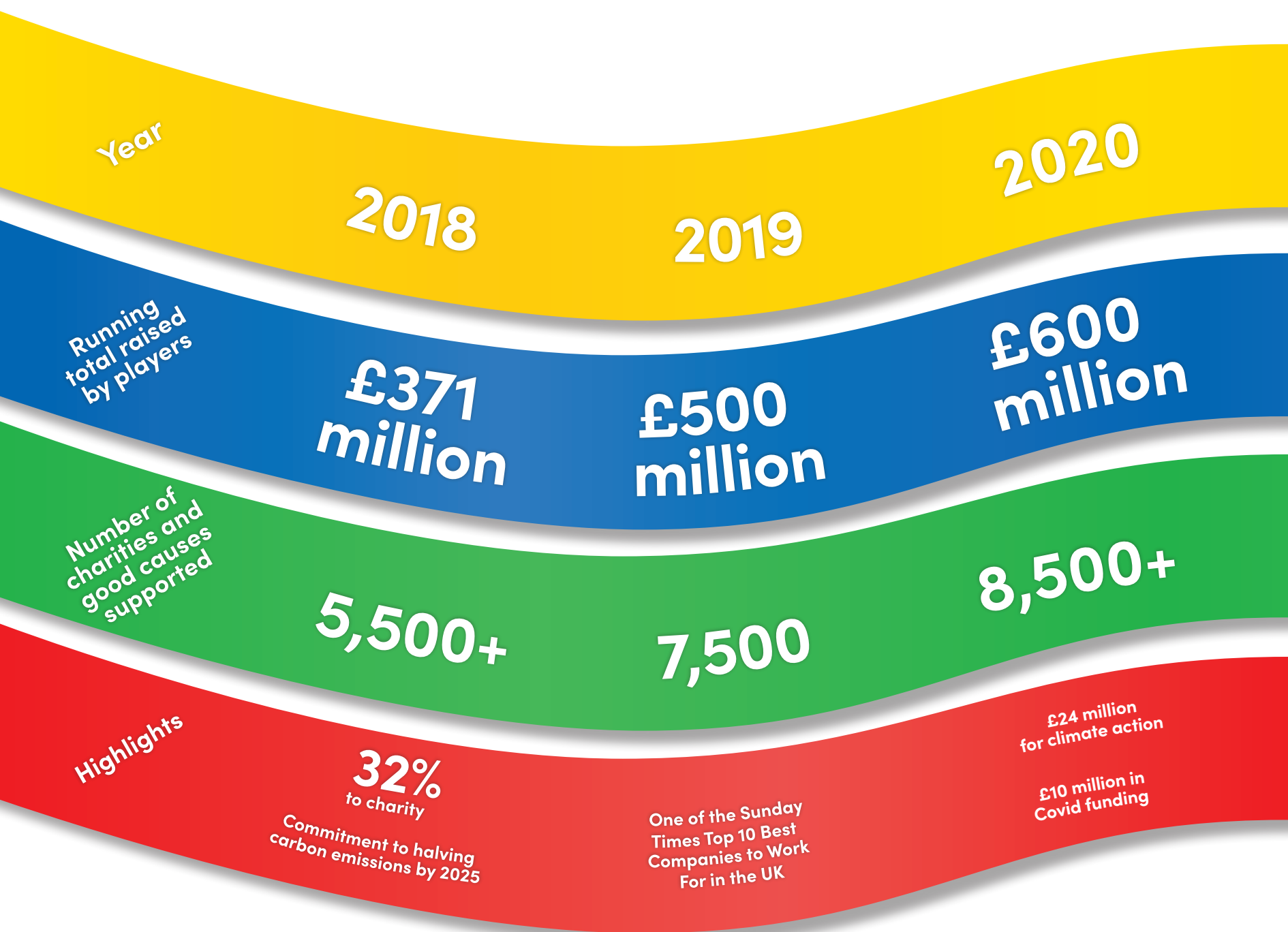
1% less
than last
year

16 years of impact

People's Postcode Lottery launched in 2005.
Since then, millions of players all across Britain
have raised over £800 million for thousands of
charities and good causes.







2021 snapshot

9,000
charities and
good causes
supported



£31 million
in extra funding for
61 charities

Funding for small,
local good causes up

50%+



33%

minimum to
good causes
up 1% = £5 million
more for charities*



3,700

local community
projects funded

£173 million
in 2021

£18 million more year
on year for charity



Over

£800
MILLION
since 2005

Much more than a knock at the door



The Ramblers help people enjoy walking in green spaces and on Britain's hundreds of thousands of miles of well-loved paths, tracks and trails.

Players of People's Postcode Lottery help make good things happen in their communities and around the world. Every ticket sold means essential funding for a range of good causes.

By the final quarter of 2021, our players were raising £15 million every month for charities.

Thanks to the continued support of players, the amount going to good causes in the past 12 months grew by £18 million to £173 million. This funding supported ambitious, impactful activities tackling some of the greatest challenges facing society.

Girls driving change

A £1.5 million, two-and-a-half-year long project from the World Association of Girl Guides and Girl Scouts (WAGGGS) and Save the Children UK empowered girls in Uganda and Jordan to plan and lead solutions to end gender-based violence in their homes and communities. The project funded 70 girl-led initiatives and involved 2,500 girls.

Funds awarded from Postcode Global Trust.



Kinship provides financial, legal, practical and emotional support and advice to grandparents, siblings and other relatives and friends who help raise children when their parents are not able to.

Walrus counting from space

A WWF-UK project, with the British Antarctic Survey, sought out volunteers to count walrus using satellite images. The project aims to discover how climate change will impact walrus – the marine mammals rely heavily on sea-ice, which has been in sharp retreat. Citizen scientists around the world have already counted more than 600,000 images.

Funds awarded directly as part of the Postcode Climate Challenge.

Getting PPE to frontline workers

£100,000 for health charity Kids Operating Room helped ship 25 million PPE items, including masks, goggles and visors, to help protect frontline healthcare workers against Covid in three African countries so they can treat patients safely.

Funds awarded from Postcode Innovation Trust.

UK's first ever bison ranger recruits

The UK's first-ever bison rangers were appointed to look after the herd at Wilder Blean, a pioneering rewilding mission led by Kent Wildlife Trust. Two rangers were selected from over 1,000 applicants from around the world, as part of the £1.5 million rewilding project using bison to help restore degraded woodland ecosystems and lost species.

Funds awarded from Postcode Innovation Trust.

"I've always wanted to see our ecosystems and habitats in the healthiest possible conditions. The concept of bison, these ecological engineers coming back, is captivating and an exciting first that could start a domino effect when it comes to ecosystems like the Blean."

Tom Gibbs

Bison ranger, Wilder Blean project



Thousands answered the call to search for walrus in satellite images to improve understanding of how the walrus will be affected by the climate crisis.



A shipment of vital personal protective equipment means healthcare workers in Zambia can treat and care for patients more safely.



Donovan Wright, left, and Tom Gibbs, right, are the UK's first ever bison rangers, playing a key role in the £1.5 million Wilder Blean project.

Creating experiences for all

Scotland's first design museum, the V&A Dundee, works to bring design into the lives of everyone. Funding helped run sensory-friendly days for major new exhibitions, providing a safe, relaxing environment for people with sensory needs, including autism, sensory processing differences, or profound and multiple learning disabilities.

Funds awarded from Postcode Culture Trust.

Caught on camera

In Guinea, three endangered forest elephant calves were captured on Fauna & Flora International (FFI) camera traps, marking a major boost for this critically endangered species. Players are helping to protect the forest corridors necessary for the survival of the forest elephant, only recently assessed as a separate species to the African savannah elephant.

Funds awarded from Postcode Green Trust.

Close to £150 million has gone to **2,500 charities** working to address environmental and climate-related issues in the past five years, thanks to players.

"The climate and nature emergencies facing us are inextricably linked. By working together, we can protect vital forests like Ziama in Guinea, and the communities and wildlife that depend on them... and so ultimately fight these two global emergencies."



Laura Chow
Head of Charities,
People's Postcode Lottery



Sensory-friendly days give visitors with a range of complex needs the chance to experience the museum in a totally different way.



Images like these are a real cause for celebration and suggest the forest elephant population is growing as forest habitat is better protected.

Green-minded grandparents

In a recent survey, 91% of British grandparents told us they are concerned about the impacts of climate change and how it is going to affect future generations. This level of concern is equal to that of their younger millennial and generation Z counterparts.

Our research also revealed that 81% of grandparents believe the climate emergency should be treated as an urgent problem that needs to be resolved, compared with 79% of 16 to 34-year-olds.

The survey is part of a report called From Attitudes to Action: Environmental concerns and behaviours in Britain. Commissioned by People's Postcode Lottery in partnership with Friends of the Earth and The Wildlife Trusts, conducted by Survation and designed by Diffley Partnership.

"Becoming a grandparent shouldn't mean fearing for the future of your grandchildren, but I do. I worry they'll be the first of many generations forced to adapt to a broken and hostile world."

Jacky Doran
Gran and climate activist

Postcode Climate Challenge

The 12 charities* making up the £24 million Postcode Climate Challenge delivered some amazing results in 2021.



Better justice rights for

440+
million people

140,000
miles
of public access
routes upgraded



LANDSCAPES in
5 AFRICAN
countries protected



1+ MILLION
trees planted



2+ MILLION
people tackled
PLASTICS

75%

of local councils
drew up
action plans



7,500km²
wilderness protected

*12 supported charities: African Parks, Canal & River Trust, ClientEarth, Ellen MacArthur Foundation, Fauna & Flora International, Friends of the Earth, Greenpeace, Ramblers, WaterAid, The Wildlife Trusts, Woodland Trust and WWF-UK.

Helping nature blossom in cities

Dozens of blossoming trees will be planted in towns and cities across the country to improve access to nature for all. This National Trust project will create a UK equivalent of Japan's famous Hanami, the traditional custom of enjoying the beauty of blossom trees.

It has twin ambitions: to support the trust's planting of 20 million trees by 2030 to tackle climate change, and to create new homes for nature and increase green space access which is vital for physical and mental wellbeing.



Communities will have more access to nature through the creation of green spaces and blossom tree circles.

Players are helping the **Thomson Reuters Foundation** shine a light on slavery, uncover LGBT+ stories and expand its hard-hitting coverage

With players' support, **Care International** is working to reduce poverty and gender inequality around the world

The Zoological Society of London has been able to make significant gains in conservation, science and education in 2021, thanks to players

BookAid International reached 71 schools in Malawi with 24,000 books to establish school libraries to help transform the education of thousands of pupils

We are doing more

The charity lottery reforms which came into force in July 2020 increased the annual sales limit from £10 million to £50 million, and the per-draw sales limit from £4 million to £5 million.

The positive ripple effects are already being felt throughout the sector. Most importantly, the new sales limits are unlocking additional vital funding for charities, meaning they can do even more to improve people's lives and communities.

A People's Postcode Lottery report showed that in 2021, the changes resulted in an extra £31 million in one-off funding awards for 61 charities. Funds going to smaller, local good causes more than doubled to £17 million.

The 1% increase in percentage of ticket sales (from 32% to 33%) made possible by reforms will result in around £5 million extra in funds per year, based on current sales levels.



Street League received £800,000 in 2021 alone. Funds awarded through Postcode Active Trust.

"Youth unemployment is at a record high, the Covid pandemic has deepened poverty and young people in deprived communities face heightened disadvantage. Thanks to our experience and proven impact, we can make a tangible difference to thousands of young people. The charity lottery limit being raised further will help us – like many charities – to respond to the tidal wave of need caused by the pandemic."

Dougie Stevenson
Managing Director, Street League



John Whittingdale MP, formerly Minister of State for Media and Data in the Department for Digital, Culture, Media and Sport (DCMS) with responsibility for lotteries and gambling.

"I'd like to thank the players, the charities and all those involved in People's Postcode Lottery for all that you do which is making such an important difference to communities across Britain."

John Whittingdale MP
Lottery Minister 2020-21



REFORMS TO DATE: BENEFITS IN NUMBERS

32% to 33%

OF TICKET SALES
TO GOOD CAUSES

Increased charitable
contribution from June 2021

58 > 20 Trusts

SIMPLER DRAW STRUCTURE
WITH FEWER CHARITY
LOTTERIES MEANS
ADMIN SAVINGS

£31.05 million

ONE-OFF EXTRA AWARDS
for 61 regularly supported
beneficiary charities in 2021

Double the money

for smaller good causes
through Community
Programmes Trusts

76% INCREASE IN FUNDING

for Partnership
Programmes in 2021

The home of big wins

Every day, neighbours in postcodes across England, Scotland and Wales celebrate a win with People's Postcode Lottery.

Over 3.4 million players won in 2021 and shared a total of nearly £189 million in prizes between them.

Prizes usually range from £10 to £30,000, right up to a share of the monthly £3 million Postcode Millions prize.

2021's prize plan had £30,000 to be won by a postcode every day across nine months of the year. It also boasted larger monthly Postcode Millions prizes of up to £8 million.

December had the greatest single monthly prize pot on record with over £25 million in prizes. In addition, our non-cash prizes offered winners a range of bestselling books and home gadgets.

While the pandemic might have stopped the People's Postcode Lottery ambassadors from knocking on quite as many doors and ringing as many bells as they would have liked, the good news still made it to all our winners.

Where restrictions allowed, ambassador visits with our winners were carried out safely and responsibly.



411 winners shared a £7.3 million prize in October.



In November, six players won £210,000 between them.



Two ticket winner Gary Summers, top middle, won with his neighbours.

In August, Gary Summers got a knock on his door and won £60,000.

"It was the most amazing moment of my life. It's absolutely life changing, words can't describe how amazing it actually is."



Postcode Millions prize winner, Rachel won a total of £756,150. She won £378,075 for each ticket played with.

Rachel won over three quarters of a million pounds in July's Postcode Millions.

"Never in a million years did I think this would happen – it's incredible. We would love to island hop around Hawaii, that's always been a pipe dream, but we can do that now!"

Our winners

Meet some of our Postcode Lottery people who celebrated a win.

Community hero, Kathleen Scott

Kathleen, a grandmother and retired factory worker, won £140,909 in August. Named a hero by her local community, Kathleen spent the pandemic sewing scrubs for NHS staff and food shopping for vulnerable people. Kathleen ensured others shared in her good fortune, pledging to buy a defibrillator for her local Post Office.



Covid community hero Kathleen and husband Alan.

Big winner, Hannah Leggat

The biggest winner of 2021 and one of the biggest ever in Postcode Lottery history was Hannah Leggat, a care home manager from Cardiff. She won nearly £1 million in November after tripling her winnings to £930,000 by playing with three tickets. The “life-changing” win for Hannah and husband Matt followed a difficult year with the couple both losing a parent. The money meant Hannah could provide a headstone for her mother and support a pancreatic cancer charity with a donation.



Hannah is one of the biggest ever winners with People's Postcode Lottery, winning £930,000 in total. She won £310,000 for each ticket played with.

IVF joy, Ellie and Cameron Hinton

£30,000 winners Ellie and Cameron met while working together delivering babies eight years ago. Going through their own fertility journey, they welcomed daughter Harriet in early 2021 following a successful round of IVF. The win means the couple now have enough money for further treatment and can explore their dream of giving Harriet a little brother or sister by trying for a second IVF baby.



The couple dream of a second IVF baby after £30,000 win.

Ambassadors



Danyl Johnson



Jeff Brazier



Judie McCourt



Matt Johnson



Fiona Phillips

Our team

People's Postcode Lottery's core values

Selling more tickets to help raise even more funds for good causes is what we do, and our culture and team are how we do this. We are led by four core values.

Fun
Sharing
Courageous
Sustainable



Team Day 2021 was an opportunity for the team to come together and celebrate all that had been achieved.



Our team deliver good news to winners up and down the country.

Staying connected

Our sense of team and belonging is strong and despite the challenges thrown up by the pandemic, we have stayed connected to each other and our mission.

The health and wellbeing of those who make People's Postcode Lottery what it is has always been a priority. Over the past few years, it has become an even greater one for us. New and ongoing activities and initiatives have helped support and meet our team's needs so they could continue their work which makes a difference to charities, people's lives and communities in Britain and beyond.



Together we make a difference.



#1
Best Staff
Wellbeing Initiative
Chartered Institute of
Public Relations
Excellence Awards
2021

53%
female

48%
male



385
team
members



46
new team
members
joined us
in 2021



53 team members
celebrated a **5-year**
work anniversary



9 team members
celebrated a **10-year**
work anniversary



We are committed to personal development and career growth.

Growing our team

We are big believers in supporting people to reach their full potential. We invest up to 4% of salaries in training and development opportunities to stretch and grow team members, whatever the stage of their career.

For Learning at Work Week in May, team members took part in a programme of learning sessions and knowledge sharing activities which covered everything from sustainability to life-saving skills.

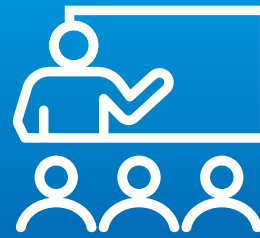
Diversity and inclusion

People are at the heart of what we do.

Whether it's our team, our players, or the thousands of good causes supported, our aim is to play our part in creating a fairer, more equal world.

We are open to ideas and are committed to creating a culture that is inclusive, representative and celebrates diversity in everyone.

But we are not perfect. We will always strive to do better – that's just who we are.



121 courses were delivered through **Lottery Academy**, our in-house training programme



17 new managers completed our **manager training programme**

EDI Champions

Equality, diversity and inclusion is all of our responsibility at People's Postcode Lottery.

In 2021, we established a team to support our actions towards creating a more inclusive and diverse People's Postcode Lottery. Made up of team members from every area of the business, our EDI Champions group helps drive our commitments and journey to embed equality, diversity and inclusion in everything we do.

Doing business sustainably

We care about how we operate. Good Operations is our commitment to doing so in a sustainable and responsible way.

Customer-focused campaigning

Our customers are our players. We aim to engage them in our mission – we show them the incredible things achieved by charities and good causes around the world and thank them for their support.

Funding for resilience

A unique model of unrestricted, flexible, long-term funding gives our supported charities breathing space to build capacity and resilience and focus on growing their services.

Operating with integrity

We strive to do the right thing and be the best we can possibly be. We are committed to integrity and transparency across all areas of business. Our conduct is built around industry best practice. We go above and beyond to protect personal data and ensure safe play.

A great place to work and meet

Our people are our greatest strength. We create a safe and inspiring workplace where they can be their best. We focus on their well-being and invest in their development. We aim to maintain a thriving, equal and respectful environment, guided by our values and shaped by our team.

Relationships built on trust and transparency

Our relationships with funded charities, our team and our suppliers are built on trust – and a code of conduct based on transparency and fairness. We work closely with our partners to analyse and better understand our areas of impact.

More on sustainability
postcode lottery.info/about-us/sustainability





Healthy play

Charity lotteries are recognised as low risk, differentiating People's Postcode Lottery from other gambling products. Responsibility is central to the way we work, with integrity underpinning everything we do. We fully stand by our license commitments to protect younger and potentially vulnerable players. That is why in July 2021, we voluntarily increased the minimum age to play People's Postcode Lottery from, the legally possible, 16 years old to 18 years old.

Lower emissions, increased efficiency

The move to online and video meetings has translated into lasting change for the People's Postcode Lottery public affairs team and an important area of its work with politicians.

All MP-hosted Constituency Funding Workshops, which provide local charities with funding application know-how, will remain online. By going virtual, the team has cut travel, reduced associated emissions, boosted efficiency and increased overall attendance, meaning even more local good causes can find out how funds raised by players can make a difference to them and the communities they serve.



Britain-wide funding workshops support hundreds of local organisations and community groups in applying for funding. A permanent move to online workshops has reduced emissions and increased efficiency.

Financial Reporting

Our performance in 2021 (in £1,000)

	Share of total			
	2021		2020	
Ticket Revenue	533,846	100%	487,381	100%
Charities	173,522	32.5%	155,961	32%
Prizes	213,538	40%	194,952	40%
PPL Operator Revenue	146,785	27.5%	136,466	28%

Postcode Trust	2021
People's Postcode Trust	2,602
Postcode Active Trust	6,940
Postcode Animal Trust	13,014
Postcode Care Trust	9,543
Postcode Children Trust	14,749
Postcode Community Trust	2,602
Postcode Culture Trust	7,808
Postcode Earth Trust	14,749
Postcode Education Trust	13,014
Postcode Global Trust	8,676
Postcode Green Trust	6,940
Postcode Innovation Trust	6,940
Postcode International Trust	13,014
Postcode Justice Trust	13,014
Postcode Local Trust	2,602
Postcode Neighbourhood Trust	3,470
Postcode Places Trust	2,602
Postcode Planet Trust	13,014
Postcode Society Trust	3,470
Postcode Support Trust	14,749
Total	173,522

Funds for charities and good causes

GOOD CAUSE		AMOUNT (£)			
People's Postcode Trust					
1st Mostodloch Scout Group	5,488	East Renfrewshire Citizens Advice Bureau	18,700	Kyle of Sutherland Development Trust	20,000
A Moment's Peace Theatre Company	19,928	Edinburgh Headway Group	9,500	Laide & Aultbea Community Woodland (LACW)	10,086
Abbeyhill Colony of Artists	2,000	Eildon West Youth Hub - TD1 Youth Hub	12,585	LEAP Sports Scotland	13,134
Aberlour Child Care Trust	20,000	Elder Voice	15,280	Learning through Landscapes	122,100
Absolute Classics	3,035	Ellie's Community Voluntary Group	1,955	Localgiving Foundation	170,630
Acharacle Community Company	19,719	F.R.I.E.N.D.S.	4,689	Lochgelly Band	20,000
Active Life Club (ALC) SCIO	13,130	Families First St Andrews	20,000	Lomond Mountain Rescue Team	10,000
Alyth Development Trust	14,500	Feeling Strong SCIO	12,120	Mauchline Community Action Group	16,505
AR26 Charity	15,888	Financial Fitness Resource Team	19,459	Mid Deeside Community Trust	9,487
Bonnymuir Green Community Trust	20,000	Fool On	4,140	Monifieth Befriending Scheme (Aka Monifieth befrienders)	20,000
Braemar Community Limited	18,000	Forres Area Community Trust	20,000	Moray Fresh Start SCIO	4,998
Bridges Project	18,613	Fort William Marina & Shoreline Community Interest Company	2,000	Moray Women's Aid	11,662
Bridgeton Citizens Advice Bureau	19,689	Glasgow's No. 1 Baby and Family Support Services	20,000	musicALL	20,000
Callander Youth Project Trust	18,313	Glasgow's Pre Loved Uniforms	13,670	Musicrange	18,000
Cancer Support Scotland (TAK TENT)	20,000	Glengarry Community Woodlands	15,010	Newmilns Snow and Sports Complex	20,000
Care for Carers	10,000	Glenkens Community & Arts Trust	13,355	Ocean Youth Trust Scotland	20,000
Children with Cancer & Leukaemia Support & Advice for Parent	7,500	Govan Youth Information Project	20,000	On Course Foundation	10,498
Church House, Bridgeton [SCIO]	16,880	Grampian Opportunities (SCIO)	18,511	One Edinburgh	1,940
Citizens Rights Project	2,000	Grey Matters Active Ageing	20,000	Outspoken Arts Scotland Limited	3,740
Climate Action Strathaven	19,600	Grimsay Community Association (GCA Centre)	4,802	Pain Concern	10,000
Community InfoSource	15,573	Haddo Arts	8,798	Parkhead Citizens Advice Bureau	18,450
Community Links Scotland	17,018	Hawick Men's Shed	8,146	Parklea Association Branching Out Ltd	17,580
Connect Berwickshire Youth Project	11,252	Heart of Argyll Wildlife Organisation	12,000	Pasda - Parents of Autism Spectrum Adults	20,000
Dads Rock	19,872	Hebridean Whale and Dolphin Trust	20,000	Peacock Visual Arts Ltd	19,902
Dalgety Bay Art Club	1,657	Hebrides Mountain Rescue Team	20,000	Peeblesshire Foodbank	17,200
Developing Potential SCIO	14,650	Helensburgh and Lomond Carers	19,839	Pentland Gymnastics Club	1,803
Differabled Scotland	14,800	Highland One World SCIO	19,996	Play Therapy Base Limited	16,815
Different Visions Celebrate	10,000	Home-Start Aberdeen	11,740	PLUS (Forth Valley) Limited	17,175
Donside Trampoline Club	2,000	Home-Start East Lothian	19,932	Polish Association Aberdeen	12,800
Dr Bell's Family Centre	19,020	Hope Amplified	14,146	Pregnancy & Parents Centre	8,002
Dunbeath & District Centre	11,360	Hopetoun House Preservation Trust	19,950	Projekt 42	20,000
Dundee Bairs	15,000	Icky Arts C.I.C.	2,000	Reach4Reality SCIO	20,000
Dundee Youth Music Theatre	1,800	Indepen-dance	18,014	REAP	16,500
East Ayrshire Churches Homelessness Action	8,190	Irvine and Dregghorn Brass	11,219	Red Note Ensemble Ltd	19,998
East Dunbartonshire Women's Aid SCIO	19,354	Kinlochleven Community Trust	9,682	Renfrew YMCA SCIO	19,997
		Kippen Sports Development Ltd	10,110	Richmond's Hope	20,000
		Kyle & Lochalsh Community Trust	20,000	Ritual Abuse Network Scotland	10,000

Road to the Isles Facilities Group SCIO	13,066
SAY Women	19,933
Scottish Crofting Federation	17,310
SHRUB Cooperative (formerly The Swap & Reuse Hub Co-op)	20,000
Signpost International SCIO	19,800
Smalls for All	8,000
Smart Works Edinburgh	15,200
SongWave Community Choir	2,000
St Andrews Environmental Network	11,625
St David's Brass Band SCIO	13,693
Stepping Out	15,435
Stranraer Water Sports Association	7,840
Strengthening Communities for Race Equality Scotland – SCORE	19,951
Sunrise Partnership SCIO	5,000
Sunshine Wishes Childrens Charity	5,000
Taigh Chearsabhagh Trust	20,000
Tailor Ed Foundation	15,000
Tarland Development Group	2,809
Taymara	9,984
Team Jak Foundation	20,000
Ten for Zen	2,000
The Association for the Protection of Rural Scotland	20,000
The Befriending Association CIC	2,000
The Bridge Community Project	16,200
The Community Bureau SCIO	18,408
The Cottage Family Centre	19,503
The Empower Project	2,610
The Everyone Project SCIO	19,500
The Froglife Trust	18,868
The Glasgow Barons	19,300
The Health and Wellness Hub	13,020
The Howietoun Heritage and Nature Sanctuary Charitable Trust	18,700
The Karate Initiative	7,450
The Linda Tremble Foundation (SupportED)	12,471
The Moira Anderson Foundation	16,524
The Montrose Playhouse Project SCIO	19,974
The Orchard Project	20,000
The Polar Academy	5,725
The Salisbury Centre	19,844
The Scottish Centre for Personal Safety	17,000

The Urban Fox Programme	19,200
Together For Better Life	19,992
Transition Edinburgh South (Scotland) Limited	13,900
Trauma Healing Together	19,872
TURF	17,170
Venture Scotland	20,000
Voluntary Action Orkney	17,718
Whitlawburn Community Resource Centre	18,551
Women's Business Station CIC	2,000
You're Never Too Old	13,616
Youth 1ST SCIO	6,860

Postcode Active Trust

Cruyff Foundation	450,000
Ellen MacArthur Cancer Trust	450,000
Greenhouse Sports	450,000
Lord's Taverners	800,000
Newcastle United Foundation	450,000
Street League	800,000
The Ramblers	2,500,000
Tottenham Hotspur Foundation	600,000

Postcode Animal Trust

Battersea	700,000
Cats Protection	1,283,000
Dogs Trust	2,525,000
Medical Detection Dogs	350,000
PDSA	2,000,000
Riding for the Disabled Association	500,000
The Guide Dogs For The Blind Association	1,295,000

Postcode Care Trust

Alzheimer's Society	550,000
Breast Cancer Now	2,000,000
Carers Trust	600,000
Dementia Adventure	400,000
Maggie's	2,515,000
Royal National Institute of Blind People	1,945,000

Postcode Children Trust

Barnardo's	2,563,000
Children 1st	750,000
Children North East	400,000
Daisy Chain	400,000
Girlguiding	2,573,000

Magic Breakfast	400,000
NSPCC	2,500,000
Place2Be	400,000
Whizz-Kidz	400,000
Young Lives vs Cancer	2,500,000

Postcode Community Trust

Abercarn United Girls AFC	639
Abergavenny Community Trust	18,906
Action in the Community To Support North Wales and Cheshire	15,000
Adenydd	19,990
Advance Brighter Futures Wrexham	20,000
AFAN ARTS	19,884
African Community Centre	19,426
Age Connects Cardiff and the Vale	15,000
Amman Valley Trotting Club LTD	1,912
Anthem Music Fund Wales	17,260
Ardour Academy	1,995
Arts Abergavenny Community Interest Company	2,000
Asylum Justice	20,000
Autism Wellbeing CIC	2,000
BAD Bikes Youth Project	19,501
Bangor on Dee Sportsfield Committee	14,000
Benefit Advice Shop	18,928
Bethesda Neyland Men's Shed	11,987
Betws Family Centre	20,000
Bike to the Future	10,970
Bitesize Youth Theatre	2,000
bluegreencymru	2,000
Bracken Trust Limited (Cancer Support Centre)	8,050
Brecon and District Mind	17,641
Brenin Adventures	2,000
Brighter Futures	19,968
Brynaman Lido Limited	1,760
Brynhfryd Bowls Club	2,000
Builth Bike Bash	20,000
Buttle UK	100,000
Bwyd am Byth CIC	2,000
Cae Tan Community Supported Agriculture Ltd	2,000
Caerphilly Miners Centre for the Community	10,800
Call of the Wild Development Trust CIC	1,970
Cardiff Valkyries	1,986

Caru Amlwch	2,000	Llandysul family centre	10,895	RTB Ebbw Vale Bowls Club	1,582
Celf-Able Limited	2,000	Llanelli Railway Goods Shed Trust	9,956	Sandy Bear Children's Bereavement Service	19,601
Celfogwmpas	9,869	Llanferres Playing Field and Recreation Association	11,632	Shalom House	19,825
Chinese In Wales Association	20,000	Localgiving Foundation	170,630	Sight Cymru	19,500
Circus Eruption	20,000	Melting Point	2,000	Sistema Cymru - Codi'r To	20,000
Climate and Community	14,940	Mental Health Football in Wales	20,000	Skills & Volunteering Cymru (SVC)	18,511
Coed Eva Athletic FC	2,000	Mental Health Swims	2,000	South Ridgeway Community Association	20,000
Coeden Fach Community Interest Company	2,000	Menter Bro Dinefwr	2,000	Span Arts Limited	20,000
Conwy mind	19,875	Mid Border Community Arts Ltd	20,000	Sparkle (South Wales) Limited	15,513
CRAI Scout District Council	20,000	Milford Haven Sea Cadet Corps	19,150	St David's Diocesan Council for Social Responsibility	19,568
Croesyceiliog Athletic FC	2,000	Milford Haven Swimming Squad	1,920	Stephens and George Centenary Charitable Trust	20,000
Crymych FC	910	Mixtup	10,312	Stormz Community For Musical Arts CIC	1,950
Cwtch Baby Bank	5,735	Morfa Family Centre	20,000	Stow Park Community Centre	6,075
Cycling 4 All	4,995	Mothers Matter CIC	2,000	Sub-Sahara Advisory Panel	17,500
Cymdeithas Eryri the Snowdonia Society	20,000	Muddy Care CIC	2,000	Surfability UK CIC	1,880
Daring to Dream	10,521	National Youth Arts Wales	4,900	Swansea Canal Society	20,000
Dewis Ltd	19,490	Neath-Afan Gymnastics Ltd	2,000	Swansea Carers Centre	19,993
Erlas Victorian Walled Garden	19,760	Neptune's Army of Rubbish Cleaners (NARC)	9,935	Taking Flight Theatre Company	19,000
Family Friends	20,000	New Horizons Mental Health CIO	15,468	The Aloud Charity	8,014
Fishguard and District Local History Group/Hanes Abergwaun	745	Neyland Rowing Club	1,720	The Autism Directory	14,264
Forest School SNPT	19,660	North Wales Women's Centre Ltd	20,000	The Bridge mentoring Plus Scheme	16,038
Friends of Bailey Hill/Ffrindiau Bryn Y Beili	2,588	O Ddrws I Ddrws	19,740	The Bryntail Cottage Charity	20,000
Friends of Montgomery Play Park	2,000	Oasis Cardiff	20,000	The Centre for Building Social Action Ltd	19,820
Friends of Saint Mary's Gardens	2,000	Oasis One World Choir	1,750	The Club House Management Committee	15,059
Friends of the City and County of Swansea (Botanical Complex)	17,722	Operasonic Cyf	14,800	The Community Impact Initiative CIC	2,000
Garnant Family Centre	16,284	Parkfields Community Centre	17,980	The Elemental Adventures Project CIC	2,000
Golden-Oldies	15,000	Paul Popham Fund, Renal Support Wales	20,000	The Environment Centre Ltd	17,058
Gowerton Cricket Club	19,512	Pembrokeshire Care Society	19,980	The Gellideg Foundation Group (Community Association)	19,674
Greenfingers Charity	18,500	Pembrokeshire Coast National Park Trust	20,000	The HangOut	10,000
Hay Theatre CIC	2,000	Pembrokeshire FRAME	20,000	The Melville Centre for the Arts Community Interest Company	2,000
Hidden Abilities	1,960	Pencader Family Centre R/C 1092027	20,000	The Parish Trust	20,000
High St Fitness and Wellbeing	13,000	People and Work Unit	10,500	The Pembroke Dock Heritage Trust Ltd	9,936
Incredible Edible Carmarthenshire	1,990	Play Radnor/Chwarae Maesyfed	19,904	The Play and Leisure Opportunity Library	16,987
Keep Children Safe Online	1,840	Pontardawe Arena	1,532	The Really Amazing Charity	10,000
Kenfig Hill RFC	2,000	Pontarddulais Town FC	19,668	The Shared Earth Trust	20,000
Kidney Wales Foundation	7,840	Powys Pets In Need	4,000	The Swansea Wellbeing Centre	2,000
Learning through Landscapes	122,100	Pwyllgor LLes Tegryn Welfare Committee	2,000	The Wilderness Trust	20,000
Linden Church Trust	19,924	RCV UK	16,679	Together In Dementia Everyday	20,000
Little Lounge	19,426	Read for Good	19,034	Upper Colwyn Bay Community Centre Group Ltd	18,634
Llanddulas Youth & Community Centre	18,574	Refugee Kindness - North Wales	18,000	Valley Veterans	20,000
Llandissilio Playing Fields Association	20,000	Refurbs Flintshire	12,091		
		Rossett & Burton Village Hall Management Committee	10,000		

Volcano Theatre	8,444
Welsh Dance Theatre Trust Ltd T/A Rubicon Dance	20,000
Welsh Refugee Council	18,896
Wild Elements	2,000
Wild Ground	19,984
Wrexham Youth & Play Partnership	19,284
write4word CIC	2,000
XLWales	5,603
YMCA Port Talbot	15,000
YourNorth Veteran Support CIC	1,802

Postcode Culture Trust	
Edinburgh International Book Festival	350,000
MAC Birmingham	350,000
National Galleries of Scotland	500,000
National Museum Wales	350,000
National Museums Scotland	350,000
Science Museum Group	525,000
Sistema Scotland	350,000
V&A Museum of Design Dundee	350,000
Youth Music	2,500,000

Postcode Earth Trust	
Canal & River Trust	2,500,000
ClientEarth	1,000,000
Ellen MacArthur Foundation	1,000,000
Friends of the Earth	2,589,000
Greenpeace Environmental Trust	1,000,000
Keep Britain Tidy	550,000
Kent Wildlife Trust	350,000
National Trust	725,000
National Trust for Scotland	375,000
The Conservation Volunteers	550,000
Yorkshire Dales Millennium Trust	375,000

Postcode Education Trust	
AfriKids	425,000
Book Aid International	425,000
Save the Children	2,594,000
Theirworld	2,500,000
Unicef UK	2,500,000
War Child	2,515,000

Postcode Global Trust	
Amref Health Africa UK	100,000
APOPO	750,000
Médecins Sans Frontières	850,000
Ndlovu Care Group	425,000
Sightsavers	2,500,000
WaterAid	2,519,000

Postcode Green Trust	
Fauna & Flora International	1,000,000
Royal Botanic Garden Edinburgh	375,000
Royal Botanic Gardens, Kew	375,000
The Royal Parks	750,000
Woodland Trust	2,515,000

Postcode Innovation Trust	
Arkbound Foundation	100,000
Bannockburn & Eastern Villages Community Hub SCIO	150,000
Blackburne House Ltd	100,000
Cook for Good	160,000
Esmée Fairbairn Foundation	50,000
Expert Impact	192,000
FareShare	125,000
Football Beyond Borders	250,000
Goldfinger	200,000
Hatch	250,000
Hestia Housing and Support	655,000
Impact Hub Kx Programmes CIC	53,000
Kids Operating Room	100,000
Lancashire Wildlife Trust	880,000
Newcastle upon Tyne YMCA	250,000
School for Social Entrepreneurs	200,000
Scottish Edge	30,000
Seable limited	100,000
Showcase the Street	250,000
Social Enterprise UK	200,000
Social Investment Scotland	70,000
St John Ambulance	1,000,000
The Jericho Foundation	250,000
The Trussell Trust	125,000
The Wildlife Trust for Bedfordshire, Cambridgeshire and Northamptonshire	250,000
UK Youth	650,000

Postcode International Trust	
Action Against Hunger	425,000
ActionAid	2,594,000
British Red Cross	2,538,000
CARE International UK	650,000
Mary’s Meals	425,000
Oxfam GB	2,500,000

Postcode Justice Trust	
Amnesty International UK	2,594,000
Global Witness	400,000
Helen Bamber Foundation	125,000
Human Rights Watch	800,000
Liberty	450,000
Peace Direct	425,000
Plan International UK	2,584,000
The Sentry	600,000
Thomson Reuters Foundation	600,000
Women for Women International	450,000

Postcode Local Trust	
acta community theatre agency ltd	10,890
Action for M.E.	10,912
African French Speaking Community Support (AFSCS)	12,950
Approach Supporting Your Life Your Way	20,000
Avon Needs Trees	20,000
Avon Vale Tennis and Croquet Club	14,649
Axminster and Lyme Cancer Support	5,000
Be Festival CIC	1,800
Berkeley Educational Swimming Trust	20,000
Beyond the Horizon Charity	20,000
Blandford Youth Advice & Information Centre (known as TREADS)	7,864
Blessed 2 Bless Community Project	8,620
Bluebell Care Trust	18,000
Bournemouth BMX Club	2,000
Braunton Wanderers FC	1,000
Bridgwater United Community Sports Trust	2,000
Brierley Hill Babybank	14,723
Bristol and Bath Parks Foundation	16,085
Brixham Admiral Swim Company Ltd	16,500
Care Home Volunteers	10,000
CHAOS Cornwall CIC	1,995

Cheltenham Housing Aid Centre	19,760
Citizens Advice - Bath and North East Somerset	20,000
Citizens Advice in East Dorset and Purbeck Ltd	18,508
Citizens Advice Torridge, North, Mid & West Devon	19,996
CLEAR Emotional Trauma and Therapy Specialists	20,000
Coldharbour Mill Trust Ltd	20,000
Community Council of Shropshire	18,043
Cotswold Friends	20,000
Coventry Migrant Womens Houses	1,220
Cricklade Fencing Club	2,000
Cultivate Cornwall CIC	1,976
Dartmoor Activity Centre Broadleas	20,000
Devon Mammal Group	7,378
Disability Solutions West Midlands	19,984
DIYYA	17,480
DORCAS (Daughters, Optimistic, Respect, Courage, Assurance & Support	10,000
Droitwich Theatre and Arts Club Ltd	20,000
ECHO for Extra Choices in Herefordshire Limited	19,856
ecobirmingham	19,000
Ekta-Unity Voluntary Organisation	19,976
Empire Fighting Chance	18,536
Energy Sparks	20,000
Every Cloud Play & Creative Arts Therapy CIC	2,000
Exim Dance Company CIC	1,890
Fair Action	9,900
Fair Shares Gloucestershire	17,131
Faithworks Wessex (FWW)	20,000
Families in Grief (FIG)	9,300
Folio Theatre	16,875
Footsteps Counselling and Care	20,000
Forest of Hearts	19,968
Friar Park Millennium Centre	17,264
Friends of Shillingford Wood - CIO	10,000
GL Communities	19,480
Gloucestershire Bundles	11,480
Goals Beyond Grass	20,000
Good Afternoon Arts & Crafts	635
Hawks Green, Heath Hayes & Wimblebury Environmental Group	2,000
Headway North Staffordshire (Head Injuries Association) Ltd	20,000
Hearts and Hands Stafford	2,000

Hlgh Bickington Playing field Association	19,903
Higham Lane Leisure Association	8,019
Home-Start Birmingham Central and South-West	19,923
Home-Start Birmingham North West	19,962
Home-start Kernow	20,000
Home-Start Staffordshire Moorlands	16,000
Honiton Community Advice Service	2,000
Hope Support Services	19,599
In Charley's Memory	19,351
Insight Gloucestershire	20,000
KEY4LIFE CIO	20,000
Langtree Parish Hall	7,872
Learning through Landscapes	122,100
Live Music Now (South West)	13,520
Llanymynech Amateur Dramatic Society	2,000
Loaves N Fishes (known as Provision House)	18,655
Localgiving Foundation	170,630
Lyme Regis Development Trust	19,852
Madley Environmental Study Centre	4,880
Malachi Community Trust	19,749
Malvern Youth and Community Trust	20,000
Manaton and East Dartmoor Theatre	18,500
Manor Park Sailing Club	2,000
Mayes Creative Limited	2,000
Memory Matters Foundation	19,970
Mentoring Plus	16,017
Mission Diverse CIC	2,000
Music for Wellbeing 2016 CIC	2,000
MYTIME	15,000
Nadder Community Energy (NCE)	2,000
Nature's SAFE	10,000
Network of Wellbeing	19,579
North Devon Debt Centre	561
Northern Slopes Initiative	1,999
Oasis Community Hub: Warndon	17,777
Open Harmony CIC	2,000
Open Minds Active	2,000
Our Space (Staffs) Ltd	14,225
Ovacome	17,420
Pandas Foundation	20,000
Pant Memorial Institute	20,000
Par Bay Community Trust	20,000

Pat Benson Community Sports Foundation	19,995
Paul's Place (South West)	14,877
Penhaligon's Friends	11,940
Perkisound CIO	15,100
Poole Communities Trust	19,743
PramaLife	19,525
Prime Skatepark	19,497
Project MAMA	12,321
Rage Arts	19,720
RicNic Trust	6,500
Rising Girl	19,958
Safe And Sound Dorset	19,776
Salus Fatigue Foundation	19,889
Sandwell Parents for Disabled Children	19,840
Sensory Trust	14,747
Sexual Trauma and Recovery Services - Dorset Rape Crisis	18,150
Shropshire Union Canal Society	13,335
Sight Support West of England	6,874
Somerset and Wessex Eating Disorder Association	10,413
Somewhere House (Somerset) Limited	18,990
SOS Silence of Suicide	20,000
Soundhouse Brass	19,974
Soundwell Music Therapy Trust	10,000
Square Peg Activities Limited	19,603
St Sampson's church South Hill	2,000
Tectona Trust Ltd	18,500
Tewkesbury Sea Cadets	6,000
The 2 Minute Foundation	19,999
The Bromsgrove Youth and Community Hub	17,640
The Burrough Harmony Centre	14,700
The Cracked Slipper Company	8,864
The Dorchester Trust for Counselling and Psychotherapy	5,000
The Forget Me Not Chorus (FMNC)	19,319
The Gina Project CIC	1,972
The Hugs Foundation	10,000
The Keepers - Wotton Area Community Hub	5,000
The King's Way Church	10,400
The Life Community (TLC)	13,669
The Lily Mae Foundation	14,584
The Old Store Studio	1,915
The Peter Pan Centre Ltd	17,799

The Southmead Project	19,768
The Springhead Trust Limited	20,000
The Village (Village of Forgiveness)	16,224
The Viney Hill Christian Adventure Centre	20,000
Totnes Rural Area Youth Engagement project	17,520
Toucan for Children CIO	20,000
Transition Town Totnes	18,422
Ubley Play Area	11,589
Water Lily Project	19,800
We're Eco Community Interest Company	1,824
Welcome Group Halesowen	1,650
West Devon Art Workshops CIC	2,000
Wetwheels South West CIC	2,000
Wicked Weather Watch	19,972
Wild Embers	2,000
Women Acting in Today's Society (WAITS)	19,988
Worcester Snoezelen CIO	20,000
XTND-Improving Futures	20,000

Postcode Neighbourhood Trust

Ability Consultancy NW Ltd	2,000
Access Space Network Ltd	3,000
Acorns (North Tyneside)	20,000
ACT (Action for the Community & Town) at the Cheetham's Ltd	15,980
Age UK North Yorkshire and Darlington	20,000
Age UK Teesside	11,311
Alexandra Rose Charity	20,000
Allerdale Disability Association	13,910
Alnwick District Playhouse Trust	10,535
Asperger's Children and Carers Together	14,950
Assembly House	2,000
Barnabus (Manchester)	20,000
Barrow and District Disability Association	20,000
Ben Rhydding Community Benefit Society Limited	2,000
Berwick Cricket Club	12,800
Big Help Project	19,230
Blackburn Academy of Martial Arts	1,950
Blackpool Community Homeless project	4,810
BlueJam Cumbria	2,000
Bollington Borrowers	1,115
Bounceback Food CIC	1,930
Bracondale Practice Health Champions (BPHC)	1,985

Bradford and District Senior Power	19,926
Bradford Bereavement Support	18,585
Bradford Environmental Action Trust	20,000
Brampton Area Action Group	19,662
British Federation of Film Societies	20,000
Brunswick Youth and Community Centre	10,340
Bury Athletic Club	8,300
Butterflies Dementia Support and Activities Group	19,440
Byrne Avenue Trust	19,790
Carleton Community Umbrella	1,900
Carlisle Key	20,000
Cartwheel Arts Ltd	18,253
Changing Relations CIC	2,000
Chapter (West Cheshire) Ltd	18,624
Citywise Mentoring Ltd	4,500
Cleveland Housing Advice Centre (CHAC)	20,000
Collaborative Women UK CIC	2,000
CP Sport	19,900
Cracking Good Food	1,985
Cramlington in the community	13,700
Creative Recovery CIO	20,000
CRESST (Conflict Resolution Education in Sheffield Schools)	19,883
Crosstown Community Orchard	9,194
Croston Together	5,505
Deaf Active	18,480
Dearne Electronic Community Village	14,800
Diane Modahl Sports Foundation	19,808
Doncaster Young Men's Christian Association	20,000
Down Syndrome Cheshire	19,456
Dragons Academy CIC	1,800
East Durham Veterans Trust	13,269
Eden Place	19,998
Edge Hill Youth & Community Centre Ltd	19,849
Emmaus Sheffield	13,856
Emotional Wellbeing Group Ltd	1,976
Empire Electric Palace Theatre (Crook) CIO	19,800
Fallen Angels Dance Theatre	7,610
Foden's Band	4,485
Foundation 92	20,000
Foundation Futures CIO	14,192
Friends of Blackpool Music Service	20,000
Friends of Crag Bank Park	2,000

Friends of Didsbury Park	2,049
Friends of New Earswick Swimming Pool CIO (FONESP)	20,000
Friends of Victoria Park Stretford	17,505
Furness Homeless Support Group	16,763
Furness Multi-Cultural Community Forum	16,771
Global Arts Manchester	2,000
Granby Community Mental Health Group - Mary Seacole House	19,412
Greater Manchester Neshomo CIO	19,955
Green City Action	19,096
Growing Works	20,000
Haslingden Junior Girls Football Club	13,482
Headliners (UK)	19,979
Headway Blackpool Wyre & Fylde	20,000
Healthy Hopes Cumbria Ltd CIC	1,820
High Hopes for Halliwell-being	20,000
Holme Valley Sharing Memories	1,940
Holy Trinity Youth Centre	5,820
Hull Community Church	19,911
Hull Women's Aid	16,425
Humans MCR	19,615
Humber Job Hub CIC	1,995
Hunsonby Community Centre	8,500
Hyde Festival Association (Hyde Festival Community Association)	20,000
Ibijoke Children Foundation UK	19,900
IMO Charity	18,994
Independent Advocacy North East	18,540
Inspiring Communities Together	19,572
International Community Organisation of Sunderland (ICOS)	8,690
Irise International	20,000
James' Place Charity	20,000
Jazz North	9,600
Kaalmo Welfare Trust (kwtrust)	8,500
Keighley Association for Women and Children's Centre	17,483
Keighley Healthy Living	19,838
Kids Kabin	14,807
KidsBank Chester	8,200
Lake District Mobility	19,700
Lancashire Heritage (2018) CIC	2,000
Lancashire LGBT	16,192

Learning Partnerships	11,684	Premier Learning	18,060	Sunnyside Supplies	1,671
Learning through Landscapes	162,800	Prince Bishops Hospital Radio	2,340	Support to Recovery	20,000
leigh Youth and Community Development Trust	19,630	Project: WILD CIC	2,000	Survive Support for Survivors of Rape and Sexual Abuse	19,997
Leven Playing Field Association	20,000	QED Foundation	20,000	Survivors West Yorkshire	19,776
Liberdade Community Development Trust	20,000	ReGenerate - Hope For Autism CIC	1,812	Tam O'Shanter Cottage Urban Farm Trust	6,413
Live Well with Cancer	16,800	Rhythm Reaction CIC	1,980	Tameside Armed Services Community (TASC)	2,000
Living Potential Care Farming CIC	1,923	Ride2Success	10,000	Tanga Club	5,120
Localgiving Foundation	227,506	Rishton Festival Association	1,992	Teesside Athletic FC Ltd	18,283
Love What You Do (Manchester)	2,000	River Holme Connections	17,906	TGC (Upper Teesdale) Ltd	2,000
Love, Jasmine	18,600	Rooted in Hull	1,989	The Arts Emergency Service	18,406
Manchester International Roots Orchestra CIC	2,000	Ruby's Fund	15,044	The Big League CIC	1,400
Manchester Vineyard	16,000	Ruddi's Retreat	9,700	The Booth Centre	19,950
MATRIX Neurological	19,956	Rural Arts North Yorkshire	19,784	The Children's Foundation	10,106
Merseyside Blind & Visually Impaired Football Club	2,000	S4ALL Ltd	10,447	The Choir with No Name	18,010
Mind Moves Services	1,950	Salford Red Devils Foundation	14,325	The Downright Special Network	12,627
MoorEnd Development Trust Limited	15,690	Saltburn Community Response CIC	1,600	The Learning Community.	1,996
Multi-sports Club Northwich	18,640	SELFA	7,350	The Lippy People Charitable Trust	17,400
Musical Connections	6,416	Shaftesbury Youth Club	19,320	The Maggie Oliver Foundation	19,800
Nature's Living Room Community Interest Company	2,000	Sheffield Maternity Cooperative	2,000	The Margaret Carey Foundation Ltd	19,482
NatureEd CIC	1,850	Sheffield Steel Roller Derby Ltd	1,996	The New Brighteners	1,336
Netherton Feelgood Factory	19,690	Shiloh Rotherham	20,000	The Opening Doors Project	20,000
Newcastle upon Tyne YMCA	20,000	Shiva Trust Charity	18,229	The Rainbow Project (Rotherham)	14,055
Nite Light CIC	2,000	Skerton Community Association	3,000	The Road to Recovery Trust	12,000
Nomad Opening Doors	14,510	Skills for People	9,000	The Speak In Club CIC	1,720
North Tyneside Art Studio	18,017	Skool of street	19,850	The Studio Morland CIC	2,000
Northeast Red Squirrels	19,050	Sliding Doors	11,979	The Sunnywood Project	1,950
Northumberland National Park Mountain Rescue Team	20,000	Smart Works Newcastle	20,000	The Swan Song Project	20,000
Nurturing Hope CIC	1,949	Somali Advice Link	9,880	The Welcome (Limited)	20,000
Oasis Community Hub Lister Park	19,964	South Shields Surf CIC	1,990	The Wingate Special Children's Trust	20,000
Oasis Community Hub: Mediacity UK	20,000	South Yorkshire Chaplaincy and Listening Service	17,480	Third Angel	6,417
Oldham Athletic Community Trust	7,200	Special Spirits	19,690	Thrive Cheshire	1,995
OmniMusic	12,370	Spiral - preventing the effects of bullying	5,264	Tigerlily Trust	20,000
Oswin Projects	12,500	Spoons	17,178	Titans Community Foundation	19,612
Parallel Histories	12,185	St Bartholomew's PCC	2,000	Tom's Trust	20,000
Passion for Learning CIO	15,461	St Matthews House Ltd	20,000	Triple A Project (All About Autism)	19,888
Pelton Fell Community Partnership	19,921	State of Mind Sport	5,950	Vale Community Association (The Vale)	2,000
Pendle Women's Forum	19,998	Stick 'n' Step	18,581	Vision & Hearing Support Gateshead And South Tyneside Ltd	17,496
Pennywell Neighbourhood Centre	7,950	Stomping Grounds Forest School CIC	2,000	Walthew House 2017	20,000
Perth Green Community Association	20,000	Street Warriors UK CIC	2,000	Walton Vale Community Shop	2,000
Pilling Memorial Hall	7,190	Streetwise Opera	20,000	We Make Culture CIC	1,800
Pregnant Then Screwed	17,000	Streetwise Youth Community Centre	1,800		
		String of Hearts CIC	2,000		

Wellspring Therapy & Training	9,998
West Yorkshire Print Workshop	19,000
Westview Community Association	4,422
Whitfield with Ninebanks PCC (Parochial Church Council)	2,000
Wildwood days CIC	1,860
women for well women	20,000
Womens Health Matters	20,000
Yoga Nation Wellbeing Hub CIC	1,900
York Community Energy CBS Limited	2,000
York Women's Counselling Service	5,260
Youth Leads UK	19,110
Zero Carbon Yorkshire	11,720

Postcode Places Trust	
2Funky Arts	1,852
AARCA	1,700
Abbey People CIO	20,000
Accuro (Care services)	20,000
Age Concern North Norfolk	9,967
Always Community	11,400
Asperger East Anglia	19,893
ATF Southend	19,993
Aylsham Community Gym	3,825
Bags of Blessings	19,996
Bassetlaw Food Bank	10,500
Be Inspired Today Ltd	1,980
Bishops Stortford Youth Project	15,000
Blue Smile	17,371
Broxbourne Citizens Advice Bureau	17,777
BSEVC	20,000
Cambridge Cancer Help Centre	10,992
Charnwood 20:20	20,000
circus strong CIC	2,000
Classical Music Rocks	12,500
ClearCompany CIC	2,000
Community Recording Studio	12,440
Confident Communities	1,997
Connects & Co	9,723
CP Learning Trust	19,330
David Lynch Foundation UK	20,000
Deda	18,254
Desborough Library and Community Hub	13,000

DIAL Great Yarmouth	19,497
Disability Advice Service (East Suffolk)	14,650
DSAchieve	14,700
Eating Matters	19,995
Electric Umbrella	20,000
Elevator Arts CIC	1,920
Emmanuel Group of Churches	20,000
Equation	19,536
Essex Dementia Care	19,136
Fakenham Focus	20,000
Families United Network	20,000
Family Support Link	19,976
Feathers Futures CIO	19,220
Fight Against Blindness	18,500
FREED-Beeches	20,000
Funny Wonders Incorporated Community Interest Company	2,000
Get Me Out The Four Walls	17,836
Give. Help. Share	12,000
HACRO	20,000
Hardwick Climate Action Group (HCAG)	848
Herts Disability Sports Foundation	19,735
Herts Inclusive Theatre	16,087
Hertsmere Mencap	19,850
Home-Start High Peak	7,501
Home-Start Mid & West Suffolk	14,931
Home-Start Norfolk	19,284
Hoop Dreams Basketball Club	2,000
Involve Active Ltd	1,987
Jumbulance Trust	19,830
Kernos Centre	12,500
Kings Cliffe & Area Community Sports Project Limited	9,800
Lamphouse Theatre	1,976
Learning through Landscapes	122,100
Learning Through The Arts	2,000
Let's Get Out CIC	2,000
Lincoln Community Development Worker Project (t/a developme)	15,895
Lincoln Pelican Trust Ltd	17,000
Little Miracles Charitable Incorporated Organisation	19,618
Live Cancer Free Ltd	1,940
Localgiving Foundation	170,630

LRYSA (Leicestershire & Rutland Youth Sailing Association)	20,000
Musical Keys	10,018
National Association of Child Contact Centres	19,951
Nelson's Journey	11,223
New Routes Integration	7,612
North Norfolk Community Transport	15,000
Northamptonshire ACRE	6,446
Northamptonshire Search and Rescue	20,000
Norwich and Norfolk OCD Voluntary Support Group	18,440
Norwich Door to Door	2,000
Nottingham Rehabilitation Gym CIC	1,820
Nottingham Children, Young People and Families Project	4,740
Opening Doors	18,531
originalprojects	19,650
Ormiston Families	20,000
Peak Empower	15,652
Performing Room	19,217
Plant Pots and Wellies	1,981
Playskill	15,000
Pos+Ability	13,405
POW Nottingham Limited	17,614
Prader-Willi Syndrome Association UK	18,701
Random Café CIC	2,000
REACH Community Projects	20,000
Relate Chesterfield and North Derbyshire	15,060
Reuben's Retreat	20,000
Revive Healthy Living	19,000
Rowan Humberstone Ltd	20,000
Royston & District Community Transport	20,000
Salle Moor Market Garden	2,000
Sanctus	13,000
Service Six	20,000
Signpost (Colchester) Limited	20,000
Southend Carers (SC)	19,854
SPACE	19,084
Spectrum Cambridge	19,973
St Albans District Citizens Advice Bureau	19,500
St Wulfram's Church, Grantham	19,908
STAA	18,321
Steel Bones	2,000

Stepping Stones (working name for Special Needs Enterprises)	11,410
Stepping Stones Play and Learn Group	18,312
Strength With In Me Foundation	19,006
Sue Young Cancer Support	19,060
Suffolk Befriending Scheme for people with Learning disabilities	19,786
Sustainable St Albans	20,000
Templesprings	15,016
The Ataxia-Telangiectasia Society	19,500
The Boston Woods Trust	19,984
The Lewis Foundation	17,500
The Lowdown	19,857
The Michael Roberts Charitable Trust	20,000
The Nancy Oldfield Trust	6,506
The SAW Trust	19,850
This Is Me Counselling And Psychotherapy CIC	2,000
Tithe Barn Trust	17,819
Trust Links Ltd	20,000
Upbeat Communities Ltd	20,000
Victor Batte-Lay Foundation	20,000
VoiceChoice Ltd	2,000
Voluntary Action Epping Forest (VAEF)	4,989
Voluntary Action South Leicestershire	10,000
Watford Women's Centre	13,000
Wellspring Family Centre	20,000
West Herts ABC & Educational Support CIC	2,000
West Norfolk Carers	18,718
West Suffolk Hive CIC	1,940
Young People's Puppet Theatre	18,600
Postcode Planet Trust	
African Parks	1,000,000
Marine Conservation Society	500,000
Royal Zoological Society of Scotland	400,000
Wildfowl & Wetlands Trust	500,000
Wildlife Trusts	2,515,000
WWF-UK	2,515,000
Zoological Society of London	400,000
Postcode Society Trust	
4Sight Vision Support	19,898
Abigail's Footsteps	6,000
Addington Afro Ethnic Health Promotion Group (AAEGRO)	19,940

Age UK Merton	19,949
AHS Wellbeing Online CIC	2,000
AIDS Care Education and Training (ACET)	10,422
ALIKE	12,500
Andover Trees United	20,000
Arco - Music for All Ltd.	6,940
Barking & Dagenham Progress Project	19,637
Barrier Breakers Foundation	5,240
Basingstoke and Alton Cardiac Rehabilitation Charity Ltd	10,500
Be Me Project	18,282
Berkshire County Blind Society (Berkshire Vision)	15,148
Beyond Food Foundation	20,000
Big Local Works Bermondsey	18,000
Big Up Films	2,000
Blue Apple Theatre	19,854
Brighton & Hove Food Partnership	2,000
Brighton Permaculture Trust	20,000
BritSom	14,080
Bromley Churches Housing Action LATCH	9,217
Brookside Theatre	16,674
Capital Kids Cricket	19,880
Centre for ADHD & Autism Support	13,103
Chailey Heritage Enterprise Centre	14,629
Chain Reaction Theatre Company	15,000
Change of Scene	10,868
Child's Vision	20,000
Children Ahead Ltd	9,790
Citizens Advice Elmbridge West	20,000
City Arts Newbury	12,804
City Gate Community Projects	1,500
Community Impact Bucks	20,000
Community Southwark	19,721
Confidance Limited	2,000
Copenhagen Youth Project	20,000
Coram Life Education Centres Hillingdon Limited	1,500
Crawley Mindfulness Centre	18,828
Creative Response (Arts) Ltd	17,117
Crohn's and Colitis Relief	11,700
Day-Mer, Turkish and Kurdish Community Centre	19,919
Dover Smart Project	16,814
Eagle Power Ministries International	9,784
East London Out Project	17,303

Eastleigh Youth and Community Trust	2,082
EFA London	19,394
Ekota Care Trust Limited	11,725
FarmAbility (formerly Farm Inspiration Trust)	18,351
Final Straw Foundation	19,300
Florence Nightingale Museum Trust	19,995
Fluid Motion Theatre Company	17,616
Forest Recycling Project Limited	17,000
Free Shop Crawley	19,820
Freedom Charity	20,000
Friends of Yeading Walk	1,988
Gahu Dramatic Arts	15,300
Hackney Shed	19,200
Heath Hands	17,500
Home Start Camden & Islington	17,500
Home-Start Barnet	19,932
Home-Start East Sussex	20,000
Home-Start I.O.W.	16,489
Hope Family Trust (HFT)	19,472
I have a voice	2,000
IMOS Foundation	6,100
Islington Centre for Refugees and Migrants	16,335
Jewish Bereavement Counselling Service	19,950
Kevin Kararwa Leukaemia Trust	9,075
Key Changes: Positive Mental Health Through Music (Islington Music Forum Ltd)	19,710
Kids Care London	7,245
Kingsley Hall Church and Community Centre	20,000
Lacey Green & Loosley Row Tennis Club	2,000
Learn English at Home	12,534
Learning through Landscapes	162,800
Lending Hope Limited	19,990
Lev Echod Cancer Care	9,250
Lewisham Youth Theatre (LYT)	20,000
Leys Community Development Initiative	11,418
Localgiving Foundation	227,506
London Somali Community Alliance (LSCA)	17,580
Loughborough Junction Action Group	15,120
Made In Hackney	19,769
Making It Out	14,277
Maya Productions Ltd	10,120
Medway Cltizens Advice Bureau	9,850
Medway Watersports Trust	12,840

Mid Sussex Voluntary Action	19,973
Mindful Peak Performance CIC	1,970
Mosac	20,000
Natural Enterprise Limited	17,100
North Crawley Play Park Committee	20,000
One-Eighty Ltd	15,000
Oxford Parent-Infant Project	10,732
Paddington Law Centre	17,514
Paul's Cancer Support Centre	7,770
Peer Productions	10,000
Peer2Peer Education CIC	2,000
Peninim	13,920
Phoenix Arts Association	20,000
Play for Progress	19,875
Playing ON CIO	20,000
POW! Thanet	7,000
Pregnancy Options Centre	9,672
Premier Foundation	19,900
QM Studios	11,520
Quest for Learning	13,555
RABBLE Theatre	19,810
Rapha Christian Centre	12,471
Reading Ladders	16,995
Reedham Children's Trust	18,000
Refreshing Minds	11,220
Release Counselling & Therapy for Women	20,000
Rephael House	14,923
RIANA Development Network (RDN)	19,363
Riverside Counselling Service	7,500
Romsey Cancer Support Centre - Jane Scarth House	7,638
Rubicon Cares	19,953
Sanctuary in Chichester	20,000
School Ground Sounds (SGS)	9,996
Selsey Community Forum	11,500
Settle Support	20,000
Sky Full Of Stories	1,775
SLiDE Dance Ltd	10,470
Slough Fort PreservationTrust	12,800
South Oxford Adventure Playground CIO	12,472
Springboard Youth Academy CIO	15,106
St George's (Hanworth) Youth Club	17,680
St Matthews Residents Association	1,956

Stepney Community Trust (SCT)	19,526
Strength and Learning Through Horses	15,000
Sudbury Neighbourhood Centre	10,000
Surrey Disabled People's Partnership	20,000
Sussex Clubs for Young People Limited	18,523
Teen Action	18,788
Thames Valley Positive Support	3,900
Thanet Countryside Trust Fund	17,875
The Bangladesh Youth Movement (BYM)	18,230
The Dot Collective	7,750
The Empowerment Group	18,000
The Garden Classroom	19,823
The Hope Hub	17,000
The Letcombe Brook Project	8,285
The Living Paintings Trust	19,952
The Mason Foundation	20,000
The Money Charity	20,000
The Musical Youth Company of Oxford	19,932
The Octopus Foundation	2,000
The Otakar Kraus Music Trust	6,600
The Pink Place	19,979
The Pipeline Youth Initiative	20,000
The Poverty and Environment Trust	5,000
The Princess Project	20,000
The Purple Elephant Project	14,349
The Renegades	19,809
The Royal Docks Learning & Activity Centre	19,747
The Russell Martin Foundation	19,720
The Showroom Gallery Limited	18,000
The Sixteen Trust	15,000
The Sunshine Centre	12,600
The Woking Community Furniture Project	4,710
The Woodland Centre Trust (Camp Mohawk)	19,493
The Young Lives Foundation	20,000
Therapy 4 Healing	2,000
Time and Talents Association	20,000
TotRockinBeats CIC T/a Dad La Soul	1,976
Toyhouse Libraries Association of Tower Hamlets	19,900
Trauma Treatment International	18,000
Tuppenny Barn Education	19,805
UCARE [Urology Cancer Research and Education]	14,000
UK Egyptian Coptic Association	11,355

Universal Ease to Redress	17,160
VOYAGE	19,410
Westerham Cricket Club	2,000
Westmeria Counselling Services	19,697
Wetwheels Solent CIC	2,000
Whale Song Music Therapy CIC	2,000
White City Theatre Project CIO	19,500
Winchester Youth Counselling	17,716
Worthing Cricket Club	1,494
Young Barnet Foundation	19,283
Young Climate Warriors	4,875
Young Roots	19,877
Youth & community connexions	19,975
Z.S.V. Trust	13,060
Postcode Support Trust	
Crisis	2,648,000
Depaul UK	2,797,000
Kinship	300,000
Missing People	800,000
Re-engage (Contact The Elderly)	400,000
Royal Voluntary Service	2,536,000
The Prince Of Wales's Charitable Fund	800,000
The Reader	600,000
The Silver Line	450,000
Volunteering Matters	750,000

Governance

Regulation

Novamedia established Postcode Lottery Limited in Britain. People's Postcode Lottery is incorporated in England and Wales.

People's Postcode Lottery has a duty to ensure it is crime-free, fair and open and protects children and vulnerable people.

All draws use a random number generator which has been certified by a Gambling Commission approved testing organisation, and are supervised by an independent adjudicator.

Although lotteries are recognised as low risk for problem gambling, People's Postcode Lottery is committed to protecting the millions of people who play. It adheres to the Postcode Lotteries-wide code of conduct on responsible play.

People's Postcode Lottery takes the management and protection of players' data and personal information seriously. It is ISO27001 accredited, which recognises the highest security standards, and was among the first companies in the UK to be awarded the data protection standard BS10012.

Licensing

People's Postcode Lottery, the trading name of Postcode Lottery Ltd, is licensed and regulated by the Gambling Commission, the regulatory body for Gambling in Britain. Licence numbers 000-000829-N-102511 and 000-000829-R-102513.

We are proud to be part of an international family of Postcode Lotteries, which operate in Britain, the Netherlands, Sweden, Germany and Norway.

The instantly recognisable Postcode Lottery format, on which success depends, is owned by Novamedia.

Novamedia charges a licence fee for the use of its intellectual property related to the Postcode Lottery format.

The fee is mainly used to finance and set up new Postcode Lotteries and for the continued development of Novamedia's formats.

More on Novamedia, organisation and governance
novamedia.nl/who-we-are/organisation

Trading address

28 Charlotte Square, Edinburgh, EH2 4ET

Registered office

2nd Floor, 31 Chertsey Street, Guildford, Surrey, GU1 4HD

Phone: 0800 368 5556

Email: communications@postcodelottery.co.uk

For corporate news and information: postcodelottery.info

For prizes and playing: postcodelottery.co.uk

