

# People's Postcode Lottery Annual Report 2019







Thanks to players, Woodland Trust has been able to buy Ben Shieldaig, a mountain in Scotland's western Highlands, and protect its ancient woodland.  
Credit: Steve Carter/WTML.





Players, like Florence in Slough, have raised more than £500 million for good causes.



Medical Detection Dogs train dogs to save lives using their sense of smell. Funds awarded from Postcode Animal Trust.

## Contents

- 2 Welcome from the directors
- 4 About Novamedia and the Postcode Lotteries
- 4 How it works
- 6 How we have grown
- 10 2019: Our year in numbers
- 11 A big win for charity lotteries
- 12 Transforming lives and communities
- 18 This year's players and winners
- 20 People's Postcode Lottery ambassadors
- 22 Our culture and team
- 24 Our approach to sustainability
- 26 Financial reporting
- 27 Funds for charities and good causes
- 34 Governance



Our team ring bells and knock on doors all over the country.



Bexley Mencap helps people with learning difficulties lead healthier lives through sport. Funding awarded from Postcode Community Trust.



/peoplespostcodelottery



@PostcodeLottery  
@PostcodePress



/PostcodeLottery



/peoplespostcodelottery

# Welcome from the directors

*Since our beginnings in 2005, our sole purpose at People's Postcode Lottery has been to raise funds for charities and good causes, and also raise public awareness of their work.*



Annemiek  
Hoogenboom,  
Country Director

We are pleased to report that 2019 was another exciting, and successful year. Players raised £138 million – £22 million more than the previous year. The total number of charities and good causes supported climbed to 7,500, while the total raised by players since our launch surpassed half a billion pounds – an outstanding achievement.

Meanwhile, 78 per cent of players across England, Scotland and Wales celebrated a win. We can confidently say that this year, both our players and supported causes have been true winners.



Clara Govier,  
Managing Director  
and Chair

Sir David Attenborough, Dame Emma Thompson, George Clooney, Olivia Colman and Carey Mulligan were among the high-profile charity ambassadors and supporters to thank players for helping to transform lives and communities in Britain and beyond.



Lorna Menzies,  
Managing Director  
and Head of Television

In July, we warmly welcomed the UK Government's announcement that it would increase the annual limit, from £10 million to £50 million, on the amount charity lotteries can raise. Our aim is to ensure charities receive the maximum amount of funding possible. For that reason, we had called on the UK Government to reform Britain's outdated charity lottery regulations.



Rob Letham,  
Managing Director  
and Head of Finance

This year's announcement was a landmark moment for us – the result of a long and hard-fought campaign. Success has only been possible thanks to the charity leaders who lent their voices to this ambition, along with the backing of many parliamentarians and the continued determination of our team. We say a special thanks to you all.





Street League uses sport to move young people into employment. Funding awarded from Postcode Sport Trust.



Sightsavers provides life changing eye care to some of the world's poorest communities.

The year was defined by the climate emergency. Globally, public attitudes shifted significantly, inspired by a new generation of climate activists. Governments around the world came under intense pressure to cut carbon emissions further and faster. The time for action is now. That is why, over the coming year, we will increase funding for climate change projects while working to reduce our own greenhouse gas emissions further.

Finally, a word of thanks to our talented team – none of the many achievements of 2019 would have been possible without their unstinting dedication. Together we make a difference.



Players make a difference in local communities across Britain.



# About Novamedia and the Postcode Lotteries

*When you play People's Postcode Lottery, you are contributing to positive, impactful change. The more tickets we sell, the more funds there are available for good causes.*



Players support Whizz-Kidz, a charity that transforms disabled children's lives by providing essential equipment to live fun, active childhoods. Funding awarded from Postcode Children Trust.

Novamedia has been raising money for charities and good causes since 1989, when it created the world's first postcode lottery in the Netherlands. Its mission is simple but ambitious – to help create a fairer, greener world.

Today, it has lotteries in five countries – the Netherlands, Sweden, Britain, Germany and Norway. There are more than 11 million postcode lottery players who have raised more than 10 billion euros for charities and social initiatives worldwide.

Novamedia and the Postcode Lotteries were ranked the second biggest private charity donor in the world and the largest in Europe in 2018/19\*.

## **How it works**

People's Postcode Lottery is a subscription lottery where players sign up with their postcode and pay £10 a month. They are entered into all 20 monthly draws, with winning postcodes announced every day of the month. The funds raised go to good causes directly or are distributed by one of 20 independent, grant-giving charitable trusts.

\*World's top charity donors, City AM Giving magazine, December 2019





Winning postcodes are announced every day. On World Gorilla Day, ZSL London Zoo's own troop helped reveal a £30,000 winning postcode.



With People's Postcode Lottery, players and good causes win.

WHERE THE TICKET PRICE GOES

A minimum of  
**32%**  
to good causes (12% more than  
20% regulatory minimum)

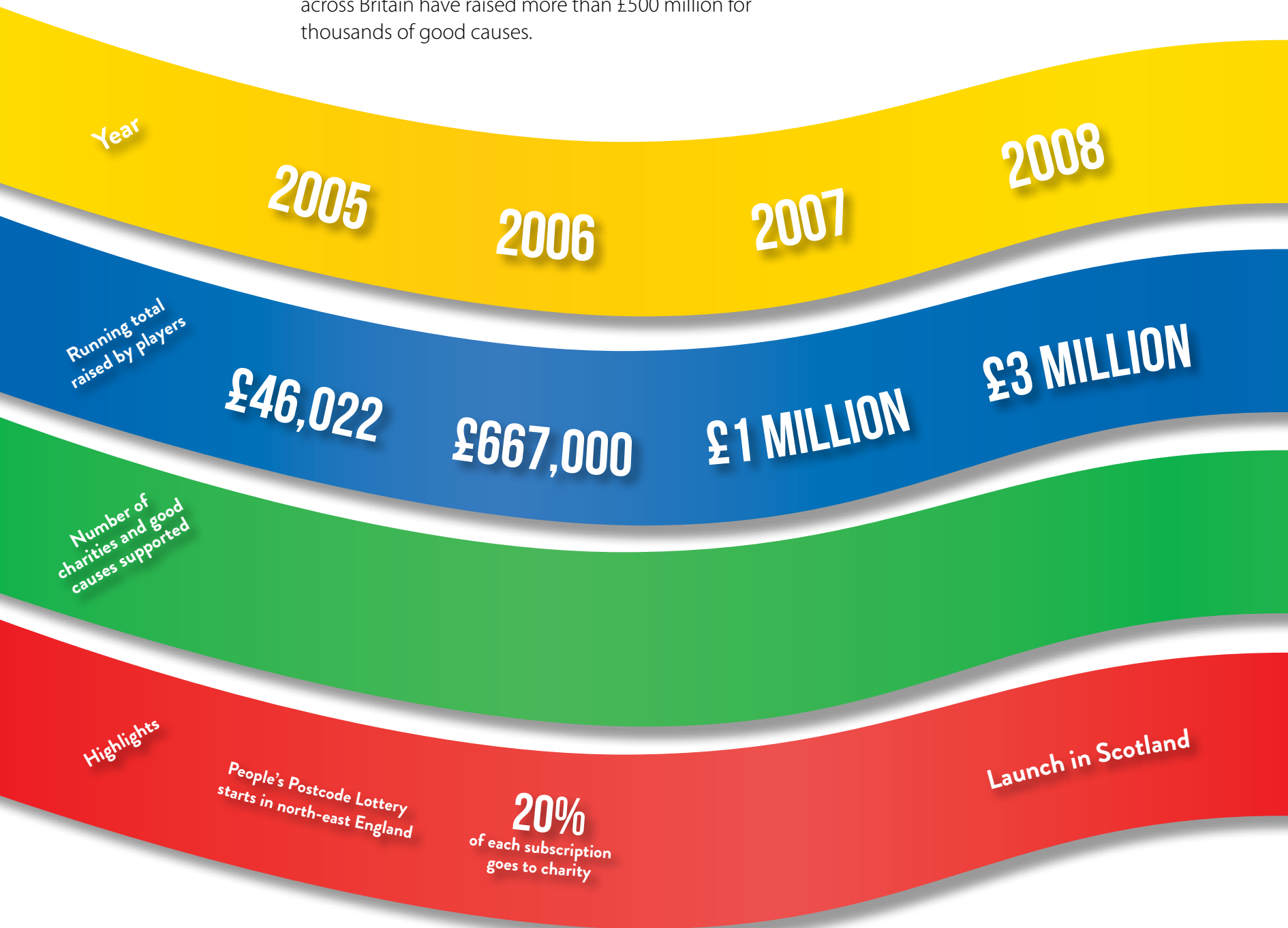
**40%**  
paid out in prizes

Up to  
**28%**  
to cover operational costs

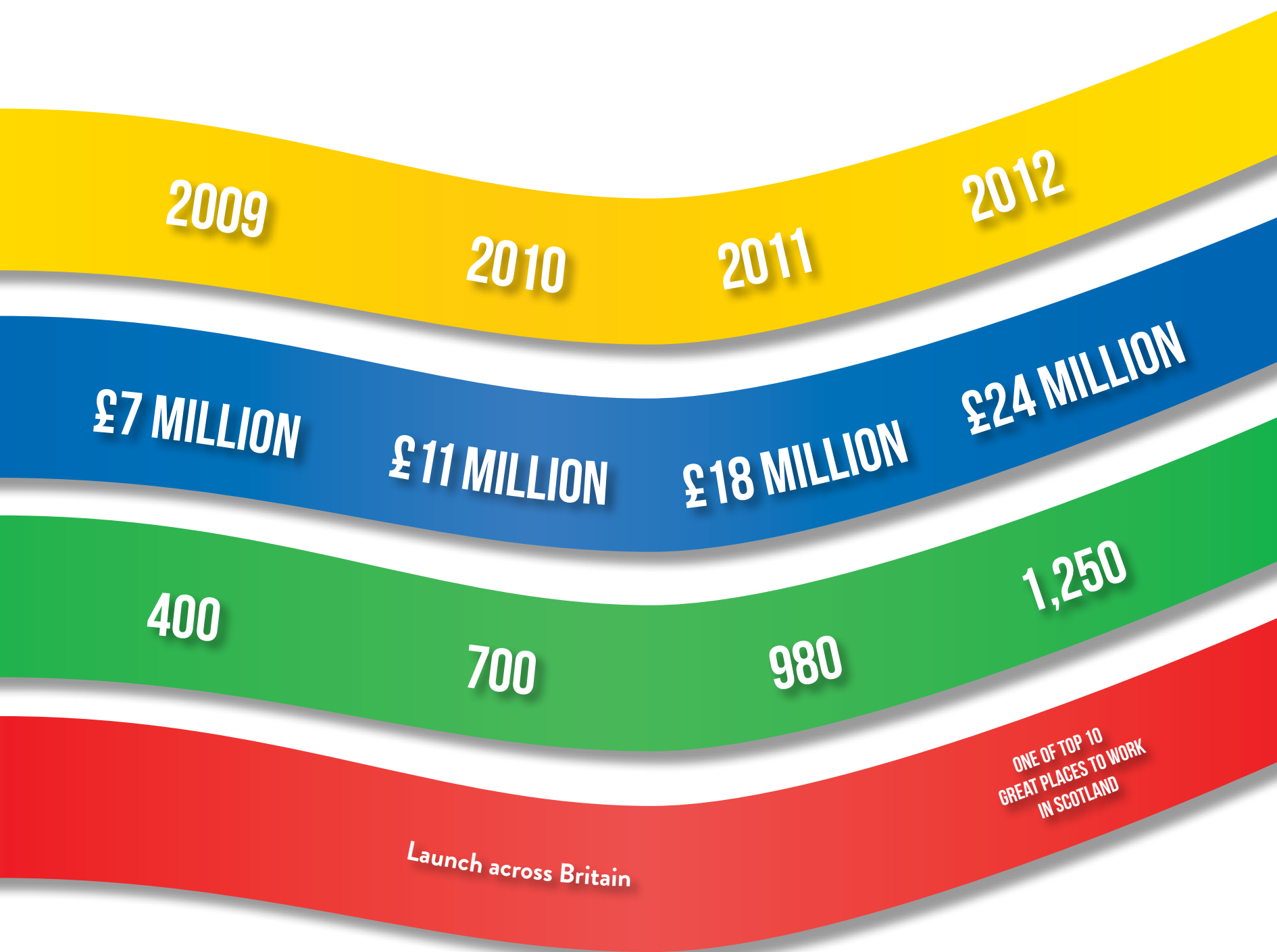


# How we have grown

People's Postcode Lottery began in Britain as a small pilot project 14 years ago. Since then, players across Britain have raised more than £500 million for thousands of good causes.

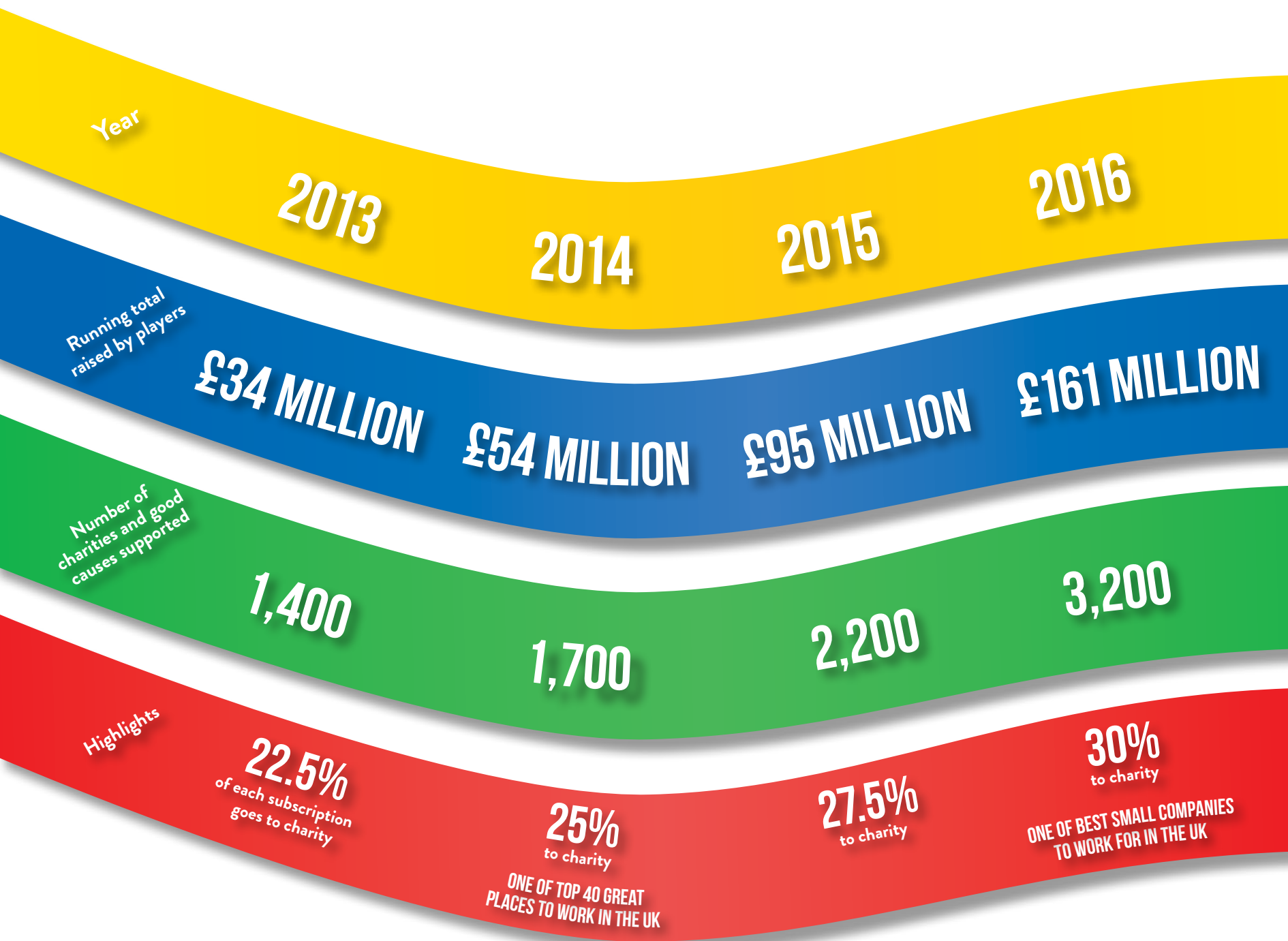








# How we have grown





2017

2018

2019

£255 MILLION

£371 MILLION

£500 MILLION

4,650

5,500+

7,500

31%  
to charity

32%  
to charity

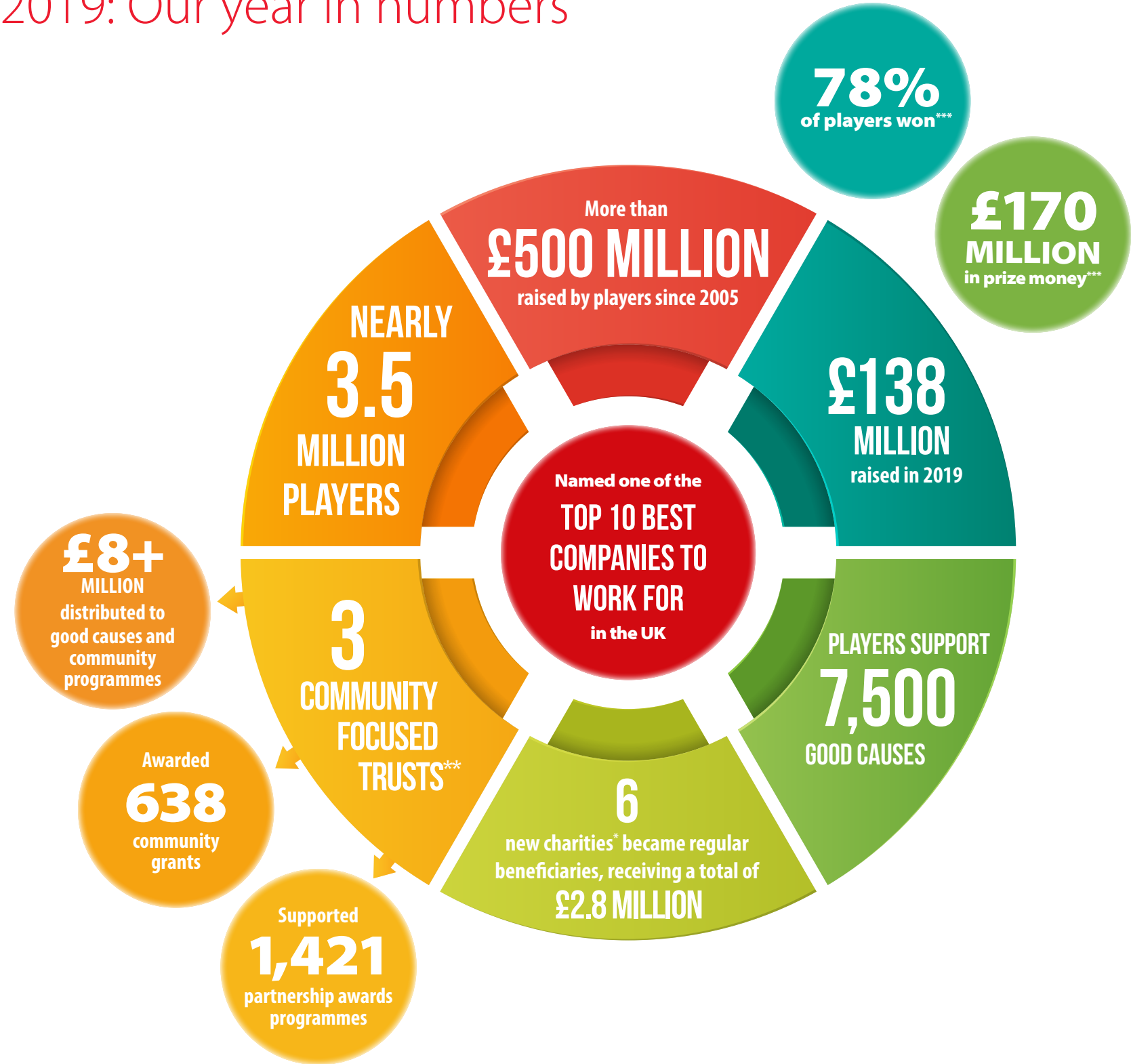
COMMITMENT TO HALVING  
CARBON EMISSIONS BY 2025

32%  
to charity

RANKED 9TH IN THE SUNDAY TIMES  
100 BEST COMPANIES TO WORK FOR IN THE UK



# 2019: Our year in numbers



\*Action Against Hunger and Peace Direct are funded via Postcode African Trust, Medical Detection Dogs is funded via Postcode Animal Trust, Women for Women International is funded via Postcode Equality Trust, Care International UK is funded via Postcode Global Trust, and Alzheimer's Society is funded via Postcode Support Trust.  
\*\*Funds raised by players and awarded from Postcode Community Trust, Postcode Local Trust and People's Postcode Trust.  
\*\*\* England, Scotland and Wales





Players have raised more than £13 million for Maggie's so far. This funding is helping thousands living with cancer.



Emergency medical charity Magpas Air Ambulance received £20,000. Funds awarded from Postcode Community Trust.



£2.2 million has been raised for Guide Dogs. In 2019, players funded a litter of nine puppies to assist people with sight loss.

## A big win for charity lotteries

In 2019, we celebrated the successful outcome of our longstanding campaign to increase the UK limit on charity lottery sales.

Under existing regulations, charity lotteries are limited to £10 million in sales each year. This limit, in place since 2005, means good causes lose out on vital funding.

For over four years, People's Postcode Lottery lobbied the UK Government to raise this limit and 'let us do more', so that charities and good causes receive the maximum amount of funding possible.

In July 2019, after in-depth research and consultation, the UK Government announced a five-fold increase in the annual amount charity lotteries can raise – to £50 million. This new limit is a hugely significant win for the sector – it will reduce bureaucracy and costs while unlocking additional vital funds for good causes across the country. The new limit should come into force in July 2020.

Our message to Government has always been to 'let us do more' – this five-fold increase will allow us to do exactly that.

More about our public affairs work

➔ [www.postcodelottery.info/about-us/public-affairs](http://www.postcodelottery.info/about-us/public-affairs)



# Transforming lives and communities

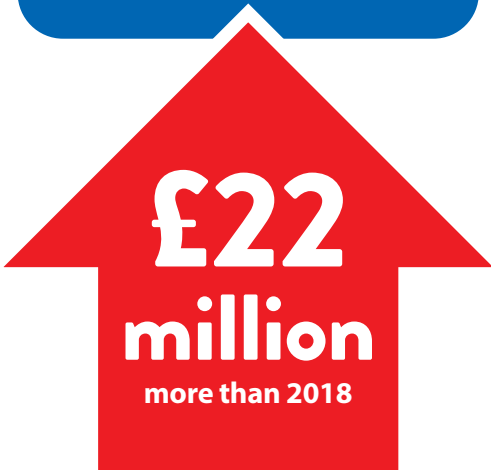
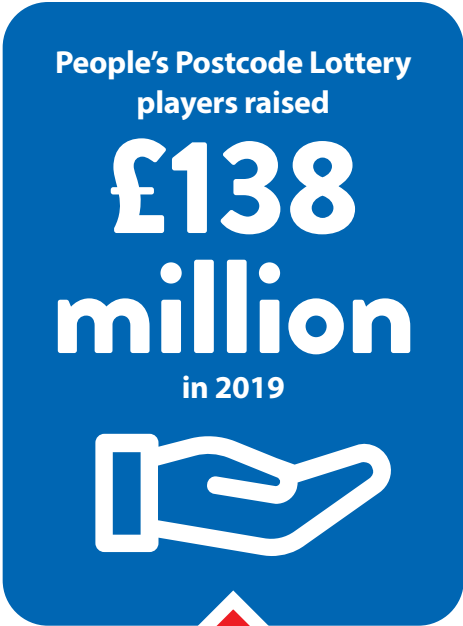
Our players support a huge variety of charities and good causes. Here is just some of the transformational work made possible by these funds over the last 12 months.



Rapid British Red Cross assistance given to almost 450,000 people facing humanitarian emergencies.



Supported National Trust efforts to safeguard a stretch of the 10-mile-long White Cliffs of Dover. Funds awarded from Postcode Earth Trust.



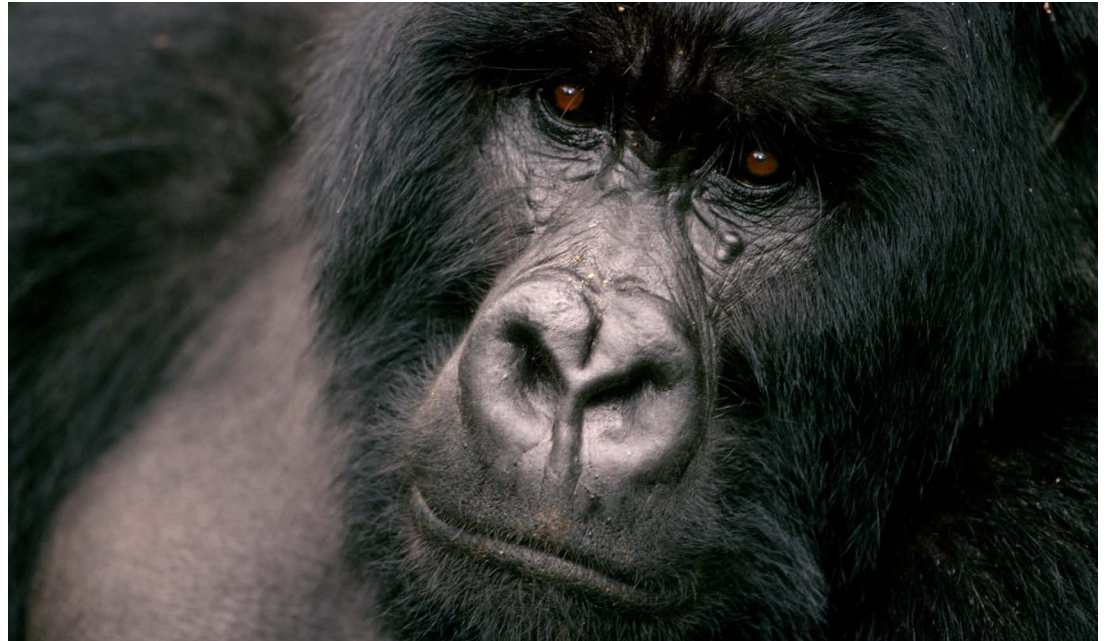




Healthy breakfasts have been provided to 40,000 school children every day by Magic Breakfast. Funds awarded from Postcode Children Trust.



Guide Dogs is providing life-changing services to more than 360,000 people with sight loss.



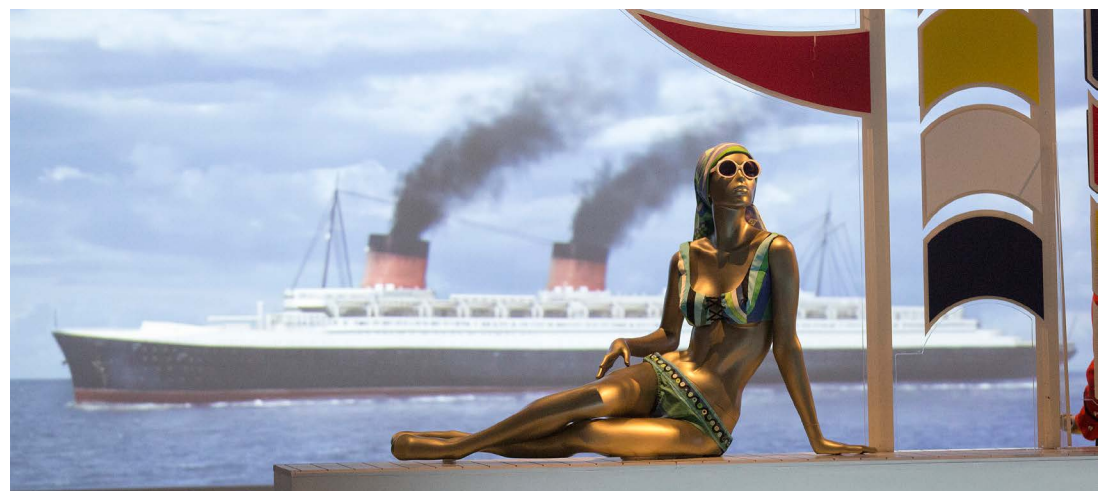
Helped towards the recovery of Africa's mountain gorilla population – Fauna & Flora International say there are now more than 1,000 of the animals living in the wild. Funds awarded from Postcode Planet Trust.



Woodland Trust has been able to buy Ben Shieldaig, a mountain in Scotland's western Highlands, and protect its ancient woodland.



The Silver Line has taken 115,000 calls from older people experiencing loneliness who were in need of friendship and support. Funds awarded from Postcode Support Trust.



An exhibition celebrating ocean liners and shipbuilding heritage toured to the V&A Dundee, drawing 126,000 visitors. Funds awarded from Postcode Culture Trust.

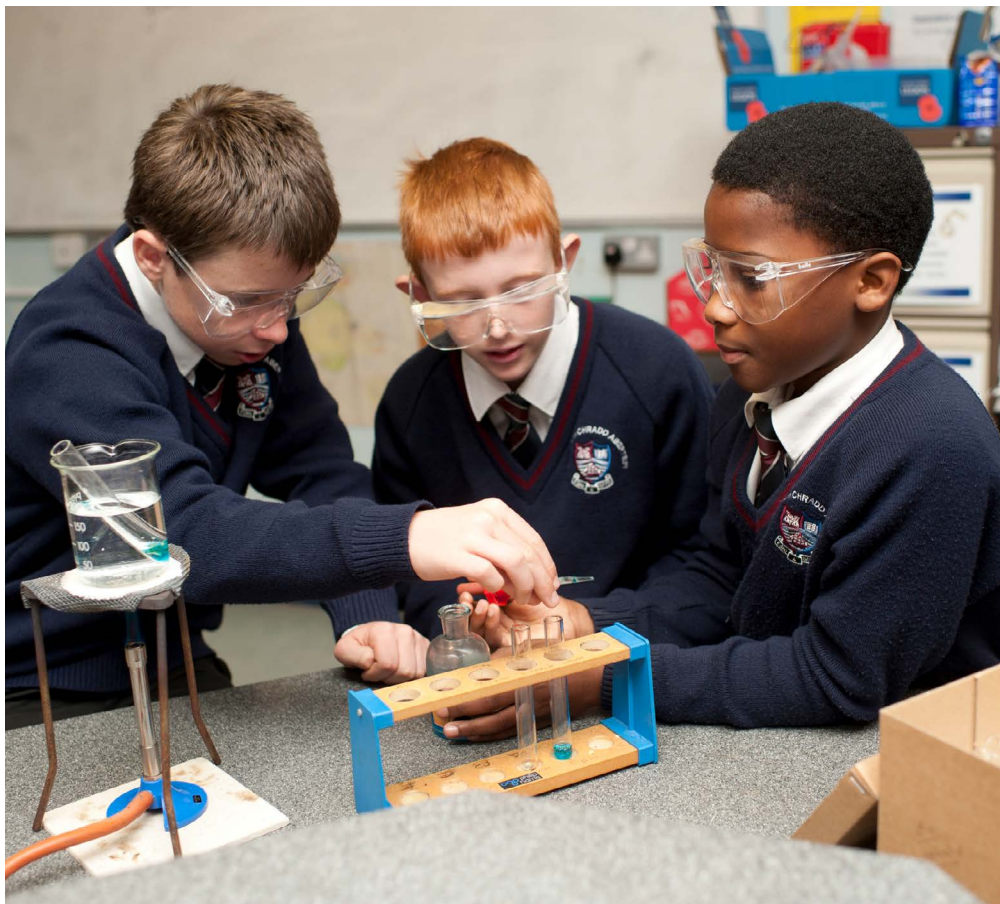


## **Buttle UK**

**£100,000**

### **Funds awarded from Postcode Children Trust**

Buttle UK received £100,000 to help children and young people growing up in poverty. Thanks to players, the charity will be able to fund grants of up to £2,000 for more than 200 children and families in need across the country. Through smaller, targeted grants, the charity helps cover the costs of everyday essentials, additional tuition or extracurricular activities, breaking down the barriers to learning and development.



Buttle supports children and families living in poverty.

## **Women in Sport**

**£100,000**

### **Funds awarded from Postcode Sport Trust**

Women in Sport received £100,000 to encourage more women going through the menopause to take part in physical activity. This unique initiative aims to help women remain stronger and healthier into later life.



Women in Sport are changing sport for women and girls everywhere. Players are helping achieve this.





Lightweight, with a sensitive sense of smell these rats are ideal mine detectors.  
Credit: Taylor Weidman/APOPO

## APOPO

**Total raised so far: £3,575,000**

### Funds awarded from Postcode Planet Trust

APOPO trains African giant pouched rats to make life-saving discoveries, sniffing out landmines and tuberculosis. APOPO's HeroRATs re-tested more than 250,000 suspected tuberculosis patients in 2019. The charity increased its number of partner health clinics, benefitting more than 1,000 people. In Angola, 1.5 million square metres of land were cleared of landmines.



Player raised funds help NSPCC stop child abuse and support recovery.

## NSPCC

**Total raised so far: £3,322,465**

NSPCC works to protect children and young people, with the goal of making child abuse a thing of the past. Players support its Speak out Stay safe programme and Childline service. In 2019, funding helped Childline counsellors provide almost 22,000 counselling sessions, giving young people an opportunity to talk about the problems or dangers they were facing.



## RNIB

### Total raised so far: £2,238,440

Funding raised by players enabled the sight loss charity RNIB to expand its services in 2019. This allowed RNIB's Connect community to grow by 20 per cent. Led by blind or partially sighted people, Connect provides peer-to-peer support, as well as opportunities to build friendships and share knowledge and experience.



Players support RNIB's work with some two million people living with sight loss in the UK.

## British Red Cross

### Total raised so far: £4,886,647

Players have supported the British Red Cross since 2013, enabling its work to assist communities in crisis around the world. These funds are helping to tackle ongoing food crises in Africa, support Syrian refugees in Lebanon and respond to the Ebola outbreak in the Democratic Republic of Congo.



Funding helps the British Red Cross support people in times of crisis.  
Credit: Alicia Melville-Smith/British Red Cross





Children with cancer and their families get emotional and practical support from Team Jak, thanks to players.

### **Team Jak Foundation**

**£17,500**

#### **Funds awarded from Postcode Local Trust**

Providing emotional and social support to children and young people with cancer and their families, Team Jak received funding to develop its Angel Garden. This outdoor area provides loved ones with a quiet space to remember those they have lost.



Funds raised for Positively UK are helping those living with HIV.

### **Positively UK**

**£20,000**

#### **Funds awarded from Postcode Community Trust**

Positively UK supports people living with HIV and is well placed to do so as it is also led by people living with HIV. The charity helps those affected deal with their diagnosis and the practical challenges of life with the condition. Player funding helps deliver a self-care toolkit to guide mentors and those seeking support in tackling important issues within the HIV community.



Vision Care for Homeless People provide eyecare to those who are vulnerable. Players help make this care possible.

### **Vision Care for Homeless People**

**£17,500**

#### **Funds awarded from People's Postcode Trust**

The charity provides eye care to homeless and vulnerable people in a welcoming and friendly environment. Funding raised thanks to players enables the organisation to develop its volunteer training and capacity.



# This year's players and winners

Every day, people around Britain play and celebrate a win with People's Postcode Lottery. By doing so, they raise much-needed funds for good causes that contribute to a better, fairer world. The more tickets sold, the more funds are available to support thousands of projects in Britain and beyond.

Prizes range between £10 and £30,000, right up to a share of the monthly £3 million postcode millions prize. In August and December draws, books were added as prizes. More than 12,500 winning players in August received a copy of 365 Days Wild, published by supported charity The Wildlife Trusts, to embrace and enjoy the natural world around them.

In an exciting first, May's draw month brought two postcode millions celebrations – a total of £6 million was shared among 1,212 lucky winners across two winning postcode sectors in Torquay, Devon, and East Riding, Yorkshire.

Our #30KADAY campaign saw £30,000 for winning postcodes announced every day in the July, September and December draws. There were 329 winning tickets.

People's Postcode Lottery made its big screen debut, venturing into cinema screen advertising for the first time. The campaign – featuring high-profile charity ambassadors and supporters including Sir David Attenborough, Dame Emma Thompson, George Clooney, Olivia Colman and Cary Mulligan – enjoyed a prime spot ahead of the feature film Downton Abbey.

\*shared among winning postcodes across England, Scotland and Wales.



495 players in Dartford won £3 million between them in August.

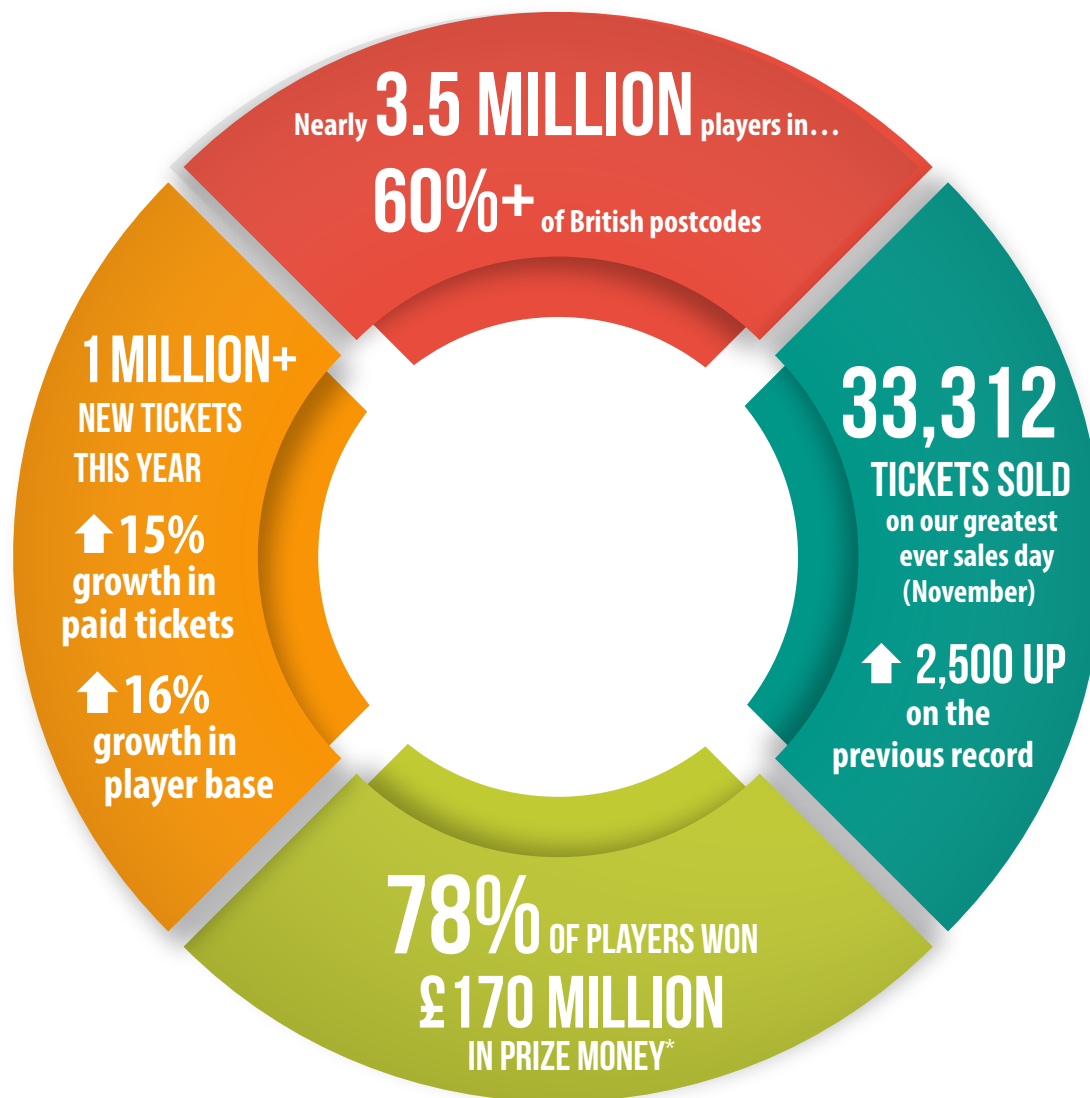


Nine neighbours in Hull won £30,000 per ticket in July's #30KADAY prize campaign.



In September, 897 lucky players in St Helens shared £3 million.





A Bootle postcode saw six neighbours win together, as part of December's #30KADAY campaign.



Thanks to players, AfriKids can help thousands of children in Ghana stay safe, healthy and in school. Funds awarded from Postcode African Trust.

# People's Postcode Lottery ambassadors



**Jeff Brazier**

"It's wonderful to meet so many winners, finding out what it means and how the money will make a difference to them and their lives. But with the Postcode Lottery, it's not just players who win... the good causes they support are winners too."



**Danyl Johnson**

"We've been knocking on doors and ringing bells right across the country – it's been an even bigger and better year, with millions of players celebrating a win and raising an outstanding £138 million."





### **Matt Johnson**

"A memorable moment for me was showing a past winner in Wales a special message from a couple in Africa – they could see each other properly for the first time in years thanks to cataract surgery. This simple sight-saving operation was only made possible thanks to players just like her."



### **Judie McCourt**

"Players of People's Postcode Lottery are part of a community of people who are making a better world. Money raised by players is supporting people living with HIV, providing schoolchildren with a nutritious breakfast, covering underreported news and much, much more."



### **Fiona Philips**

"Protecting the iconic White Cliffs of Dover, tackling loneliness through reading, transforming young lives through sport in disadvantaged areas... the funding raised by players is making a very real difference to communities right across the country."

# Our culture and team

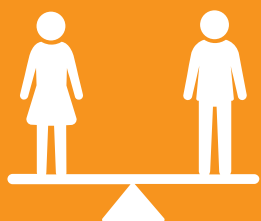
We know that our greatest strength is our team – all 337 of us. People's Postcode Lottery is a workplace where everyone can progress and achieve their full potential. It offers a fun and rewarding culture combined with a strong focus on team engagement and development.

We invest up to 4 per cent of salaries in developing talent each year. In addition to external training, our in-house training division and academy provide team members with diverse learning and development opportunities to challenge and stretch them at every stage of their career.

We also encourage the team to spend two days a year volunteering with good causes and finding out how support from players makes a difference. From beach cleans and planting trees to packing books bound for libraries in Africa, more than two thirds of the team helped a charity in 2019.

To support development and progression, we undertook a business-wide job evaluation and benchmarking project. This informed a new grade structure and salary scale, and helped shape new opportunities for personal growth, skills development and clear career paths.

Find out more about our team and culture  
➡ [www.postcodelottery.info/careers/culture](http://www.postcodelottery.info/careers/culture)



**Gender diversity** is already strong in certain parts of our business. Overall, our team is close to being gender-balanced, and our senior management team has **60:40 female to male representation**.



During 2019, we secured **Cycle Friendly Employer** accreditation. This national award – part of a Europe-wide scheme – recognises the standard of support an employer provides to its staff for cycling to work.





Team members have opportunities to learn how funding from players is making a difference to good causes.



We have a strong learning and development culture. Up to 4 per cent of salaries is invested in training each year.



We are proud to be Fun, Courageous, Sharing and Sustainable!

**RANKED**

**#9**

in *The Sunday Times*  
100 Best Companies  
to Work For in  
the UK (2019)

**UP TO**

**4%**

**OF SALARIES  
INVESTED IN TRAINING  
EVERY YEAR**

**2/3**

**OF STAFF  
VOLUNTEERED  
IN 2019**



**50%**  
cut in our greenhouse  
emissions by 2025\*

## Our approach to sustainability

Good Operations is what we call our approach to corporate sustainability and responsibility. We are committed to creating lasting social change while building a truly sustainable, low carbon operation.

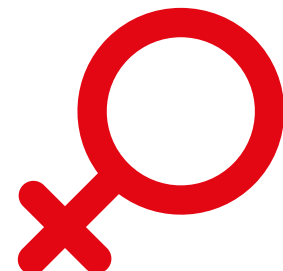
In 2019, we completed a detailed business-wide carbon audit to help us identify the steps we must take to achieve our goal. We also formed steering and working groups to drive forward sustainability initiatives and champion our Good Operations agenda.



Our office electricity comes from **clean, green, renewable energy sources**. An in-depth facilities review was undertaken to identify further energy reduction measures for our offices.



The paper we use is **FSC certified**, guaranteeing material comes from responsibly managed forests that benefit society and limit damage to the environment.



Team members were offered a free, **reusable mooncup** to raise awareness of period poverty, break taboos around menstrual health and encourage waste reduction.

\*From a base line year of 2018.



## Good Operations

Our approach is built around five principles.

### Customer-focused campaigning

Our customers are our players. We aim to engage our players and potential players in our mission – we take them on our journey, show them the incredible things that can be achieved by charities and good causes around the world, and thank them for their support.

### Funding for resilience

People's Postcode Lottery is all about raising funds for good causes and helping to build strong social organisations. Our unique model of unrestricted, flexible and long-term funding gives our supported charities breathing space to step off the fundraising treadmill, build capacity and resilience, and focus on growing their services.

### Operating with integrity

We strive to do the right thing and be the best we can possibly be. People's Postcode Lottery is committed to operating with integrity and transparency across all areas of our business. Our conduct is built around industry best practice. We go above and beyond to protect personal data and ensure safe, fair lottery participation.

### A great place to work and meet

Our people are our greatest strength and the key to our success. We create a safe and inspiring workplace where they can be their best. We focus on their well-being and invest in their development. We aim to maintain a thriving, equal and respectful environment, guided by our values and continually shaped by our team.

### Relationships built on trust and transparency

At People's Postcode Lottery, our relationships with our charities, our team and our suppliers are built on trust. Working closely with our partners, we undertake research and detailed analysis to better understand our areas of impact. At the heart of our business is trust – in our people, partners and suppliers – and a code of conduct based on transparency and fairness.

More on our approach to sustainability

➡ [www.postcodelottery.info/about-us/sustainability](http://www.postcodelottery.info/about-us/sustainability)

*“At People's Postcode Lottery, our core values include thinking and acting sustainably. So we are working hard on our own sustainability credentials to help ensure a greener, fairer planet. Our ultimate goal, together with Novamedia and the Postcode Lotteries, is to cut our greenhouse emissions, help tackle climate change and reduce our environmental footprint.”*

*“We recognise the challenge in front of us, but we are courageous and ambitious, and we are working with our sister lotteries to meet our 2025 target.”*

**Clara Govier, Managing Director**

# Financial Reporting

Our performance in 2019 (in £1,000)

	Share of total			
	2019		2018	
Total Proceeds	432,998	100%	365,327	100%
Prizes	173,199	40%	146,131	40%
To Promoting Societies	138,559	32%	116,904	32%
Lottery Management Costs	121,240	28%	102,291	28%

Beneficiaries	2019
ActionAid	2,872
Amnesty International	2,836
Barnardo's	2,352
Breast Cancer Care	2,180
British Red Cross	2,387
Canal & River Trust	2,917
Cats Protection	1,216
CLIC Sargent	2,332
Crisis UK	2,784
Depaul UK	2,903
Dogs Trust	2,784
Friends of the Earth	2,912
Girl Guiding UK	2,987
Guide Dogs for the Blind Association	1,166
Maggie's	2,933
NSPCC	2,279
Oxfam	2,857
PDSA	2,297
People's Postcode Trust	2,816
Plan International UK	2,903
Postcode African Trust	2,863
Postcode Animal Trust	2,921
Postcode Care Trust	2,814
Postcode Children Trust	2,903
Postcode Community Trust	2,782
Postcode Culture Trust	2,910
Postcode Dream Trust	2,903
Postcode Earth Trust	2,858
Postcode Education Trust*	1,811
Postcode Equality Trust	2,884
Postcode Global Trust	2,916
Postcode Green Trust	2,929
Postcode Heroes Trust	2,929
Postcode Innovation Trust	2,780
Postcode Local Trust	2,787
Postcode Neighbourhood Trust	1,811
Postcode Planet Trust	2,892
Postcode Sport Trust	2,856
Postcode Support Trust	2,921
Ramblers	2,888
Royal National Institute of Blind People	1,164
Royal Voluntary Service	2,891
Save the Children	2,910
Sightsavers	2,889
The Royal Society of Wildlife Trusts	2,892
The Woodland Trust	2,889
TheirWorld	2,396
Unicef	2,921
War Child	2,843
WaterAid	2,797
WWF	2,883
Youth Music	2,987
Grand Total	138,559

\*Funds awarded in 2020.



Funds for charities and good causes

GOOD CAUSE	AMOUNT (£)
Postcode African Trust	
Action Against Hunger	450,000
AfriKids	450,000
Amref Health Africa UK	500,000
Book Aid International	450,000
Global Fund for Children	100,000
Mary's Meals	450,000
Ndlovu Care Group	450,000
Peace Direct	450,000
Postcode Animal Trust	
Battersea	750,000
Marine Conservation Society	550,000
Medical Detection Dogs	250,000
Riding for the Disabled Association	550,000
Traffic International	100,000
Wildfowl & Wetlands Trust	550,000
Postcode Care Trust	
Carers Trust	600,000
Missing People	800,000
Music in Hospitals	100,000
Prince of Wales's Charitable Fund	800,000
The Reader	600,000
Postcode Children Trust	
Buttle UK	100,000
Children 1st	750,000
Children North East	400,000
Daisy Chain	400,000
Magic Breakfast	400,000
Place2Be	400,000
Whizz-Kidz	400,000
Postcode Culture Trust	
Edinburgh International Book Festival	375,000
MAC Birmingham	375,000
National Galleries of Scotland	525,000
National Museums Scotland	375,000
National Museum Wales / Amgueddfa Cymru	375,000

Sistema Scotland	375,000
V&A Dundee	375,000
Postcode Dream Trust	
Brilliant Butterflies	1,000,000
Water Works	1,000,000
Make Fashion Circular	1,000,000
Postcode Earth Trust	
Forum For The Future	250,000
National Trust	750,000
National Trust for Scotland	250,000
Royal Botanic Garden Edinburgh	400,000
Royal Botanic Gardens, Kew	400,000
Science Museum Group	550,000
Yorkshire Dales Millennium Trust	400,000
Postcode Equality Trust	
Clooney Foundation for Justice	500,000
Girls Not Brides	250,000
Helen Bamber Foundation	250,000
Hope & Homes for Children	250,000
Human Rights Watch	800,000
Liberty (Civil Liberties Trust)	450,000
Reprieve	250,000
Women for Women International	450,000
Postcode Global Trust	
Care International UK	650,000
Children on the Edge	250,000
Humanity & Inclusion UK	250,000
Medecins Sans Frontieres	850,000
Postcode Green Trust	
Bumblebee Conservation Trust	95,000
ClientEarth	250,000
Ellen MacArthur Foundation	550,000
Greenpeace	250,000
Keep Britain Tidy	550,000
Surfers Against Sewage	100,000
The Conservation Volunteers	550,000
The Royal Parks	750,000
Trees for Cities	100,000

Postcode Heroes Trust	
Dame Kelly Holmes Trust	700,000
Ellen MacArthur Cancer Trust	450,000
Scotland's Charity Air Ambulance	250,000
Street Soccer	250,000
The Sentry	600,000
Thomson Reuters Foundation	600,000
Tottenham Hotspur Foundation	600,000
Postcode Innovation Trust	
Brighton & Hove Food Partnership	80,000
CERT	60,000
Expert Impact	100,000
GMCVO	50,000
Hatch	230,000
Impact Hub Kings Cross	100,000
Lighthouse	231,200
Lincolnshire Community Foundation	60,000
Mobiloo	160,000
Offplay	99,932
Oxford Wood Recycling	250,000
Plymouth VCSE	60,000
Project Scotland	100,000
Social Enterprise UK	185,823
Social Investment Scotland	60,000
Urban Biodiversity	200,000
YMCA Plymouth	250,000
Postcode Planet Trust	
African Parks	700,000
APOPO	700,000
Clinton Foundation	198,786
Cool Earth	100,000
Fauna & Flora International	250,000
Global Witness	350,000
Royal Zoological Society of Scotland	350,000
Zoological Society of London	350,000
Postcode Sport Trust	
Cruyff Foundation	450,000
Greenhouse Sports	450,000

Homeless World Cup	100,000
Lord's Taverners	800,000
Newcastle United Foundation	450,000
Street League	800,000
Women in Sport	100,000

Postcode Support Trust	
Alzheimer's Society	550,000
Dementia Adventure	400,000
Grandparents Plus	300,000
Re-engage (Contact The Elderly)	400,000
The Food Train	91,000
The Silver Line	250,000
Volunteering Matters	750,000

Postcode Community Trust	
#MileShyClub	3,988
2Faced Dance Company Limited	11,000
A.W.L.N Foals and Horses Sanctuary	10,000
Abbeyfield Strathgryffe Society	8,100
Aberdeen Association of Social Service T/A VSA	15,000
Aberystwyth and District Amateur Swimming Club	2,000
Action East Devon	14,225
Action for Children	18,451
Action Transport Theatre	12,200
Age Concern Wandsworth	17,472
Age UK Bristol	20,000
Age UK Horsham District	17,985
Age UK Maidstone	15,285
Age UK South Lakeland	19,875
Age UK Waltham Forest	7,296
Alzheimer Scotland	10,000
Ampersand Projects CIC	2,000
Andrew Simpson Sailing Foundation	19,440
Armadillo Art Experience CIC	1,920
Autism Wessex	9,146
Berkshire Multiple Sclerosis Therapy Centre Ltd	4,640
Berwick Cricket & Sports Club	2,000
Better at Birchwood	2,000

Biggar Museum Trust	3,000
Black Country Touring	9,553
Blackburn United Community Sports Club	9,673
Blackheath Squash and Rackets Club	2,000
Bristol Aero Collection Trust (Aerospace Bristol)	6,810
Bromley by Bow Centre	12,288
Bubble Club CIC	2,000
Bungalow Youth Project (run by Buckfastleigh Community Development Project (Trust))	5,000
Calf Street Park Action Group	1,924
Callander Youth Project Trust	16,051
Cambridge Breastfeeding Alliance	10,660
Cambridge House and Talbot	6,953
Canoe Wales	2,000
Carlisle United Community Sports Trust	18,000
Celf-Able Limited	1,636
Centre 81 Ltd	15,912
Centre of Sign Sight Sound	20,000
Chain Reaction Theatre Company	14,491
Child Dynamix	11,167
Choices Islington	20,000
Community Impact Bucks	10,000
Cornwall BMX Racing Club	2,000
Cycling Without Age Bristol	2,000
Cymaz	8,280
Dementia Together Wirral	5,000
Dorchester Arts	1,000
Dundee Contemporary Arts Ltd	13,800
DZ Circus School	2,000
Eagles Community Foundation	20,000
Edinburgh International Magic Festival	2,000
Ekota Care Trust Limited	7,998
Enham Trust	13,995
Everyone 4 Sport CIC	2,000
FACT - Fighting All Cancers Together	18,800
Family Action	13,080
Forward Arts CIC	2,000
Four Estates Limited	18,188

Frenford Clubs	2,000
Friction Arts	2,000
Friends of Central Park	1,830
Friends of Salisbury Medical Practice	14,438
Friends of St Marks	2,000
Fulham Good Neighbour Service	20,000
Galloway's Society for the Blind	4,770
Gaydio Community Interest Company	2,000
Get Set 4 Tennis CIC	2,000
Golden-Oldies	13,000
Goodwin Development Trust	15,000
Greenbank Project	16,300
Hackney Council for Voluntary Service	19,945
Halo Children's Foundation	9,940
Hands Up For Downs	4,440
Happy Times Activities	2,000
Harbour Cancer Support	1,620
Harmoni Cymru CIC	1,472
Headway Arts	8,660
Headway East London	5,555
Headway East Sussex	15,275
Health and Local Food for Families (HALFF)	18,789
Held In Our Hearts (formally SANDS)	20,000
Helm Training LTD	10,000
Heroes on the water uk	2,500
Hinckley Town Tennis Club	1,912
Home-Start Cambridgeshire	20,000
Home-Start Camden and Islington	17,306
Home-Start Richmond Kingston and Hounslow	20,000
Home-Start Richmondshire	2,448
Honiton 729 Club	10,000
Hoop Dreams Basketball Club	2,000
Hornets Community Boxing Club	1,316
Hospice at Home West Cumbria	14,428
Hot Chocolate Trust	19,245
Hull FC Rugby Community Sports and Education Foundation	16,000
Inclusive Sports Academy CIC	2,000



Involve Kent	15,000	Pathways to health	4,400	The Billy Project	2,000
Ivybridge Community Arts	2,000	Paul's Cancer Support Centre	14,877	The Cavernoma Society	20,000
Kent Phoenix Youth American Football	2,000	Penhaligon's Friends	6,800	The Choir with No Name	19,407
Kids Can Achieve	10,800	Pioneer Projects (Celebratory Arts Ltd)	9,542	The Citizens Theatre Ltd	13,400
Kids Run Free (KRF)	8,070	Positively UK	20,000	The Cowshed	13,215
Lewisham Youth Theatre	20,000	Queens Park Tennis Club CIC	2,000	The Glasgow Barons	11,300
Lifelites	19,938	R.I.S.E	12,039	The Joshua Tree Holiday House and Support Centre for Courageous kids and their families	3,240
Lismore Community Trust	5,880	Reading Mencap	9,153	The Learning Bus CIC	2,000
Live Well with Cancer	2,000	Reading Repertory Theatre	19,832	The Link Visiting Scheme	14,310
Llangennech RFC Juniors Section	1,800	Red Zebra Community Solutions	18,480	The Listening Place	19,800
Local Giving	550,000	Richard House Trust	9,146	The Living Paintings Trust	10,000
Lollipop (York and District)	13,500	Road Victims Trust	10,000	The Lullaby Trust	19,692
Longfield Hospice Care	4,735	Rochdale AFC Community Sports Trust	15,000	The Multiple Sclerosis Society Milton Keynes	10,826
Love Music Trust	20,000	Royds Community Association	16,104	The Normandy Community Therapy Garden	4,840
Macrobert Arts Centre Limited	10,814	Runciman Apse Trust	10,000	The Otakar Kraus Music Trust	7,500
Make and Create Arts	1,780	SafeWise	20,000	The Roundhouse Trust	10,000
Meningitis Now	15,953	Sam's Diamonds	5,000	The Spitz Charitable Trust (The Spitz)	10,000
Merseyside IBD Group Community Interest Company	2,000	Scampdoodles Charity	18,004	Theatre Nemo	13,570
MND Scotland	10,000	Scottish Book Trust	20,000	TheRockinR Charity	19,840
Moor Allerton Elderly Care	16,362	Scottish Borders Rape Crisis Centre	20,000	TIC+ (Teens in Crisis)	20,000
Move Momentum	2,000	Shrewsbury House Community Association Limited	2,900	Tintwistle Athletic FC	2,000
MySight York	5,000	SK Community Trust	10,350	Torrington Silver Band	1,038
National Botanic Garden of Wales	18,480	Somali Welfare Trust	10,000	Total Insight Theatre	13,157
National Museums and Galleries on Merseyside (legally known as National Museums Liverpool)	1,555	South Downs Leisure	5,393	Trekstock	19,849
New Generation Community Trust	6,748	Southend United Community & Educational Trust	20,000	TRIP Community Transport	18,000
Newlyn Trinity Methodist Church	6,028	SPEAR Housing Association Ltc	15,000	UK North Blind Sailing Association (UKNBSA)	11,825
No5 Young People	17,974	Spitalfields Festival Limited	12,000	Unite the Beat in the community	1,960
North Devon Hospice	8,500	St Ives & Warboys Cricket Club	2,000	Valleys Kids	20,000
North Shields Polytechnic Club	7,450	St James Trust (Seaford)	13,500	Venture Scotland	20,000
North Wales Snowsport Club	2,000	Stand North Wales CIC	2,000	Vision Homes Association	17,500
Ok Our Kids	2,000	Stick 'n' Step	17,211	Voluntary Action South Leicestershire	3,468
Okehampton and District Community Transport Group	20,000	Stirchley Art Room CIC	2,000	Wakefield Trinity Community Trust	14,000
On Course Foundation	9,600	Stornoway Sailing Club	2,000	Walkers are Welcome Montgomery	1,210
Orchestras Live	20,000	Stroud Beresford (Stroud Women's Refuge)	7,700	Wallace & Gromit's Children's Foundation	20,000
OWEN Open Water Education Network	1,000	Sussex Pathways	16,442	Waltham Forest Community Transport	10,400
Papworth Trust	19,592	The Alma Project	15,399	Wellspring Scotland	13,950
Partickhill Bowling & Community Club	2,000	The Aloud Charity	20,000	West Warwicks Boxing Club	2,000

Wickersley Youth Junior Football Club	1,750
Wilson Stuart School Fund	19,885
Yorkshire Life Aquatic	2,000
You in Mind	8,502
Young at Heart Club	2,000
Young Men's Christian Association, Scarborough Branch	19,989
Young People's Puppet Theatre	7,499
Your Back Yard CIC	2,000
<b>People's Postcode Trust</b>	
15billionebp	15,604
Aaina Community Hub	18,500
Action Against Abduction	20,000
Afan Arts	10,000
Afghanistan and Central Asian Association	18,259
African Women's Vision for Peace and Development	2,000
Age Connects North East Wales	11,337
Age UK Bath & North East Somerset	15,331
Age UK Carlisle and Eden	13,000
Age UK Mid Devon	19,866
Amicus Trust Limited.	18,041
Assisted Reading for Children	15,360
Aubergine Cafe and Events CIC	2,000
Audacious Foundation	14,102
Beating Time	18,000
Bedford Street Community Company Ltd	12,000
Bethel Trust Port Talbot	6,000
Bexley Mencap	17,500
Bradford Deaf Community Association	18,300
Brass	3,800
Breakthro Llanelli	1,550
Brent Mencap Ltd	8,726
Bridging the Gap Islington	5,150
Bright Sparks Play Groups	11,394
Bristol Refugee Rights	20,000
Building Self Belief CIO	9,100
Caerphilly Borough Mind	7,440
Can Cook	20,000

Cascade Theatre Company	9,500
Centre of Light	7,700
Chayn CIC	2,000
Children's Discovery Centre East London	12,950
Christ Church Armley Community Projects	13,774
Citizens Advice Bournemouth & Poole	18,541
Citizens Advice Gateshead	18,000
Citizens Advice Tunbridge Wells & District	15,000
CLEAR Buckhaven	12,960
Co Creative Solutions Limited	2,000
Contact a Family	20,000
Cornwall Marine Academy (CMA)	2,000
Corwen Juniors - Mini Football	2,000
Crossroads Derbyshire	17,446
Cumbernauld Poverty Action	15,030
Daisy Programme	17,570
Debate Mate Schools Limited	20,000
Doncaster Rape and Sexual Abuse Counselling Services	16,125
East Dunbartonshire Women's Aid SCIO	14,430
East Kent Mencap	18,336
Elmbridge Rentstart (UK) Ltd	15,000
Enterprise Junction	16,000
Equation	11,424
Evelyn 190 Community Trust	20,000
Everyday English	2,000
Families First Bedfordshire	20,000
Family Support Work	4,000
Filia	7,000
Film London	20,000
First Days Children's Charity	12,078
Forde Park Community Project	15,000
Fortalice Limited	18,300
Friends of Castledon School	20,000
Friends of Essex & London Homeless	16,000
Friends of Newington Recreation Ground	2,000
Future Living Hertford	11,242
Glasgow Film Theatre	6,000

Glasgow Womens Aid	14,142
Goals Beyond Grass	16,400
Grassmarket Community Project	19,600
Great Yarmouth Refugee Outreach and Support	15,640
Grove Park Charitable Trust	10,000
Haringey	18,900
Haringey Law Centre	20,000
Hartlepool Town Pastors	1,000
Hayaat Women Trust	9,426
Headway Nottingham	14,855
Health for All Leeds Limited	19,685
Helping the Homeless into Housing	3,500
Hestia Housing and Support	20,000
Hi Kent	20,000
Home-Start East Sussex	17,032
Home-Start Trafford & Salford	17,654
Honeybee Farmacy C.I.C	2,000
Hope Housing Training & Support	13,456
in2scienceUK	20,000
Incredible Farm CBS Ltd	2,000
Islington Mind	19,965
Junction 49	1,620
Junction Arts Ltd	20,000
Junior League of London	2,000
Keighley Healthy Living Network	11,966
Key4Life	19,828
Lancashire Community Finance Trust Limited	14,533
Learn English at Home	15,000
Leeds Development Education Centre	15,500
Leeds Women's Aid	9,680
Lichfield Garrick Theatre	4,179
Liverpool Lighthouse	15,948
Living It Up Events CIC	1,864
Living Options Devon	20,000
Llanhilleth Miners Institute	20,000
London Transport Museum	15,000
Melin Community Trust	20,000
Mentoring Plus Bath & NE Somerset Ltd	20,000



Merkinch Partnership	9,240	Reading Ladders	9,640	The Arts Depot Trust Ltd	5,000
Mid Bedfordshire Citizens Advice Bureau, trading as Citizens Advice, Mid Bedfordshire	10,000	Refugee and Migrant Forum of Essex and London (RAMFEL)	18,793	The Arts Emergency Service	17,000
Middlesbrough Citizens Advice Bureau	18,000	Refugee Resource	12,176	The Big Help Project	4,987
Mind Chat Ltd	1,950	Remedi	20,000	The Cyrenians (Changing Lives)	19,250
MTIB	19,933	RISE Learning Zone CIC	1,950	The Felix Project	19,984
Music In Detention	19,964	Ron Todd Foundation	18,000	The Footprint Trust Ltd	20,000
Muslim Women's Welfare Assoc.	7,880	Rosetta Life	15,500	The Footprints Project	18,927
National Association of Child Contact Centres	18,026	Sacar	19,891	The Hope Hub	4,934
Newcastle-upon-Tyne Y.M.C.A.	19,170	SafeHands for Mothers	10,000	The LS14 Trust	18,500
Newington Green Action Group (NGAG)	15,000	Safer Living Foundation	20,000	The Mulberry Centre	18,600
NewStarts	20,000	Saheliya	18,704	The Royal British Legion Poppy Factory Limited	16,300
Next Door But One (NDB1)	1,309	Salford Foundation Ltd	20,000	The Royal National College for the Blind	12,475
North Argyll Carers Centre Ltd	10,015	Savera UK	17,500	The School Bank West Lothian	20,000
North Birkenhead Development Trust	19,940	Scottish Council of Jewish Communities (SCoJeC)	15,000	The SPACE	2,000
North Manchester Community Partnership	9,300	Scottish Families Affected by Alcohol and Drugs	19,047	The Wilberforce Trust	5,398
North Warwickshire Citizens Advice Bureau	20,000	Sheltered Work Opportunities Project	9,564	The Women's Centre Cornwall Ltd.	17,479
Norwich and Norfolk OCD Voluntary Support Group	13,368	SignHealth	19,400	Tim Parry Johnathan Ball Peace Foundation	20,000
Nottinghamshire Hospice	15,000	Sikh Community Centre & Youth Club SCCYC	14,700	Time for Inclusive Education (TIE)	10,000
NuWaves Youth Support CIC	2,000	Skills Enterprise	13,123	Tir Coed	20,000
NW Nappy Collaborative C.I.C.	2,000	Skills Exchange SCIO	13,500	Tower Hamlets Education Business Partnership Limited	14,705
Oasis Aquila Housing operating as Oasis Community Housing (OCH)	20,000	Slide dance ltd	5,000	Transformation for Veterans	9,980
Old Hall Peoples Partnership	20,000	South Yorkshire Refugee Law & Justice	20,000	Trelya	14,000
Opportunity Sports Foundation	6,000	Special Stars Foundation	4,416	Turn to Starboard	18,000
Options in Life	11,000	Spikin Autism and more	1,800	Twinkleboost CIC	1,920
Osmani Trust	19,994	St Albans District Citizens Advice Bureau	14,448	United Response	13,334
Oxford Citizens Advice Bureau	19,199	St Anns Advice Group	18,831	Victims First Northumbria	19,992
Oxford Diocesan Council for Social Work Inc	19,869	St Joseph's Hospice Hackney	20,000	Vision Care for Homeless People	17,500
Oxford Wood Recycling	16,406	St Martins Centre For Health And Healing	20,000	Warwickshire Vision Support (formerly Warwickshire Association for the Blind)	17,594
Oxfordshire My Life My Choice Association	3,800	Stars Children's Bereavement Support Services	15,240	Water Orton & District Tennis Club	1,934
Parity for Disability	4,300	Stockton and District Advice and Information Service (SDAIS)	16,644	Waverley Care	20,000
People Matter Trust	13,040	Streetgames	13,930	Wear Mencap	1,600
Person to Person Citizen Advocacy	5,000	Streetwise Opera	6,500	WellChild	20,000
Plymouth Communities Befriending Consortium	1,896	Sufra NW London	19,744	Whitechapel Centre	14,995
Positive 21	5,000	Support U	15,647	Wirral Holistic Care Services	17,650
PramDepot CIC	2,000	TCC (Trefnu Cymunedol Cymru / Together Creating Communities)	19,679	Y Services for Young People	20,000
Quo Vadis Trust	19,165	The Action Group	19,853	YMCA Bedfordshire	18,000
Reach Community Projects	19,904			Young and Inspired	12,000
				Young Enterprise	16,190

Postcode Local Trust					
1st Harmondsworth Scout Group	1,879	ecoACTIVE	7,750	Haygrove Community Gardens	19,382
Abbey Physic Community Garden	19,229	Element Society	18,990	Hazel Hill Trust	17,620
Action for Conservation	20,000	EMIH Ltd (The Deep)	16,750	Headlands Area Residents Association	1,349
ActivLives	20,000	Energise Sussex Coast	2,000	Heatons' Men In Sheds	1,990
Age UK Lancashire	7,723	Families For Individual Needs and Dignity (FiND)	7,656	Hebridean Whale and Dolphin Trust	20,000
Age UK Lewisham and Southwark	15,543	Findhorn Hinterland Trust	5,000	Hereford Yoga CIC	2,000
Arnos Vale Cemetery Trust	16,896	Fintry Community Council	2,000	Heritage Care - Community Options - a branch of Heritage Care	7,709
Ash Millennium Wood	500	Flitton Church Hall	750	Herne Bay Pier Trust	20,000
Axmouth Playground Association	2,000	Forest Gate Community Garden CIO	2,000	HF Trust Ltd	15,000
Belhelvie Community Trust	9,874	Frampton Cotterell Playing Fields Management Committee	20,000	Hightown Beach Clean Group	578
Bermondsey Community Kitchen	1,800	Friends of Centre Point and Holme Wood	500	Hillingdon Mind	9,900
Body & Soul	14,663	Friends of Congleton Park	2,000	Hunters Hill Charitable Trust	1,250
Brecknock Federation of Young Farmers' Clubs	12,000	Friends of Downlands Court	3,500	Independence from Drugs & Alcohol Scotland	17,950
Brentor Village Hall & Playing Field	6,000	Friends of Eardington Nature Reserve	1,985	Innovate Trust	15,444
Cadoxton Conservation Group	2,000	Friends of Five Oak Green Recreation ground	15,345	Ipswich Transport Museum Limited	20,000
Care for Veterans	20,000	Friends of Hill House Park and Gardens	1,925	Isle Access	18,703
Castlehaven Community Association	19,708	Friends of Mere Sands Wood	2,000	Islington Play Association	18,000
Chardstock Community Hall Trust	8,895	Friends of Newton Community Park	1,949	John Muir Trust	8,001
Chardstock Park Trust	520	Friends of Ruskin Park	19,648	Keep Scotland Beautiful	19,646
Chopwell Regeneration CIC	2,000	Friends of Spa Woods	2,000	Keep Wales Tidy	20,000
Chulmleigh Playing Field Association	17,500	Friends of Swannies	2,000	Keighley District Scout Council (Low Wood)	19,500
City of Bradford YMCA	16,640	Friends of Tawd Valley	1,990	King George Memorial Playing Field Rothiemay Trust	11,961
Coeden Fach Community Interest Company	2,000	Friends of the City of Swansea Botanical Complex	18,250	Knowle Village Hall	13,500
Colwyn Bay Conservation and Environment Federation	2,000	Friends of the Lake District	10,000	Kustom Kruizers	1,516
Communigrow	13,000	Friends of the Lower Derwent Valley Conservation Group	2,000	Learning Through Landscapes	561,979
Community Housing and Therapy	11,201	Friends of Victoria and Westburn Parks, Aberdeen	2,000	Linacre Bridge Community Hub	20,000
conservation charity	19,648	Friends of Westonbirt Arboretum	16,000	Lincolnshire Rivers Trust	13,718
Cornwall Seal Group Research Trust	19,940	Fulbeck Cricket Club	2,000	Little Earners	1,027
Culpeper Community Garden	4,867	G52	1,996	Livability	20,000
Cymdeithas Eryri Snowdonia Society	20,000	Global Action Plan	18,786	Living River Foundation	1,815
Dane Valley Woods	1,350	Good companions bolton	19,993	Make It Happen Birkenhead Limited	1,720
Dartmoor Activity Centre	20,000	Greenfingers Charity	18,484	Manchester Cathedral Country Home	12,640
Dartmouth Green Partnerships	20,000	Growing Concern Association	1,149	Medway Plus	10,000
Dunblane Development Trust	4,200	Gwealan Tops Adventure Playground	20,000	Milestones Trust	10,000
East-the-Water in Bloom Group	2,000	Harrow Heritage Trust	12,471	Mind Aberystwyth	19,553
Eco Drama	18,030	HARV Outreach Team	20,000	Minginish Community Hall Association	16,750
				Moretonville Junior Football Club	1,750



My Outdoor Classroom CIC	1,700	Severn Rivers Trust	20,000	The Springhead Trust Ltd	19,526
Nairn Bowling Club	14,400	SkatePal	14,918	The Tree Council	20,000
National Flood Forum	18,150	South East Wales Rivers Trust	6,169	Thorpe Edge Community Project	19,000
Nest Nurturing Futures CIC	1,806	South London Botanical Institute	20,000	Tortworth Forest Centre CIC	2,000
No Walls Gardens CIC	2,000	Spring Housing Association Limited	18,600	Transition Homes Community Land Trust	19,840
North Kelvin Meadow Campaign	2,500	St Andrews Hall	5,000	Transition Kings Cliffe	2,000
North Walsham Play	10,130	St Nicks	16,670	Trust for Oxfordshire's Environment (TOE2)	9,734
Northern Allotment, Leisure and Community Gardens	18,000	St Thomas Church PCC	1,500	Trust Links Ltd	20,000
Northern Corridor Community Volunteers	2,000	St. Mary's Gig Club	2,000	Tuppenny Barn Education	14,220
Northern Region Allotments Association	2,000	STAA Limited	19,984	Tyne and Wear Archives and Museums Development Trust	19,961
Northowram Tennis Club	2,000	Stoke Goldington Playground	11,103	Tyne Rivers Trust	19,742
Ocean Youth Trust Scotland	19,916	Stonehill Community Gardens	9,135	Uig Development Trust SCIO	3,620
On The Verge	754	Sunbury and Walton Unit 327 of the Sea Cadet Corps	20,000	Unicorn Preservation Society	2,430
Open Trail	5,500	Supporting People Achieving Real Choice	16,751	Unity Supported Housing Ltd	2,000
Our Yard	2,000	Sustainable Life	1,900	Wentworth Woodhouse Preservation Trust	20,000
Pan Together	4,620	Tamworth Volunteer Litter Pickers	1,000	West Cumbria Care and Support (trading as West House)	2,000
Park Life Heavitree	10,000	Tanglewood Days CIC	2,000	Westcountry Rivers Trust	20,000
Participate Projects	8,400	Team Jak Foundation	20,000	Whiffle Pig C.I.C	2,000
Pembrokeshire Coast National Park Trust	16,000	The Arkwright Society Limited	19,845	Wigan Flashes Conservation and Community Group	17,344
Pennard Gardening Society	1,500	The Barlow Institute	20,000	Wild About Clifford	1,150
Pennyhooks Farm Trust	19,000	The Bluecoat	20,000	Wildside Activity Centre	13,997
Peterborough Environment City Trust	15,703	The Bulldog Trust Limited	150,000	Willsbridge Mill Community Refresh CIC	1,980
Phoenix Canoe Club Limited	6,234	The Children's Allotment Limited	1,936	Wilnecote Sports & Recreation Association	12,000
Plantlife International - the wild plant		The Countryside Restoration Trust	15,000	Wimbledon and Putney Commons Conservators	3,000
Play and Stay at Dyserth	20,000	The Enbarr Foundation CIC	2,000	Windmill Hill City Farm Ltd	18,560
Pontsticill Community Group	932	The Friends of High Lane and Brookside Parks	2,000	Woodlands Community Development Trust	9,696
Prism Youth Project	18,000	The Friends of Pleasley Community Orchard	1,600	Worsley Hall (Wigan) Community Resource Centre	9,989
Quick Response Memorial Woodland	18,500	The Friends of St Ann's Well Gardens, Hove	9,200	Wyre Cricket Club	1,488
Re-Union Canal Boats Limited	16,700	The Friends of Tower Hamlets Cemetery Park	20,000	Yarpole Village Hall	6,000
Reading YMCA	7,500	The Friends of Tregoniggie Woodland	2,000	Yorkshire Dales Rivers Trust	20,000
Red Machine Allotment Association	1,500	The Gattton Trust	2,108	Zoological Society of East Anglia Limited	20,000
River 2015	19,962	The Japanese Garden at Cowden Castle SCIO	5,964		
Royal Crescent Allotments Association	2,000	The Lawnmowers Independent Theatre Company Ltd	8,090		
Ruislip-Northwood Cooperative Smallholding & Allotment Society	2,000	The Maytree Respite Centre	9,945		
Scotswood Natural Community Garden Ltd	20,000	The Orchard Project (Cause) Ltd.	20,000		
Seavington Playing Field Association	17,987	The Parc Y Werin Committee	2,000		
Severn Gorge Countryside Trust	20,000	The Rooftop Bees	2,000		
		The Snappy Trust	6,000		

# Governance

## **Licence and regulation**

Postcode Lottery Limited is incorporated in England and Wales. It is licensed and regulated by the Gambling Commission, the regulatory body for gambling in Britain. Postcode Lottery Limited is the trading name.

As an external lottery manager, People's Postcode Lottery manages multiple charity lotteries on behalf of 52 charities and good causes.

Our operations are designed to ensure we meet set regulatory objectives: being crime-free, fair and open, and protecting children and other vulnerable persons from being harmed by gambling. Safeguards exist to ensure these objectives are met, and to ensure we operate with integrity. Winning postcodes are selected at random using certified draw-engine software in the presence of an independent adjudicator. People's Postcode Lottery is ISO27001 accredited – the widely recognised 'gold standard' in information security – and was among the first companies in the UK to be awarded the data protection standard BS10012. We cap the number of tickets per player to restrict the maximum amount which an individual could spend, and provide training to our customer experience team so that they feel confident dealing with people in vulnerable circumstances. We work to prevent underage play and problem gambling.





Place2Be works in schools to improve children’s mental health. Thanks to players, they can reach even more youngsters to provide emotional and well-being support. Funds awarded from Postcode Children Trust.



12 Mansfield players won £390,000 between them.





A £3 million prize was shared between 377 players in York's Y031 9 postcode sector.



**Trading address**

28 Charlotte Square, Edinburgh, EH2 4ET, UK

**Registered office**

2nd Floor, 31 Chertsey Street, Guildford, Surrey. GU1 4HD

Email [communications@postcodelottery.co.uk](mailto:communications@postcodelottery.co.uk)

For corporate news and information [www.postcodelottery.info](http://www.postcodelottery.info)

For prizes and playing [www.postcodelottery.co.uk](http://www.postcodelottery.co.uk)

Company number 04862732

