

People's Postcode Lottery

Annual Report 2018



OUR YEAR IN NUMBERS

A TOTAL OF
£371 MILLION
RAISED FOR CHARITIES
AND GOOD CAUSES TO DATE

A minimum of
32%
from each subscription
goes to charities and
good causes

£5.5 MILLION
distributed to 32 charities
to tackle loneliness*

Three Community
Programmes Trusts
awarded
£8 MILLION
in funding,
awarded **4,244**
grants and supported
1,428 partner
projects

5,500
CHARITIES AND
GOOD CAUSES
SUPPORTED
1,500
MORE THAN
IN 2017

£116.9 MILLION
RAISED IN 2018

July saw our
biggest ever
Postcode Millions
with **980**
Dukinfield winners
sharing £3 million

£1.08 MILLION
awarded to support
social enterprises
through
Postcode Innovation Trust

53
NEW TEAM
MEMBERS



2018



Funding enables The Conservation Volunteers to connect people with green spaces.



Mary's Meals has received over £1.7 million in funding thanks to players.

Contents

- 2 A Message From Our Directors
- 4 A Shared Vision
- 6 Performance With Purpose
- 8 Let Us Do More
- 10 Our Journey
- 14 Supporting Charities and Enabling Change
- 22 How Player Support Has Made a Difference
- 24 Players and Winners
- 27 People's Postcode Lottery Ambassadors
- 28 Financial Reporting
- 30 Our Team
- 32 Good Operations



Our team jump for joy before meeting Falkirk winners.



APOPO'S HeroRATs detect landmines and tuberculosis using their extraordinary sense of smell.



A Message From Our Directors



Annemiek
Hoogenboom,
Country Director

“We believe the world is better off with strong social organisations. There can be no change without them.”

Since the beginning, we have constantly strived to live up to these words and make a difference. Raising money for charities and good causes, while increasing awareness of their work, is at the heart of People’s Postcode Lottery. For us, that is what it is all about.



Clara Govier,
Managing Director
and Chair

2018 has been another exciting and successful year. More than three million players raised £116.9 million for 5,500 charities and good causes. That is £24 million more than in 2017 and those funds benefited an additional 1,500 good causes.



Lorna Menzies,
Managing Director
and Head of Television

During 2018, players raised £8 million for thousands of local community programmes and partner projects across England, Scotland and Wales. Funding of £5.5 million* was distributed to 32 charities and good causes to help build meaningful connections in communities to tackle loneliness and social isolation.

Funding of £1.08 million was awarded to social enterprises and social investment initiatives. Both streams of funding, awarded from the Postcode Innovation Trust, provide a new, innovative and sustainable way of building entrepreneurial spirit and strengthening capacity, as well as building community-driven social change.



Rob Letham,
Managing Director
and Head of Finance

Money raised thanks to players of People’s Postcode Lottery is having a hugely positive impact. These funds are transforming individual lives and whole communities by helping address some of the most pressing and significant problems facing society. We are privileged to help create and drive change for a better world.

*Funds awarded from Postcode Animal Trust, Postcode Culture Trust, Postcode Care Trust, Postcode Children Trust, Postcode Heroes Trust, Postcode Support Trust and Postcode Sport Trust.



George and Amal Clooney and Nice Nailantei Leng'ete were special guests at our annual Charity Gala.



Supported charities celebrate the funding they have received thanks to player support.

"For a better world" was the theme of our most recent Charity Gala, the annual event where we recognise and celebrate the remarkable, inspiring and transformative work of supported charities and good causes.

Alongside charities and partners working for a better world, we welcomed special guests George and Amal Clooney and Kenyan human rights activist; Nice Nailantei Leng'ete. In honour of their passion, commitment and courage to create meaningful change, these special guests received a Postcode Hero Award. The Clooney Foundation for Justice received a total award of £1 million to support its work in defending the human rights of some of the world's most vulnerable people.

Nice Nailantei Leng'ete was presented with an award of £500,000 for Amref Health Africa UK to further work to end female genital mutilation/cutting and give girls and young women in Africa a future.

All that was achieved over the past year would not be possible without talented and committed people and we would like to thank our fantastic team at People's Postcode Lottery for their contribution to our success. Throughout 2018, we welcomed more than 50 new team members across the business. Clara Govier was promoted to managing director and chair, and Robert Letham, our head of finance, was appointed as a managing director – moves which further strengthen the management team.

Our year on year growth is a great achievement. We want to do more, but, fundraising by charity lotteries is strictly limited by law. These outdated lottery limits are affecting charities, big and small, meaning they are losing out on vital funding. We want this to change. That is why People's Postcode Lottery is calling for the UK Government to let us do more and raise the limits.

We want to ensure charities and good causes receive the funding they deserve and need.

Together we are committed to making a difference and building a future for People's Postcode Lottery that is even more exciting than our past.



Players raised £1 million for V&A Dundee, Scotland's first design museum.

A Shared Vision

People's Postcode Lottery is owned by Novamedia BV, a social enterprise with the goal of contributing to a better world through the operation of charity lotteries and other enterprises.

The very first Postcode Lottery was launched in the Netherlands in 1989. Building on its success, People's Postcode Lottery was launched in 2005 and the Postcode Lottery family has continued to grow ever since. As well as the Netherlands, we have sister lotteries in Sweden, Germany and, as of this year, Norway.

Together with our sister lotteries, we were ranked as the third largest private charity donor in the world in 2017 and we are the second biggest in Europe.

All the Postcode Lotteries are united by a shared mission – to raise funds for charities and good causes and increase awareness of their work. We believe the world benefits from strong social organisations. Through flexible, long term, unrestricted funding, positive change can be realised, transforming lives and communities across the world.



PDSA has received over £8.5 million to provide services for sick and injured pets like Scrabble the dog.



Walking charity, The Ramblers has received over £7 million in funding thanks to players.



Newcastle United Foundation encourage people of all ages to get active and develop their confidence.



Meal Makers brings together those who love to cook and share food, with a local older neighbour.



Thanks to player funding of £2.1 million, Marine Conservation Society is protecting our seas for generations to come.



PDSA offer free health checks for pets thanks to support from players.



Thanks to players, Magic Me hosted cocktail parties in care homes where volunteers and residents were able to socialise together.

Performance With Purpose

People's Postcode Lottery is Fun, Courageous, Sharing and Sustainable. These four core values are our compass for making choices and decisions every day.

We are an impact organisation. Since being established in 2005, a total of £371 million has been raised by players with £116.9 million raised in the past year alone, 26% more than in 2017. The reach of this funding and its positive impact is vast. With most of the funding being unrestricted, it allows charities, in particular smaller ones, to leverage and secure additional money. Therefore this funding is enabling charities and good causes to achieve remarkable things, transforming lives and communities in Britain and beyond.

Regulated by the Gambling Commission, under the Gambling Act 2005, People's Postcode Lottery manages multiple lotteries, on behalf of 18 charitable grant-giving trusts and 29 well known charities and good causes. Funds raised, thanks to players, are either retained by the promoting society for their own charitable purposes or are distributed to a range of charities and good causes through 18 independent charitable trusts.



Theirworld has received £2.9 million in funding to help ensure that every child has the best start in life and has a safe place to learn.



As a Dream Fund winner in 2018, Search Dog Heroes received £1 million to use trained search dogs and scent bottle kits to find missing people faster.



Breast Cancer Care helps women who have come through cancer resume a normal life through their Moving Forward courses.



Four players from Audenshaw won £294,334 each when their postcode won the Postcode Millions top prize in April.

Let Us Do More

For over a decade People's Postcode Lottery players across Britain have been raising funds for charities and good causes.

The charity lottery sector is a vital part of the funding landscape, raising hundreds of millions each year.

Yet charity lotteries are the only type of fundraising to have strict limits imposed on them by law, capping the amount of money such lotteries can raise. Outdated limits mean charities lose out.

People's Postcode Lottery called on the UK Government to update the law and let us do more by raising the annual sales limit for a charity lottery to £100 million. This is the Government's own preferred option and one which would futureproof the sector, allowing charity lotteries room to grow.

This new limit could be introduced through a simple legislative change, at no cost to the treasury or tax-payer. It would unlock additional funding for charities and good causes. Recent Gambling Commission modelling found that charity lottery sales do not impact on the National Lottery and, in fact, the different funding sources complement each other, enabling charities and good causes, in different ways, to carry out their vital work.



Wildfowl & Wetlands Trust encourage people to engage with wetlands and support conservation.



We want to ensure charities and good causes receive the maximum amount of funding possible.

Oxfam has received £6.6 million thanks to player support, to tackle inequality and discrimination against women and combat poverty.

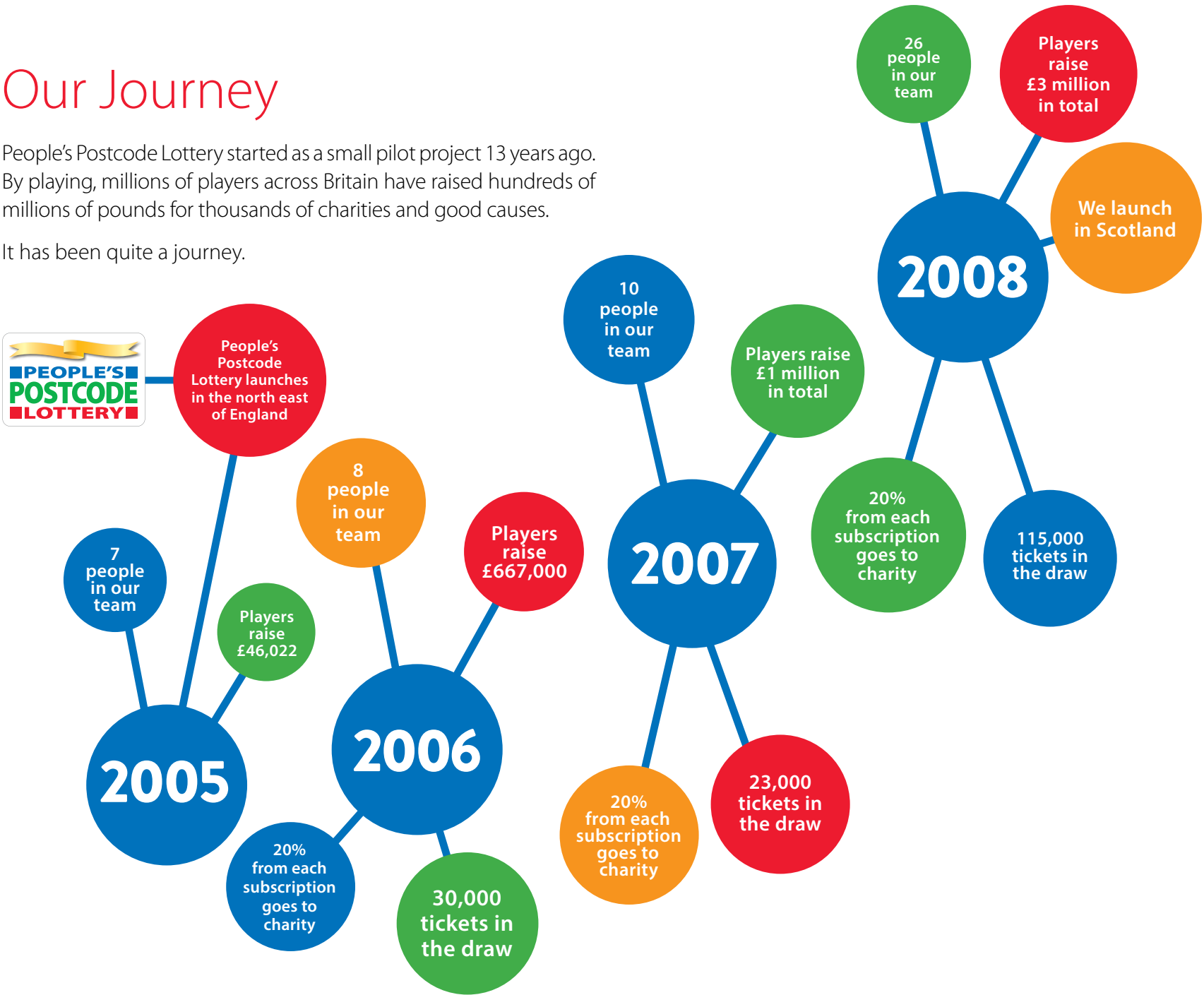
Players throughout Britain are helping create lasting social and environmental change while also having the chance to win prizes.

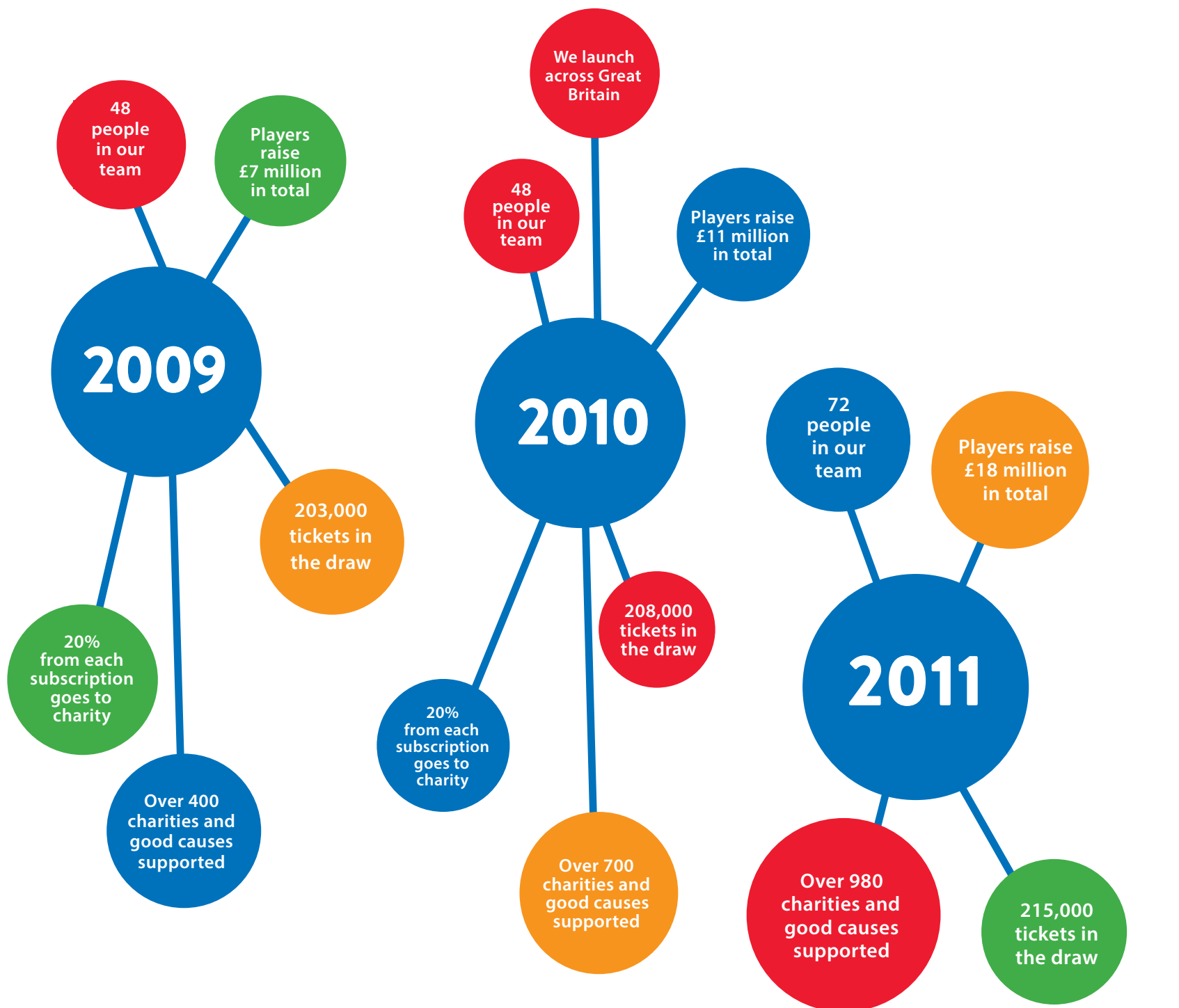
£116.9M
raised in 2018



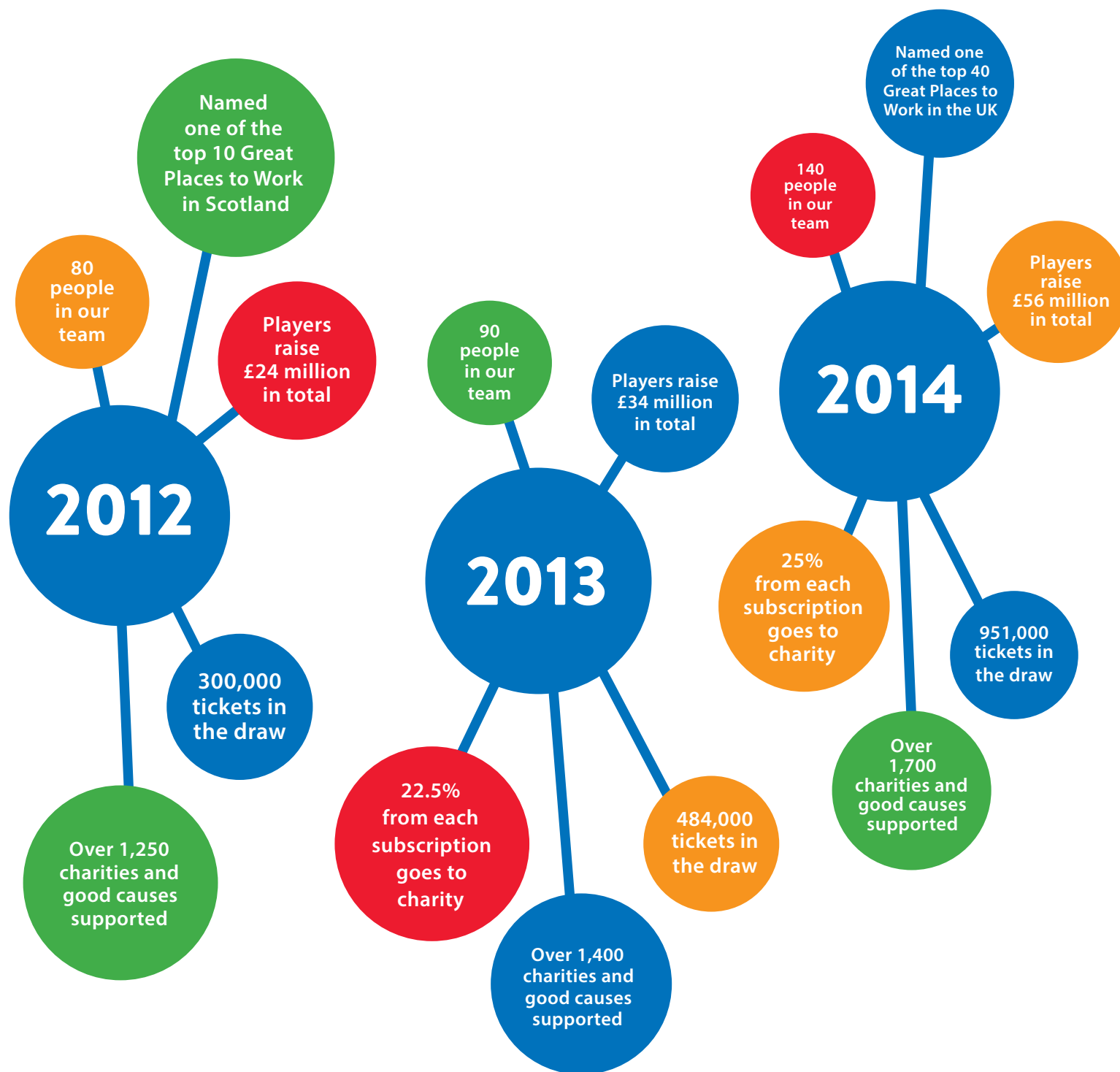
Our Journey

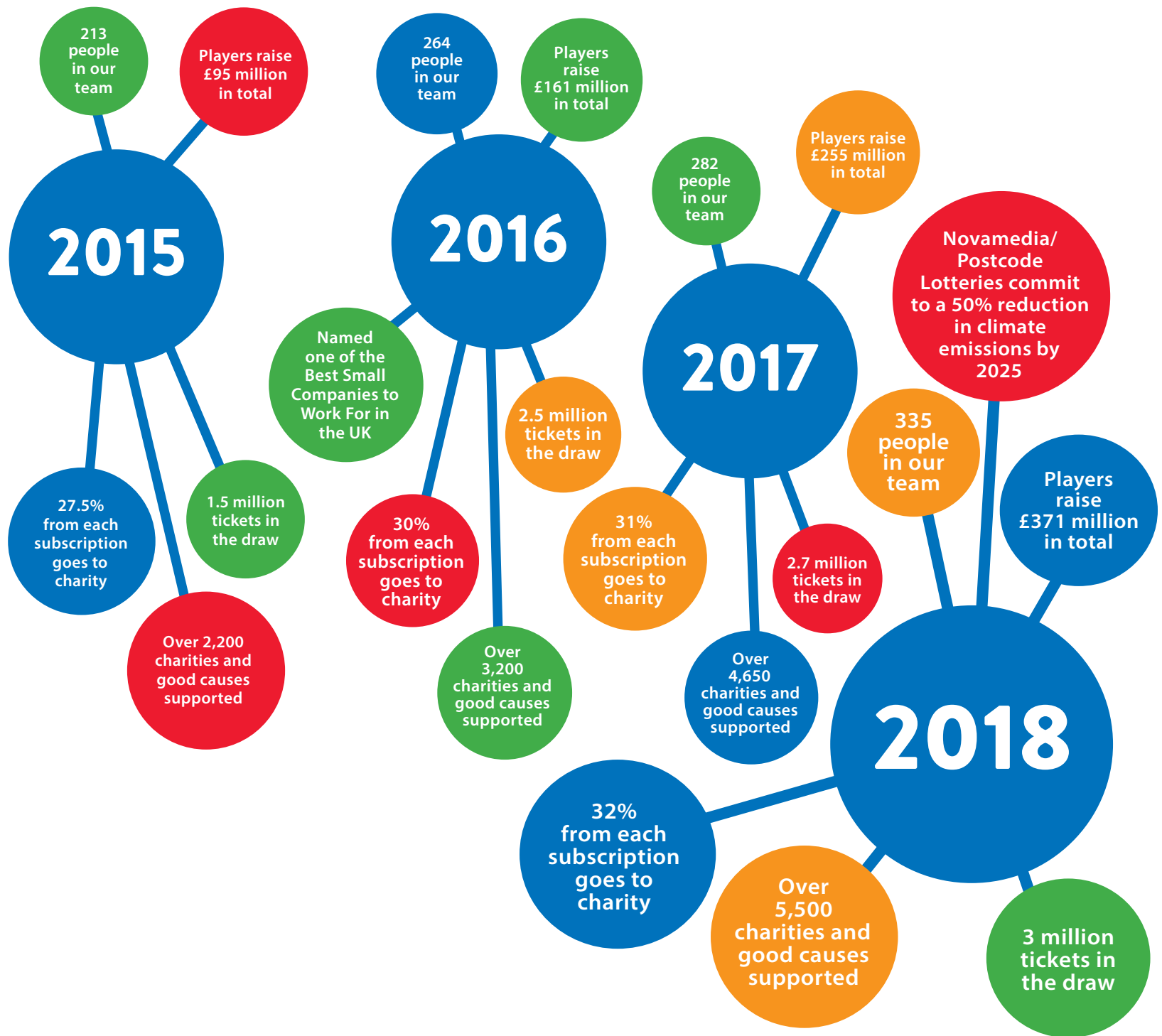
People's Postcode Lottery started as a small pilot project 13 years ago. By playing, millions of players across Britain have raised hundreds of millions of pounds for thousands of charities and good causes. It has been quite a journey.





2009–2011





Supporting Charities and Enabling Change

From large international charities to local community projects, players of People's Postcode Lottery support over 5,500 charities and good causes. As of January 2018, a minimum of 32% of each ticket sale goes to good causes.

The majority of funding raised, thanks to players, is unrestricted, flexible and long term. This approach fosters collaboration, not competition and has been the principle applied to funds raised by players and the charities and good causes that players support.

A long term funding commitment means that charities and good causes can count on a predictable income, allowing them to focus on planning, delivering and developing invaluable services. We understand the value and benefits that unrestricted funding brings. This means charities and good causes can use the money where it is needed most and in areas where it will have the biggest possible impact.

From tackling poverty, empowering women and protecting our oceans, to providing services for people with cancer and animal welfare, the charities and good causes that players of People's Postcode Lottery support are helping to make a difference in Britain and beyond.

Charities and good causes supported by players

CHARITY	AMOUNT (£)
Postcode African Trust	
Action Against Hunger	250,000
AfriKids	500,000
Amref Health Africa UK	250,000
Book Aid International	500,000
Mary's Meals	500,000
Ndlovu Care Group	500,000
Peace Direct	250,000
Postcode Animal Trust	
Battersea	800,000
Marine Conservation Society	600,000
Medical Detection Dogs	250,000
Riding for the Disabled Association	600,000
TRAFFIC	179,408
Wildfowl & Wetlands Trust	600,000
Postcode Care Trust	
Carers Trust	650,000
Missing People	850,000
Music in Hospitals	100,000
Prince of Wales's Charitable Fund	850,000
The Reader	650,000
Postcode Children Trust	
Children 1st	700,000
Children North East	350,000
Daisy Chain	350,000
Girlguiding	350,000
Magic Breakfast	350,000
Place2Be	350,000
Whizz-Kidz	350,000
Postcode Culture Trust	
Edinburgh International Book Festival	375,000
mac birmingham	375,000
National Galleries of Scotland	525,000
National Museum Wales / Amgueddfa Cymru	375,000
National Museums Scotland	375,000
Scottish Book Trust	45,000
Sistema Scotland	375,000

V&A Dundee	375,000
Youth Music	375,000
Postcode Dream Trust	
Missing People	1,000,000
Whizz-Kidz	1,000,000
Postcode Earth Trust	
Forum For The Future	250,000
National Trust	800,000
National Trust for Scotland	125,000
Royal Botanic Garden Edinburgh	450,000
Royal Botanic Gardens, Kew	450,000
Science Museum Group	600,000
WRAP	250,000
Yorkshire Dales Millennium Trust	450,000
Postcode Equality Trust	
Clooney Foundation for Justice	250,000
Helen Bamber Foundation	500,000
Human Rights Watch	800,000
Liberty (Civil Liberties Trust)	450,000
Women for Women International	250,000
Postcode Global Trust	
CARE International	250,000
Child & Youth Finance International	175,000
Humanity & Inclusion UK	250,000
Medecins Sans Frontieres	850,000
Theirworld	650,000
World Association of Girl Guides & Girl Scouts	1,500,000
Postcode Green Trust	
Buglife	250,000
Bumblebee Conservation Trust	96,000
ClientEarth	250,000
Ellen MacArthur Foundation	525,000
Greenpeace	250,000
Keep Britain Tidy	525,000
Plantlife International	200,000
Surfers Against Sewage	100,000
The Conservation Volunteers	525,000
The Royal Parks	750,000

Trees for Cities	100,000
Postcode Heroes Trust	
Apopo	25,000
Dame Kelly Holmes Trust	100,000
Ellen MacArthur Cancer Trust	575,000
Scotland's Charity Air Ambulance	300,000
Street Soccer	300,000
The Sentry	700,000
Thomson Reuters Foundation	400,000
Tottenham Hotspur Foundation	700,000
War Child	250,000
Postcode Innovation Trust	
Business in the Community	85,000
CEIS	9,000
Change Please	65,000
Cyrenians	68,500
Down to Earth	50,000
Micro Rainbow International	125,000
School for Social Entrepreneurs	191,828
Scottish Edge CIC	65,000
Social Enterprise Academy	115,026
Social Investment Scotland	51,625
UK Youth	50,000
UNLTD	205,170
Postcode Planet Trust	
African Parks	950,000
Apopo	700,000
Fauna & Flora International	250,000
Global Witness	350,000
Royal Zoological Society of Scotland	350,000
Zoological Society of London	350,000
Postcode Sport Trust	
Cruyff Foundation	450,000
Greenhouse Sports	450,000
Homeless World Cup	100,000
Lord's Taverners	800,000
Newcastle United Foundation	250,000
Street League	800,000

Postcode Support Trust	
Alzheimer's Society	400,000
Alzheimer Scotland	50,000
Contact The Elderly	450,000
Dementia Adventure	450,000
Grandparents Plus	350,000
Magic Me	39,200
The Food Train	109,100
The Silver Line	700,000
Volunteering Matters	800,000
Promoting Societies	
ActionAid	2,817,142
Amnesty International	2,706,496
Barnardo's	1,027,744
Breast Cancer Care	1,027,744
British Red Cross	1,073,673
Canal & River Trust	2,817,142
Cats Protection	1,027,744
CLIC Sargent	1,946,603
Crisis UK	1,042,729
Depaul UK	2,864,949
Dogs Trust	2,706,496
Friends of the Earth UK	2,706,496
Guide Dogs for the Blind Association	1,042,729
Maggie's	2,864,949
NSPCC	1,042,729
Oxfam GB	1,968,085
PDSA	1,946,603
Plan UK	2,864,949
Royal National Institute of Blind People	1,073,673
Royal Society of Wildlife Trusts	2,817,142
Royal Voluntary Service	2,706,496
Save the Children	2,760,828
Sightsavers	1,073,673
The Ramblers	2,706,496
Unicef	2,864,949
War Child	2,864,949
WaterAid	2,855,624
Woodland Trust	2,864,949
WWF - UK	2,706,496

Postcode Community Trust	
Localgiving	250,000
Street Soccer	25,000
Sporting Equals	20,000
Dimbleby Cancer Care	20,000
Luton All Women's Centre	20,000
Mental Health Action Group Redditch (MHAGR)	20,000
CEDA (Community Equality Disability Action)	20,000
English Folk Dance and Song Society	20,000
Feedback	20,000
Advance Brighter Futures	20,000
Creativity Works Preston	20,000
Special Olympics Great Britain	20,000
Survivors West Yorkshire	20,000
MK Springers Gymnastics Club	20,000
Lincolnshire Integrated Voluntary Emergency Service	20,000
4th Fife (Cardenden)Scout Group	20,000
St Mary's Handbridge Centre	20,000
Home-Start South East Dorset	20,000
Southbank Centre	20,000
CHOICES Islington	20,000
Kaleidoscope Project	20,000
The Clatterbridge Cancer Charity	20,000
Outside Edge Theatre Company	20,000
Art in Hospital	20,000
Oarsome Chance	20,000
West Ham United Foundation	20,000
Dogs for Good	20,000
Starlight Children's Foundation	20,000
Magpas Air Ambulance	20,000
City and Hackney Carers Centre	19,999
Cymdeithas Ty Tawe	19,983
Royal National Institute of Blind People (RNIB)	19,951
Create [Legal name: Create (Arts) limited]	19,884
Volunteering Hebrides	19,861
Changing Pathways	19,800
The Royal Air Forces Association	19,736
Empire Fighting Chance	19,686
The Change Foundation	19,498
South East Dance Limited	19,270

LGS Community Trust	19,256
Institute of Imagination	19,206
Parents Against Child Sexual Exploitation (Pace)	19,200
London Symphony Orchestra	19,050
Community Counselling (North Yorkshire) Limited	18,858
Skylight Circus in Education T/A Skyliight Circus Arts	18,800
Theodora Children's Charity	18,792
Age UK Sunderland	18,621
Herts Disability Sports Foundation	18,590
TAPE	18,500
Key Changes	18,000
1851 Trust	18,000
Homerton Hope	18,000
Royal British Legion Industries	18,000
Coydon BME Forum	18,000
YMCA East Surrey	17,990
Options for Life	17,961
Dundee and Angus ADHD Support Group	17,950
Guide Dogs for the Blind Association	17,877
English National Ballet	17,585
Action for Refugees in Lewisham	17,560
BIGKID Foundation	17,504
Leith Theatre Trust	17,500
Family Care Trust	17,290
Calthorpe Project	17,260
Sensory Trust	17,062
The Ferry Project	17,000
Rape Crisis Tyneside and Northumberland	16,788
Bath and North East Somerset Carers Centre	16,729
Health Action Charity Organisation	16,127
Artworks Creative Communities	15,481
The Welsh Air Ambulance Charitable Trust	15,300
Doncaster Performance Venue Ltd	15,208
CWPLUS	15,000
Manchester Carers Forum	15,000
Artlink Hull	14,994
Bury FC Community Trust	14,660
Kids Inspire	14,300
Fair Shares Gloucestershire	13,700
Church Army	12,833

The Comedy Trust	12,250	Voluntary Action Shetland	7,902	Lighthouses Therapy Services	2,000
Tract and Touch	12,000	LinkAble	7,451	Friends of Ruskin's Brantwood	2,000
EMTEP	12,000	Enable Leisure and Culture	7,375	The Art Clinic Liverpool	2,000
South East London Arts Network	12,000	Inch Park Community Sports Club	7,180	Together Dementia Support CIC	2,000
Trekstock	11,850	Make a Move	7,020	Music for Wellbeing CIC	2,000
Trinity Theatre & Arts Centre	11,500	SPOONS	7,000	Physical impact	2,000
Down Syndrome Training and Support Service Limited	10,937	ConGens	6,915	Community Sports Trust	2,000
Pregnancy & Parents Centre	10,911	Basingstoke & Alton Cardiac Rehabilitation Charity Ltd	6,824	Bexley Mencap	2,000
Sedbergh Youth & Community Centre	10,890	The Works Skatepark Charity	6,700	Brightsparks	2,000
Friends of Eastpines Park	10,888	Welsh National Opera	6,500	Autism & ADHD	2,000
DEBRA	10,519	Compaidd Trust	6,053	Staines Boat Club	2,000
Fallowfield Library & Community Resource Centre	10,250	Simon Community Scotland	6,000	The Women and Girls Lodge Pembrokeshire	2,000
Addenbrooke's Charitable Trust	10,176	Berkshire Cricket Community Foundation	5,900	Liverpool County Football Association	2,000
North Hertfordshire Minority Ethnic Form	10,174	DAZU	5,840	Darlington Table Tennis Academy	2,000
Dial A Ride (Scarborough & District)	10,000	The Estuary League of Friends	5,656	Excelsior Athletic Development Club	2,000
The Asian Sports Foundation	10,000	Cheshire Down's Syndrome Support Group	5,609	Oxford Road Timebank	2,000
Gloucestershire Music Makers T/A The Music Works	10,000	Bay Trust Radio	5,500	Pink Lizard	2,000
Basingstoke Neighbourcare	10,000	Scottish Blind Golf Society	5,360	Rosslyn Bowling Club	2,000
Hinckley Sea Cadets Unit	10,000	Carers United	5,000	Art with Heart	2,000
The Colden Common Shed	10,000	Dover District Volunteering Centre	5,000	Derventio Housing Trust	2,000
Stainforth4All	10,000	Rainbow Valley	5,000	Cheslyn Hay Tennis Club	2,000
MedEquip4Kids	10,000	Tamworth In The Community	4,990	Creative Academies Limited	2,000
Balloons	10,000	Royal Society of Sculptors	4,843	the Voice cLOUD C.I.C.	2,000
Marginal CIO	10,000	The Harbour	4,800	Colwyn Bay Watersports	2,000
Focus Birmingham	9,950	Better Days	4,550	Aldershot Amateur Boxing Club	2,000
West Anglia Crossroads Caring for Carers	9,506	Scartho Community Hub	4,520	Radcliffe Cricket Club	2,000
Dorset Children's Foundation	9,500	MS Therapy Centre (NW)	4,500	England Touch Association	2,000
Booth Centre	9,250	Cotswold Friends	4,500	St Martins School	2,000
Open Country	9,150	Park Farm ACYP Centre	4,460	VOCAB	2,000
Aston Villa Foundation	9,150	Head2Head Theatre	4,354	Feckenham Cricket Club	2,000
DangerPoint Ltd	9,150	One to One Project	4,120	Great Horton Church Cricket Club	2,000
Families United (Warrington)	9,000	Headway Thames Valley	3,099	Dementia Friendly Alton	2,000
Bangladeshi Parents Association in Newham	8,990	Reading Association for the Blind	2,778	Origami Pulse CIC	2,000
Musical Connections	8,984	Bradbury Fields - services for blind and partially sighted people	2,750	Company of Dreams Ltd	2,000
Teapot Trust	8,982	The Lowry Centre Trust	2,500	Dignity in Dementia CIC	2,000
CMT United Kingdom	8,976	Royal Scottish National Orchestra	2,424	Sow the City	2,000
Huddersfield Contemporary Music Festival	8,518	Comics Youth CIC	2,000	Staran Community Interest Company	2,000
Stockport County Community Foundation	8,320	City of Hull Sports and Community Group	2,000	Leeds Bosom Buddies	2,000
Compass Disability Services	8,062	Causeway Irish Housing Association	2,000	Friends of Stour Connect	2,000
The OLLIE Foundation	7,980			Common and Kind	2,000

Release Counselling & Therapy for Women	2,000
Cinema connecting coomunity	2,000
Morecambe Camera Club	2,000
BDS Training	2,000
Kirksanton Village Hall	2,000
Association of Mindfulness Arts CIC	2,000
Richmond Brass Band	2,000
Clayton-Le-Moors Harriers (Junior Section)	2,000
Spring into Action	2,000
Soccer4All Youth FC	2,000
Think2Speak	2,000
York Minxters Roller Derby	2,000
This is me counselling and psychotherapy CIC	2,000
Bentley House Tenants and Residents Association (TARA)	1,999
live cancer free ltd	1,998
Gaming Potion	1,986
East Morton Community Shop	1,975
Lozells Strikers	1,955
P.A.L.A.C.E	1,935
BondedThruCancer	1,900
Airedale Boxing Club	1,896
Ghetto Lincs CIC	1,890
Linskill and North Tyneside Community Development Trust	1,860
Friends of Devonshire Park	1,850
ActiveSouthend	1,800
Melton Mowbray RFC	1,800
Amina Khayyam Dance Company	1,800
Cheadle and District Associated Swimming Club	1,800
Darnall Well Being Centre ltd.	1,788
Healthiness Ltd	1,774
Healthy Lifestyle Solutions CIC	1,730
Club Soda	1,650
Nigerian Community Association Aylesbury CIC	1,600
Braunston Cricket Club	1,500
Festival of Thrift	1,500
Freedom Leisure	1,500
TenFifty	1,500
Open Trail	1,400

Glossop Arts Project	1,020
Plymouth Samaritans	1,000
The Welbeloved Club	1,000
Kids Love Clothes	1,000
Belvidere Bowling Club	900
The Partially Sighted Society	800
Eat Well Project	750
One Game One Community - Exeter City Supporters Trust	700
Cwm Community Action Group	600
Abijah Trust	500
Chesterfield & North Derbyshire Tinnitus Support Group	500

People's Postcode Trust	
YMCA Exeter Community Projects	20,000
HARBOUR PLACE DAY CENTRE	20,000
The Challenging Behaviour Foundation (CBF)	20,000
Sharewear Clothing Scheme	20,000
Women's Aid National Federation of England	20,000
One Ark Limited	20,000
Listening Books	20,000
Aspect Living Foundation	20,000
Scottish Book Trust	20,000
Waverley Care	20,000
Moving On Employment Project	20,000
Maggs Day Centre	20,000
Involve Northwest	20,000
Jubilee Community Enterprises	20,000
Torfaen Citizens Advice Bureau	20,000
The Nelson Trust	20,000
The Melting Pot	20,000
Community Integration and Advocacy Centre (CIAC)	20,000
Pompey in the community	20,000
Venture Trust	20,000
SkyWay Charity	20,000
Groundwork MSSTT	20,000
Children Heard and Seen	20,000
East Durham Partnership	20,000
Chichester District Foodbank	20,000

The British Youth Council	20,000
Central England Law Centre Ltd	20,000
Citizens Advice Derbyshire District	20,000
WildHearts Foundation	20,000
MyBnk	20,000
East Sussex Hearing Resource Centre	20,000
G-Force	20,000
Chelsea FC Foundation	20,000
Deafblind Scotland	20,000
HARP, Southend's Homeless Charity	20,000
Ditch the Label	20,000
Age UK East London	20,000
City of Sanctuary Sheffield	20,000
Pete's Dragons	20,000
Swansea Carers Centre	20,000
Tees Valley Women's Centre	20,000
Churches Housing Action Team Ltd (Mid Devon) 'CHAT'	20,000
Hibiscus Initiatives	20,000
Hammersmith & Fulham Law Centre	20,000
Nottinghamshire Womens Aid	20,000
BOUNCE BACK FOUNDATION	20,000
Council of Somali Organisations	19,981
Citizens Advice Doncaster Borough	19,834
Garnsychan Partnership	19,815
Track Academy	19,800
Planning Democracy	19,789
Sophie Hayes Foundation	19,680
Direct Help & Advice (DHA) Ltd	19,675
Versus Arthritis	19,639
The Rio Ferdinand Foundation	19,630
Pontefract Family Centre	19,612
Your Voice Counts	19,555
Luton Culture	19,430
The Young Foundation	19,250
CHOICE in Hackney	19,000
Hybu Ltd	18,890
Level Trust	18,878
Disability Action Yorkshire	18,878
South London Refugee Association	18,850
Essex Youthbuild	18,760

ECPAT UK (Every Child Protected Against Trafficking)	18,694	Doncaster Alcohol Services	13,600	The Rotary Club of Folkestone	7,000
Unseen	18,659	The Parent House	13,367	Age Cymru Ceredigion	6,502
DisabilityStockport	18,499	Oasis Community Partnerships Hobmoor	12,981	Chapter (West Cheshire) Ltd	6,500
Michael Roberts Charitable Trust (MRCT)	18,432	Falcon Support Services EM Ltd	12,964	Action on Elder Abuse	6,480
Signal Film and Media	18,400	wor hoose community project	12,000	Space 2 Be Me	6,400
Ashdown Medway Accommodation Trust	18,374	Heron Corn Mill (Beetham) Ltd	11,900	Avon and Bristol Law Centre	6,240
The Mix Stowmarket	18,292	The Neuromuscular Centre	11,500	Clifton Children's Society (The Centre)	5,936
The Women's Centre Sutton	18,200	St Davids Council for Social Responsibility	11,500	Arts 2 Heal	5,220
Community Drug and Alcohol Recovery Services	18,150	The Zone Youth Project	11,487	MASH (Manchester Action on Street Health)	5,000
Ariel Trust	18,000	Acumen Community Enterprise Development Trust	11,382	Furniture Recycling Project	5,000
Sateda	18,000	Savana	10,808	Oswin Projects	5,000
The Dales Special School	18,000	HACRO	10,700	Two Pennies Money Advice	5,000
Islington Centre for Refugees and Migrants	18,000	One World Foundation Africa	10,566	Viking FM's Cash for Kids	4,960
Barnardo's	17,826	Bromley Somali Community Association	10,000	Muslim Women's Welfare Assoc.	4,299
Venture Arts	17,790	Open Road West Norfolk	10,000	West Sussex Mediation Service	4,000
CARAS (Community Action for Refugees and Asylum Seekers)	17,708	Kids Love Clothes	10,000	Midlothian Foodbank	4,000
Action for Elders Trust	17,000	Community Education Academy of Leadership	10,000	Southend Vineyard Storehouse	3,000
Community Help & Advice Initiative (CHAI)	16,919	Rivers LPC	10,000	Rummage Rescuers CIC	2,000
Welsh Women's Aid	16,461	South East Essex Advocacy for Older People	10,000	The Work People	2,000
Liverpool Community Advice	16,250	CEDE Foundation	10,000	Goram Events CIC	2,000
Just Like Us	16,249	Rebalancing The Outer Estates Foundation	10,000	SPLAT STAFFORDSHIRE CIC	2,000
Pecan	15,500	English4All in Leeds	10,000	Seadream Education CIC	2,000
Foresight (North East Lincolnshire) Limited	15,460	St Mary Gillingham Scout Group	10,000	South Lakeland Mind	2,000
JET Jobs Education & Training	15,450	Watford Shelterd Workshop Limited	10,000	1125 C.I.C	2,000
Bangladesh Youth League	15,365	PAC-UK (was PAC)	10,000	Inclusive Economy Liverpool CIC	2,000
Disability Sheffield Centre for Independent Living	15,000	People and Drugs Ltd	9,964	Pembrokeshire Coastal Forum	2,000
Ryecroft NRC	15,000	Autism Voice Limited	9,872	The Cheltenham Trust	2,000
Central Eltham Youth Project	15,000	Disability North	9,870	Wolverhampton Sickle Cell Care and Social Activity Centre	2,000
Little Gate Farm	15,000	Sandwell African Women Association	9,750	EVIDENCE TO EXIST RESEARCH GROUP C.I.C.	2,000
IPSEA (Independent Parental Special Education Advice)	15,000	Rediscover Church	9,700	A Place in The World C.I.C.	2,000
Immediate Theatre	14,997	Teen Action	9,640	JAYWICK SANDS COMMUNITY FORUM	2,000
DIAL Doncaster	14,927	Friends of Windmill Gardens	9,502	Washington Community Food Project	2,000
The Anchorage Trust	14,924	Bobath Scotland	9,420	No More Taboo CIC	2,000
Open the Door (Charity)	14,654	GlobalGirl Media UK	9,400	Cultivate Cornwall CIC	2,000
Sandwell Advocacy	14,475	Home-Start Flintshire	9,354	Ethnic Enable	2,000
Salmon Youth Centre in Bermondsey	14,400	Beth Shalom Ltd trading as The National Holocaust Centre and Museum	9,000	PIE: Pursuing Individual Excellence	2,000
Shepherds Bush Families Project and Children's Centre	14,063	YMCA South Devon	8,800	Endeavour Woodcrafts CIC	2,000
Friends First	13,758	South Manchester Down's Syndrome Support Group	8,357	Motherhood Plan CIC	2,000
		Union Dance Trust LTD	7,900	Happily CIC	2,000

Equitots Lanarkshire Community Interest Company	2,000	South Downs National Park Trust	20,000	Education Futures Trust	19,398
Veterans Response Ltd	2,000	The Winchester Project (aka The Winch)	20,000	The Garden Classroom (TGC)	19,364
She Can Consultancy	2,000	Sea Watch Foundation	20,000	Whitleigh Community Trust	19,076
Platt Fields Market Garden	2,000	Small Woods Association	20,000	Wild Ground	18,995
Tuffcycle	2,000	Amphibian and Reptile Conservation Trust	20,000	The Earthworks Trust	18,787
HeatonNorris Community Centre	2,000	Groundwork South Trust Ltd	20,000	Fairfield Environment Trust	18,550
Southend Pride	2,000	British Trust for Ornithology (BTO)	20,000	Youth Options	18,300
On the Out CIC	1,998	Portreath Improvements Committee	20,000	The Beauchamp Lodge Settlement	18,000
Enfield Judo Club	1,990	Tipton St John Playing Field Association	20,000	Create London	18,000
Pioneer Social Enterprise LTD	1,989	Bolton Memorial Hall	20,000	Crossroads Community Hub Ltd/Ayrshire Food from Ayrshire Folk	17,848
MBC Arts Wellbeing CIC	1,985	Friends of Roundhay Park	20,000	Henshaws Society for Blind People	17,751
Carers Aid Torbay	1,980	North Walsham Play	20,000	Croston Together	17,639
Acorn FC and Soccer Coaching	1,975	Wildwood Trust	20,000	Shabang Inclusive Learning	17,500
Outreachsailing CIC	1,960	Holt Millennium Green Trust	20,000	Tees Rivers Trust	17,488
Silver Owl Network C.I.C	1,860	Vincent Wildlife Trust	20,000	Clarets in the Community LTD (trading as Burnley FC in the Community)	16,925
Deaf Business Academy CIC	1,800	Stroud Valleys Project	20,000	Renfrew YMCA SCIO	16,797
With Insight Education C.I.C.	1,777	Royal Horticultural Society	20,000	Friends of the City of Swansea Botanical Complex	16,628
Bridgend Animal Rescue/Rehoming Centre	1,500	Millfields Inspired	20,000	happytots pre school	16,595
Building Bonds Project	1,500	Groundwork South Tyneside and Newcastle	20,000	Lawrance Park Recreation Ground & Community Association	16,500
Letham Angus Gold Group	1,000	Exeter Royal Academy for Deaf Education	20,000	The Heart of England Forest	16,465
Pestalozzi International Village Trust	750	Inside Out	20,000	Easington Lane Community Access Point	16,428
Student Volunteering Cardiff (SVC)	748	AppleCast Limited	19,997	Blackburn with Darwen Healthy Living	16,423
Bradford LGB&T Strategic Partnership	583	Global Generation	19,990	Redbridge Forum	16,179
Postcode Local Trust		South East Rivers Trust	19,990	Lincs Inspire Limited	16,000
Learning through Landscapes	550,000	Dorothy Parkes Centre	19,985	Stoke Sub Hamdon Sports and Recreation Trust	16,000
The Bulldog Trust Limited	100,000	Manhood Wildlife and Heritage Group (MWHG)	19,985	Harbury Village Hall	15,495
Action for Conservation	25,000	International Tree Foundation (ITF)	19,984	SATRO	15,027
Forest Farm Peace Garden	20,000	The Community of the Many Names of God (Skanda Vale Ashram)	19,977	The Full Circle Food Project	15,000
Felbeck Trust	20,000	The Froglife Trust	19,897	Belville Community Garden Trust	15,000
Noah's Ark Children's Hospice	20,000	Organisation Cetacea	19,874	Hanworth Park Preservation Trust	15,000
Challengers	20,000	Sauchie Community Group	19,860	Museum of East Anglian Life	14,785
St Mark's Church Kennington	20,000	Derwentside Hospice Care Foundation (Willow Burn Hospice)	19,770	Darnhill Festival Association	14,668
St Matthews Big Local Leicester	20,000	RSPB Scotland	19,711	Rosewell Development Trust	14,488
YMCA Fairthorne Group	20,000	The Shared Earth Trust	19,591	North East Autism Society	14,070
Horatio's Garden	20,000	Buckingham Canal Society	19,581	The Brickworks Museum	13,539
Holly Hedge Animal Sanctuary	20,000	Caring for Communities and People	19,527	Hackney City Farm	13,426
Lincolnshire Rivers Trust	20,000	The Centre for Sustainable Healthcare	19,500	Family help and support	13,300
Torbay Coast and Countryside Trust	20,000	Oxford City Farm	19,470	Platform Hull Ltd	12,085
Widcombe Acorns pre-school	20,000	East Riding Voluntary Action Services (ERVAS) Ltd	19,440		
Bangladeshi Women's Association Limited	20,000				

The Green Backyard	12,000	Devon Mammal Group	4,000	Riverside House Stourbridge Ltd	2,000
The Friends of the Whitworth	12,000	Edinburgh Dog and Cat Home	4,000	Chiltern Open Air Museum	2,000
STAR Project	12,000	Seaton Delaval & Holywell Community Association	3,630	Thwing & Octon Parish Council	2,000
Plymouth Tree Partnership	12,000	AVON NAVIGATION TRUST	3,500	Coke Hearth Improvements Group	2,000
Autism Initiatives	11,780	Chinese Community Centre-Birmingham	2,672	Bradford Moor Play And Support Service	2,000
Edlington Hilltop Centre	11,698	REACH CIC	2,000	idle women	2,000
Play Gloucestershire	11,640	Saplings Nature Kindergarten & Forest School cic	2,000	Malvern Library	1,999
Whickham Hermitage Community Garden	11,567	Friends of Holbeach Parks	2,000	The Friendly Bench	1,997
Groundwork North Wales	11,471	Ebony and Ivory Community Organisation	2,000	NatureEd C.I.C.	1,991
The Yard	11,040	Tice's Meadow Bird Group	2,000	Nature Vibezzz	1,980
MAIN	10,976	Greenfingers Comunity Project	2,000	Fir Tree Fishery CIC	1,950
Bristol Avon Rivers Trust	10,500	Heart of Hastings Community Land Trust Limited	2,000	Friends of Brierdene	1,826
Cultivate London Limited	10,412	Friends of Morpeth Floral Clock	2,000	Mindful Mosaics	1,812
Huntly ASDitude	10,171	Bathgate Community Council	2,000	East Kilbride Flower Club	1,800
Hopton School House	10,000	Play Learning Life	2,000	Nunny's Farm CIC	1,790
Friends of Derby Arboretum	10,000	Stretford in Bloom	2,000	Cheltenham Borough Homes	1,788
Severn Valley Railway Charitable Trust	10,000	Brighton & Hove Food Partnership	2,000	Cross Keys Homes	1,762
FOLKESTONE YOUTH PROJECT	10,000	Bioregional Learning Centre	2,000	Canalside Heritage	1,750
Climate and Community	9,950	Christchurch Harbour Ornithological Group	2,000	Stirling Carers Centre	1,750
Sutton Nature Conservation Volunteers	9,650	Coeden Fach CIC	2,000	Cromford Canal & Codnor Park Reservoir Group	1,550
Forest of Marston Vale Trust	9,000	Crowsmill Craft Centre C.I.C.	2,000	Platt and Worsley Garden and Social Group	1,500
Healthy n Happy	8,600	Bedfordshire Geology Group	2,000	Weeley Residents Association	1,500
International Otter Survival Fund	8,000	Friends of Bedwelty Park Society	2,000	The Children and Young People's Gardening Project	1,500
Trinity Community Arts	7,624	Friends of Chaddesden Wood (FoCW)	2,000	Wild About Clifford	1,490
lochcarron community development company	7,532	Bacup Pride	2,000	Ridgehill Big Local Enterprises	1,450
Foreland Fields Charity	7,500	Physical Futures	2,000	Holme St Cuthbert Community Group	1,400
Reach South Sheffield	7,000	Feijoa Project CIC	2,000	Awen Cultural Trust	1,201
The Phoenix Community Resource Hub Ltd	6,450	Battersby Junction Community Association	2,000	Growing Together (Community Gardening) CIC	1,200
Friends of the Lake District	6,165	Footprints On The Moon (Family Centres) Limited	2,000	Howwood Community Council	1,138
Horniman Museum and Gardens	6,000	The Friends of the War Memorial Park	2,000	Friends of Paradise Park	1,000
Riana Development Network	5,955	Friends of Nobles Rest	2,000	Belvidere Village Community Group	800
Howden Civic Society	5,507	HOPE THROUGH MUSIC	2,000	Quarnford Memorial Hall	613
Tooting & District Woodcraft Folk	5,440	Rosehill Community Farm & Garden	2,000	Balchder Bro Dyffryn Ogwen / Dyffryn Ogwen Community Pride	600
Ayresome Community Enterprise	5,430	Donnington Partnership Charitable Trust	2,000	City of Bradford YMCA	583
Breast Cancer Haven, West Midlands	5,360	eyemouth enhancement group	2,000	Scholemoor Beacon CIO	583
Loretto Care	5,350	Hayle Park Nature Reserve Trust	2,000	Tipton St John Community Hall Trust	500
Welcome to our Future	5,000	Highbury Orchard Community	2,000	Cottage Museum	500
The Leukaemia and Intensive Chemotherapy Fund	5,000	Thyme Activities CIC	2,000	Scholemoor Beacon	500
Eskmouth Whitby Scout Group	4,996	Austerfield Study Centre	2,000		
Bradgate Park Trust	4,500	DROITWICH ARTS NETWORK	2,000		

TOTAL **113,887,486**

How Player Support Has Made a Difference



APOPO – Luisa’s Story

Raised to date: £2,875,000

Funds awarded from Postcode Planet Trust

APOPO saves lives by training scent detection rats to find hidden landmines and detect tuberculosis in its early stages.

Luisa Manuel is a mother of 10 living in Quitexe, Angola, who provides for her family through farming. After a long conflict in the area, Luisa and her family struggled to rebuild their lives due to landmines left behind from the war. With no easy or safe way to access fertile land, Luisa struggled to make ends meet, but thanks to APOPO’s work to clear the landmines, Luisa and her family can finally live in safety. Luisa trades with nearby villages, meaning she can feed her family and pay her grandchildren’s school fees. Luisa once again has hope for the future.

Bookbinders – Dean’s Story

Funds awarded: £9,880

Funds awarded from People’s Postcode Trust

Bookbinders is a project run by a small charity in Kent, which aims to improve literacy among disadvantaged adults.

Dean Hyman had been homeless in Canterbury for more than four years when he began attending a Bookbinders’ reading group in 2018. One of the most vocal members of the group, Dean was always keen to view his opinions on the stories and poems under discussion each week. A writer himself, he had begun writing an account of his earlier life in London but his circumstances prevented him completing the project. Attending the reading group renewed Dean’s inspiration for finishing his book, and in the autumn, he was offered a hostel place where he is still living and working with a local writer on adapting his life story for the stage.



Save the Children – Jess’ Story

Raised to date: £7,103,638

Save the Children is a global charity dedicated to making the world a safer, better place for children to grow up.

20-year-old Jess lives in West Yorkshire with her partner, Kyle and their nine-month-old daughter, Stevie-May. After a traumatic birth, Jess was diagnosed with PTSD, and with no childcare support, struggled with having a premature baby. When Jess had trouble finding money for basic items, Save the Children stepped in and helped her buy a new cot for Stevie-May. Having the items she needed made a huge difference to Jess’ wellbeing, removing the pressure and worry of having to purchase expensive items herself. Stevie-May is now sleeping better, and Jess says her daughter loves rolling about in her new cot.

Breast Cancer Care

Raised to date: £1,027,744

Breast Cancer Care exists to provide support and information to those affected by and living with breast cancer, and campaign for better care.

"We were delighted to join the People's Postcode Lottery family in 2018. Already, thanks to players of People's Postcode Lottery, we can provide many more people and their families with expert, caring support every step of the way through breast cancer. Sadly, over 1,000 families a week hear someone they love has been diagnosed with breast cancer, so I can't overstate how great the need is for our support and in turn, how important players' support is. On behalf of each person who is benefitting because of the very kind help from players, I send my heartfelt thanks."

Baroness Delyth Morgan,
Chief Executive of Breast Cancer Care.



Marine Conservation Society

Raised to date: £2,100,000

Funds awarded from Postcode Animal Trust

The Marine Conservation Society is working to ensure our seas are healthy, pollution free and protected.

"MCS inspires people to look after our oceans for generations to come. Over 15,000 people cleaned up UK beaches over one weekend, and we improved the sustainability of seafood in over 300 million meals last year. We couldn't hope to reach this level of engagement without the generous support of players of People's Postcode Lottery."

Sandy Luk,
Chief Executive of the
Marine Conservation Society

Plan International UK

Raised to date: £4,582,762

Plan International UK is advancing children's rights and equality for girls to create a more just world.

"The wonderful support from players of People's Postcode Lottery is pivotal in enabling Plan International UK to deliver our mission, to give every child every chance in life. The flexibility of this funding means players are making a transformational difference in all areas of our work and helping change the lives of even more girls, boys and young people in over 50 countries around the world."

Tanya Barron,
CEO of Plan International UK



Players and Winners

When you play People's Postcode Lottery you are part of a community of people who are having a direct, positive and lasting impact on people and planet.

More than three million players are supporting our heritage, tackling loneliness, helping end youth unemployment, addressing the climate emergency, promoting arts and culture, supporting those living with cancer and their families, protecting endangered species and habitats, fighting for human rights and injustices and bringing water and basic sanitation to some of the world's poorest communities.

Players are making all of this and much, much more possible, while having the chance to win prizes. With People's Postcode Lottery, charities and good causes win and players win.

People play with their postcode for £10 a month per ticket and are automatically entered in to each month's draw. Winning postcodes are announced every day and prizes range from £10 to £30,000, right up to a share of the monthly £3 million Postcode Millions prize.

This year People's Postcode Lottery reported a paid ticket growth of 19% year on year.

The more tickets sold, the more funds are available to charities and good causes. As the lottery has grown, the amount from each ticket going to charity has increased. In 2018, this rose to a minimum of 32%, resulting in an amazing £116.9 million for charity.



A total of 871 Mansfield residents celebrated a cash windfall with a Postcode Millions win.



A Balmacara postcode proved lucky for three winners in June's Street Prize.

Breaking records

2018 saw records being broken and new ones set. Over one million new tickets were acquired over the 12-month period. In June, tickets in the draw topped three million for the first time. Record-breaking sales months were reported in March and October – both exceeding 100,000 new ticket sales.

November was the best performing sales month ever. More than 140,000 tickets were sold for the December draws. This month also saw the highest single sales day ever recorded, with more than 30,000 tickets sold in one day.



In June, nine Eccles neighbours won the biggest shares of the £3 million monthly prize.



It was smiles all round for 419 winners in Kidderminster who shared £3 million in September's Postcode Millions.

A December to remember

December 2018 saw several milestones and exciting firsts for People's Postcode Lottery.

It was the single biggest ever campaign draw month with an incredible £14 million in prizes won and 18.5% of players celebrating a win.

Each day during the December draw period, a postcode was announced as a £30,000 Street Prize winner, which saw players celebrate a cash windfall across Britain, from Falkirk in Scotland to Windsor in England and Llanllechid in Wales.

Thanks to continued growth and increasing player support for thousands of charities and good causes every month, an outstanding £10,736,739 was raised and paid out to charities and good causes.



Christmas came early for two neighbours from Ash when they won £30,000 each in December.



The festive feelgood continued in Swansea when six St Thomas neighbours won £30,000 for each ticket played with.

People's Postcode Lottery Ambassadors

"It's been an absolute pleasure to meet our winners up and down the country this past year. It's thanks to them that so many wonderful charities have received important funding, allowing them to continue their vital work."

Matt Johnson

"I love that players of People's Postcode Lottery continue to support such a variety of good causes, all working to create lasting social change – from small local charities, to those half way across the world."

Jeff Brazier

"I met some fantastic charities supported by players of People's Postcode Lottery in 2018, and I was truly blown away by the inspirational and life-changing work that they are carrying out."

Fiona Phillips

"Whatever door I'm knocking on or bell I'm ringing, meeting our players is wonderful. It's also an opportunity to remind them of the incredible things that charities are achieving each day. And it's all made possible thanks to the money they raise through their continued and growing support."

Judie McCourt

"I've met so many lovely winners throughout my time in the People's Postcode Lottery team and this past year has been no exception. Seeing their reactions when they receive their cheques never fails to bring a smile to my face."

Danyl Johnson



Financial Reporting

Our performance in 2018 (in £1,000)

	Share of total			
	2018		2017	
Total Proceeds	365,327	100.0%	305,885	100.0%
Prizes	146,131	40.0%	122,354	40.0%
Lottery Management Costs	102,291	28%	90,156	29.5%
To beneficiaries	116,904	32%	93,375	30.5%

Beneficiaries	2018	2017
ActionAid	2,817	2,498
Amnesty International	2,706	2,577
Barnardo's	1,027	
Breast Cancer Care	1,027	
British Red Cross	1,073	
Canal & River Trust	2,817	1,718
Cats Protection	1,027	
CLIC Sargent	1,946	2,255
Crisis UK	1,042	
Depaul UK	2,864	2,516
Dogs Trust	2,706	2,451
Friends of the Earth UK	2,706	1,718
Guide Dogs for the Blind Association	1,042	
Maggie's	2,864	2,245
NSPCC	1,042	
Oxfam GB	1,968	2,245
PDSA	1,946	2,273
People's Postcode Trust	2,495	2,313
Plan International UK	2,864	1,718
Postcode African Trust	2,750	2,516
Postcode Animal Trust	2,850	2,810
Postcode Care Trust	3,000	2,876
Postcode Children Trust	2,800	2,734
Postcode Community Trust	2,454	2,876
Postcode Culture Trust	3,195	2,946
Postcode Dream Trust	2,816	2,451
Postcode Earth Trust	3,375	2,734
Postcode Equality Trust	2,250	2,413
Postcode Global Trust	2,175	2,273
Postcode Green Trust	3,075	2,911
Postcode Heroes Trust	3,350	2,810
Postcode Innovation Trust	365	2,489
Postcode Local Trust	2,835	2,772
Postcode Planet Trust	2,950	2,946
Postcode Sport Trust	2,850	2,255
Postcode Support Trust	3,150	2,394
Royal National Institute of Blind People	1,073	
Royal Society of Wildlife Trusts	2,817	2,394
Royal Voluntary Service	2,706	2,543
Save the Children	2,760	2,543
Sightsavers	1,073	
The Ramblers	2,706	2,554
Unicef	2,864	
War Child	2,864	2,432
WaterAid	2,855	2,516
The Woodland Trust	2,864	2,489
WWF - UK	2,706	2,476
Total	116,904	93,375

Postcode Trusts



Promoting Societies



Our Team

Our hard-working team of talented and passionate individuals are essential to our mission. Our team is now 335 strong, with us welcoming 53 new team members in 2018. With a 50/50 split of male and female, both in our senior management team and in the organisation as a whole, we believe that maintaining our overall gender balance and enhancing our diversity is important. This year we produced our first ever Gender Pay Gap report, and the findings will allow us to continue to ensure equality and diversity are a key priority.

13

team members
received five-year
anniversary
Golden Wimple
pins

One

team
member received
a ten-year
anniversary
Golden Wimple
pin

Charity is at the heart of what we do and we encourage our team to get involved with our supported good causes wherever possible. This year, on top of more than 1,000 volunteering hours, 30 team members took part in various charity field trips across the globe, from as close as Glasgow in Scotland, all the way to Malawi in East Africa. The team were able to see first-hand what player funding has enabled charities, such as Volunteering Matters, WWF, and Daisy Chain, to achieve.



Our team is made up of 335 talented individuals.

A small group of team members raised over £11,500 for the children's charity, Children 1st, when they competed with teams across Scotland in 2018's Dragons' Glen competition, a contest where organisations are challenged to create and sell a product to make the biggest profit for the charity. The group wrote, designed and sold People's Postcode Lottery's very own recipe book and took home the trophy for the largest sum made for Children 1st.

2018 saw us seek feedback from across all departments and improve communication throughout the business. We began quarterly Team Talks, where our Managing Directors provide business updates and answer questions from team members in a casual and open setting. We also launched a feedback post box, where team members post their ideas and questions that are answered the following month. Additionally, October

In-house training
courses on wellness
were attended

125 times

External courses
focused on role-
based development
were attended

361 times



In October, individuals from across the business visited player supported charities in Malawi.



June saw our team take part in a scavenger hunt as part of 2018's Team Day.

saw 82% of team members complete the b-heard survey from Best Companies, spanning topics from leadership and personal development to work life and well-being. The results will allow us to continue to ensure People's Postcode Lottery is a great place to work.

In February we hosted our first ever Time to Talk day, where team members were encouraged to discuss their mental health and take part in a range of sessions designed to improve their mental well-being. The well-being of our team members is extremely important to us, and we will continue to offer activities and initiatives that encourage a healthy and positive mind.

Our unique team celebrations are a great opportunity for team members to come together and have fun. In 2018, our annual Team Day saw people from across the business take part in a scavenger hunt across Edinburgh, opening clues that took them to a wide variety of landmarks across the city, as well as to the doorsteps of our supported charities and good causes.

These celebrations were also a great occasion to recognise the people in our team who embody our core values; Fun, Courageous, Sharing and Sustainable. Team members were encouraged to vote for their Core Values Star, with 10 people from across the business receiving recognition during our Team Day festivities.



Our team were encouraged to provide feedback in all areas of the business through quarterly Team Talks.



Our annual Christmas Breakfast brought everyone together to celebrate our successes from the year.

Good Operations

Over a decade ago, we embarked on a journey to raise funds for charities and good causes while increasing awareness of their work.

Since then, funding raised by players of People's Postcode Lottery has been affecting change and transforming lives and communities the world over.

A sustainable approach has been ingrained in all we do since the very beginning – it is one of the core values that sits at heart of People's Postcode Lottery.

During 2018, we listened to our team, suppliers, partners and charities to better develop and build on our corporate sustainability and responsible leadership. This process mapped out our sustainability journey so far and shaped where we want to go next.

Our players support vital conservation projects around the world and we believe People's Postcode Lottery has a responsibility to operate to the highest possible environmental standards. We are committed to reducing our impact on the environment and to achieving a major reduction in our contribution to climate change.

This commitment is reflected in a framework which we call Good Operations. It contains a wide range of policies designed to build a business which is socially and environmentally responsible in everything it does. We intend to lead by example and our ambitions are high – we have set ourselves the goal of halving our greenhouse gas emissions by 2025*.

*From a base year of 2018



“Along with our sister lotteries, People's Postcode Lottery is a force for good in creating real lasting social change and empowering charities, communities and people across the globe. It is our ambition to be an equally strong power for good when it comes to sustainability.”

Clara Govier,
Managing Director,
People's Postcode Lottery

Good Operations is built around five key pillars.



Customer focused campaigning

Our customers are our players. We are committed to engaging our players and potential players in our mission; taking them on our journey; showing them the incredible things that can be achieved by charities and good causes around the world; thanking them for their support.



Maximise positive impacts of funds

Raising funds for good causes is what People's Postcode Lottery is all about. A unique mix of unrestricted, flexible and long term funding, raised thanks to players, allows charities breathing space to step off the fundraising treadmill; build capacity and resilience and focus on growing their services – creating strong social organisations.



Operating with integrity

Doing the right thing and striving to be the best we possibly can be is important to us. People's Postcode Lottery is committed to operating with integrity and transparency across all areas of our business. Our conduct is built around industry best practice and we are dedicated to protecting personal data and ensuring safe and fair lottery participation.



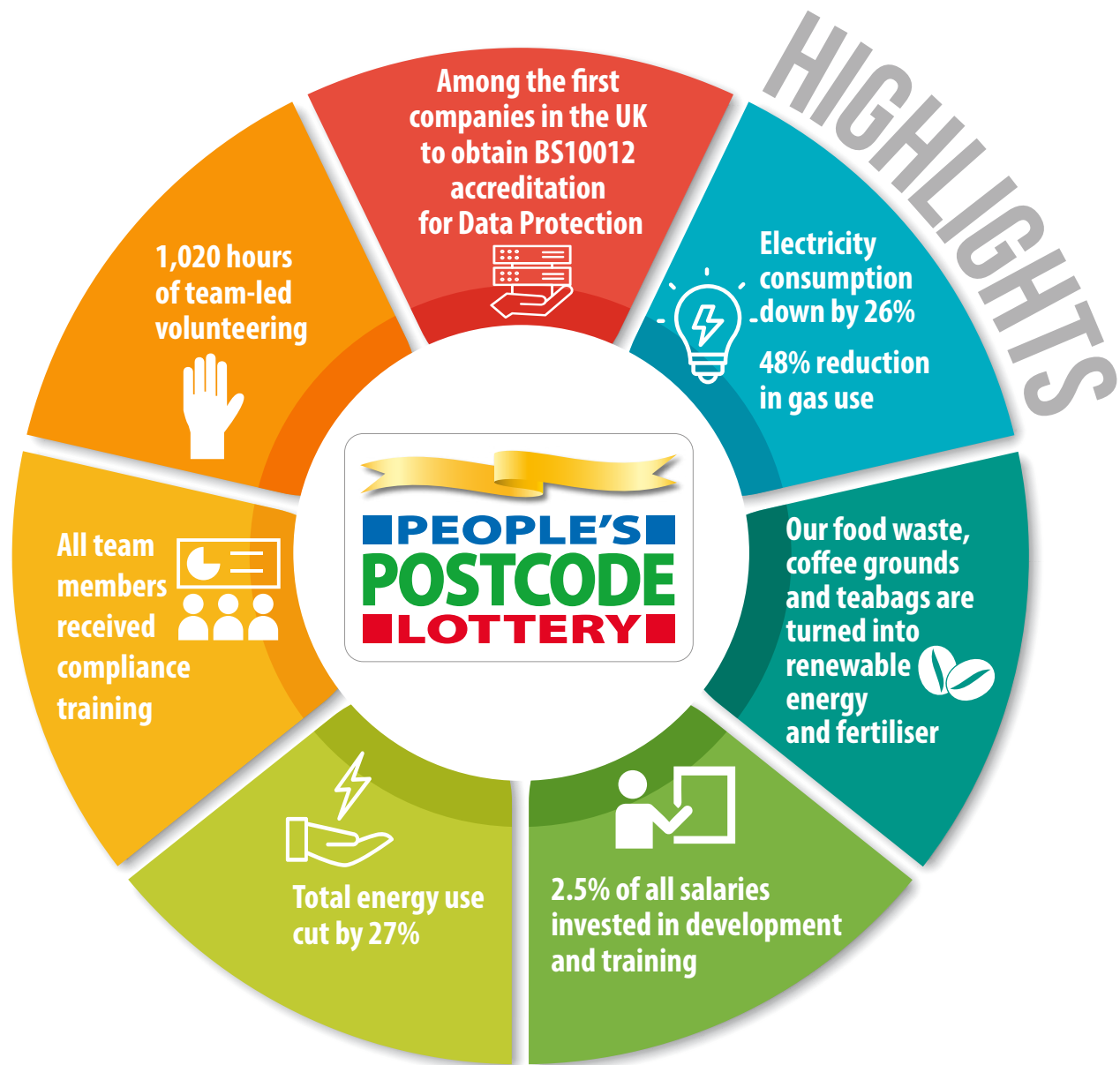
A great place to work and meet

Our people are our greatest strength and are fundamental to our success. With a strong focus on our team's well-being and investing in their development, we create a safe and inspiring working environment where they can be at their best. We are dedicated to maintaining a thriving, equal and respectful environment, one which is guided by our values and continually shaped by our team.



Leadership in responsible value chains

At People's Postcode Lottery, our relationships with our charities, our team and our suppliers are built on trust. We undertake research and detailed analysis to better understand our areas of impact, working closely with our partners and suppliers. Having confidence in our people and our supply and value chains, transparency and fairness and meeting standards through our code of conduct, is core to how we do business and grow.





28 Charlotte Square, Edinburgh, EH2 4ET

Learn more about the charities and good causes supported by players of People's Postcode Lottery at postcodelottery.co.uk